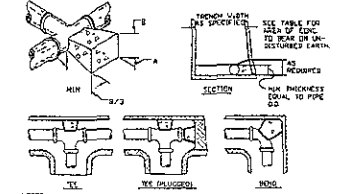


NOTE: COPE SIZE W/ HIGHER STRENGTH NO. 30 GRADING IS EQUAL.

COPE SIZE W/ HIGHER STRENGTH NO. 30 GRADING IS EQUAL	
COPE SIZE	DEPTH
3/4"	10"
1"	12"
1 1/4"	14"
1 1/2"	16"
1 3/4"	18"
2"	20"
2 1/4"	22"
2 1/2"	24"
2 3/4"	26"
3"	28"
3 1/4"	30"
3 1/2"	32"
3 3/4"	34"
4"	36"
4 1/4"	38"
4 1/2"	40"
4 3/4"	42"
5"	44"
5 1/4"	46"
5 1/2"	48"
5 3/4"	50"
6"	52"
6 1/4"	54"
6 1/2"	56"
6 3/4"	58"
7"	60"
7 1/4"	62"
7 1/2"	64"
7 3/4"	66"
8"	68"
8 1/4"	70"
8 1/2"	72"
8 3/4"	74"
9"	76"
9 1/4"	78"
9 1/2"	80"
9 3/4"	82"
10"	84"

NOTES:
 1. PRESSURES SHOWN ABOVE ARE MAXIMUM WORKING PRESSURE IN PSI'S.
 2. TO BE INSTALLED AS CHECK FOR FIBER AT LOCATIONS AS SHOWN ON THE PLANS.
 3. FOR SIMILAR CONDITIONS THRUST BLOCKING MUST BE COMPUTED AND APPROVED.

WATER MAIN VALVE THRUST BLOCK
 NOT TO SCALE

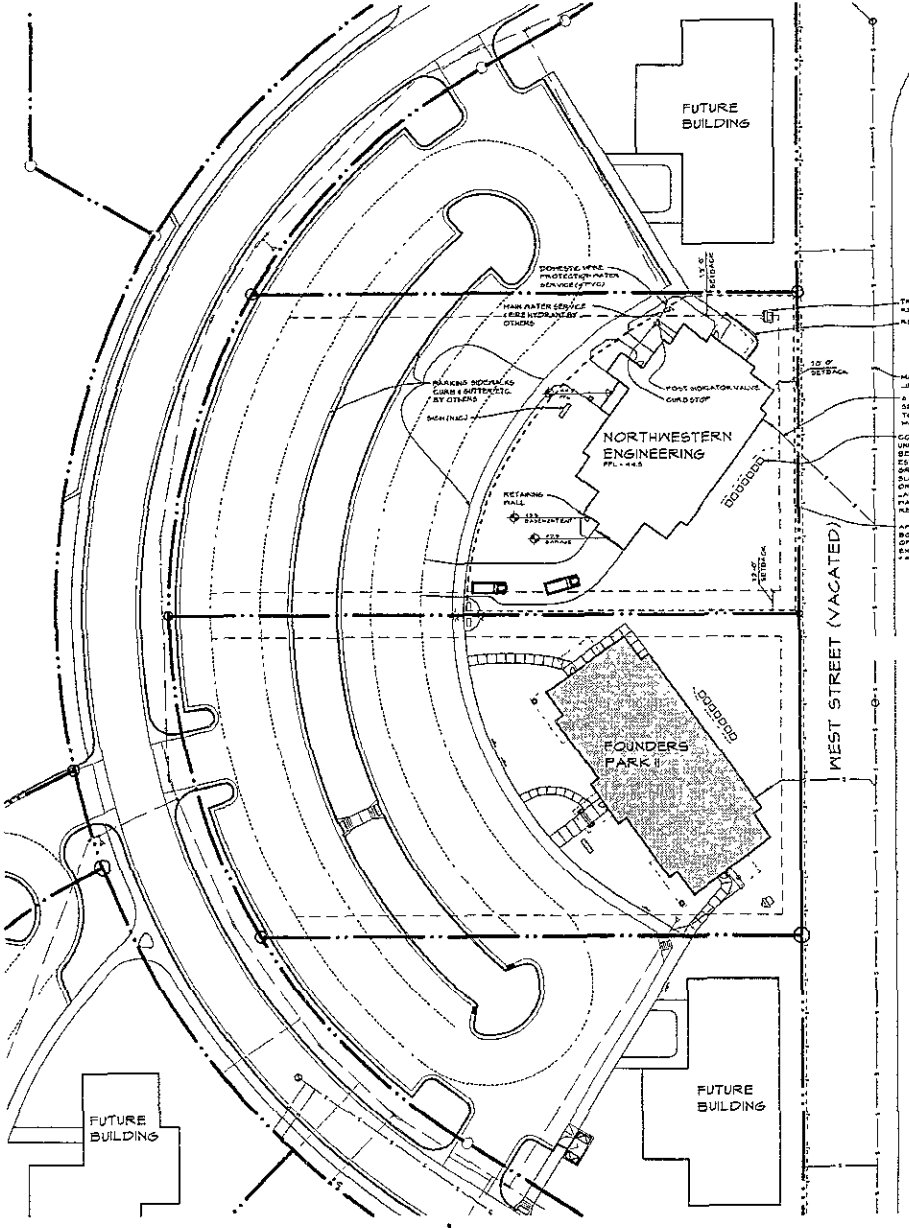


NOTES:
 1. AT BEAR ENDS USE REINFORCING WITH #4 POLYETHYLENE IN 30# SBK BETWEEN CONCRETE AND FITTING.
 2. ALL THRUST BLOCKS SHALL BE 50% COMPRESSIVE STRENGTH OF 4000 PSI 4044 MINIMUM COMPRESSIVE STRENGTH OF 4000 PSI 4044.
 3. THRUST BLOCKS SHALL BE 5% HEAVY REINFORCED DASH FORM SHALL BE USED AS REQUIRED TO OBTAIN ADEQUATE BEARING AREA AND TO CONFINE THE CONCRETE THRUST BLOCKING SHALL BEAR ON THE FITTING ON ONE END AND SHALL NOT BE ALLOWED TO SPILL OVER THE JOINT OR AGAINST THE PIPE.
 4. FOR OTHER CONDITIONS THRUST BLOCKS MUST BE COMPUTED AND APPROVED.

REINFORCEMENT FOR THRUST BLOCKING	
PIPE SIZE	MIN. REINFORCING
12"	2#4 @ 12"
14"	3#4 @ 12"
16"	4#4 @ 12"
18"	5#4 @ 12"
20"	6#4 @ 12"
22"	7#4 @ 12"
24"	8#4 @ 12"
26"	9#4 @ 12"
28"	10#4 @ 12"
30"	11#4 @ 12"
32"	12#4 @ 12"
34"	13#4 @ 12"
36"	14#4 @ 12"
38"	15#4 @ 12"
40"	16#4 @ 12"
42"	17#4 @ 12"
44"	18#4 @ 12"
46"	19#4 @ 12"
48"	20#4 @ 12"
50"	21#4 @ 12"

NOTES:
 THIS TABLE IS BASED ON 150 PSI MAIN PRESSURE 3000 PSI SOI BEARING REQUIREMENTS. FOR OTHER CONDITIONS, THRUST BLOCKS MUST BE COMPUTED AND APPROVED. REINFORCEMENT ALL FITTINGS WITH #4 POLYETHYLENE IN ACCORDANCE WITH AREA CODES.

WATER MAIN FITTINGS THRUST BLOCK DETAIL
 NOT TO SCALE



SITE PLAN
 SCALE 1" = 50'-0"

RECEIVED

AUG 10 2007

Rapid City Growth
 Planning Department

GENERAL NOTES:

1. ALL DIMENSIONS TO CURB & SIDEWALK ARE TO FACE OF CURB OR FACE OF SIDEWALK.
2. GO TO PROVIDE ALL REQUIRED FORM FOR HIGH PILE EQUIPMENT VERIFY WITH MECHANICAL ELECTRICAL DIVISION.
3. GO TO COORDINATE SIGNAL ADJUSTMENTS PER THE SIGNAL REPORT RECOMMENDATIONS.
4. REFER TO ARCHITECTURAL DRAWINGS FOR OVERALL BUILDING DIMENSIONS.
5. PROVIDE CONTROL UNITS AND CONCRETE WALL & 30" OF CONC. MASS FOR 3'-0" WIDE SIDEWALKS & 2'-0" CONC. MASS FOR ASBR MAINLINE CONTROL JOINTS TO BE TIED TO EXISTING MAINLINE JOINTS.
6. WATER MAIN CROSS SLOPE TO DIRECTION OF TRAVEL TO BE IN ACCORDANCE WITH FINISH SLOPE WITH SPOT ELEVATIONS SPECIFIC TO PLANS.
7. GO RESPONSIBLE FOR FINAL GRADING AROUND THE BUILDING AND ANY DISTURBED AREA.
8. SEE MECHANICAL AND ELECTRICAL DRAWINGS FOR UTILITY LOCATIONS & BUILDING.
9. TOPSOIL TO BE PLACED WITHIN THE CONSTRUCTION LIMITS FROM ON SITE STOCKPILE. COORDINATE PLACEMENT & FERTILIZER DEVELOPMENT & IRRIGATION CONTRACTOR (Y OTHERS).
10. COORDINATE ALL PRIVATE UTILITIES WITH SUPPLIERS.

PARKING CALCULATIONS

DETERMINED UNDER PLANNED UNIT DEVELOPMENT PROVIDED BY THE DEVELOPER FOR THE WHOLE COMPLEX.
FOUNDERS PARK II BUILDING
 1ST FLOOR 1,819 SPACES
 2ND FLOOR 1,833 SPACES
 GRAND TOTAL 3,652 SPACES

LANDSCAPE CALCULATIONS

DETERMINED UNDER PLANNED UNIT DEVELOPMENT PROVIDED BY THE DEVELOPER FOR THE WHOLE COMPLEX.
FOUNDERS PARK II BUILDING
 1,833 sq ft EQUIPMENT

WILLIAMS & ASSOCIATES ARCHITECTURE, INC.
 425 E. Colorado Blvd., Suite 2A, Spearfish, South Dakota 57783
 Phone: (605) 642-1007, Fax: (605) 642-1337

Project Title
NORTHWESTERN ENGINEERING COMPANY
 RAPID CITY, SOUTH DAKOTA

pre plot no: 04-44
 date: 8-10-07
 revisions:

sheet ID: 110-2-07
 drawn by: JRR

Sheet Title
SITE PLAN / LANDSCAPE PLAN

Sheet Number
1.10 -