

① FIRST FLOOR DIMENSION PLAN
1/8" = 1'-0"



Project Title
NORTHWESTERN ENGINEERING COMPANY
RAPID CITY, SOUTH DAKOTA

Project no.
610007

Designed by
D2

Checked by
D2

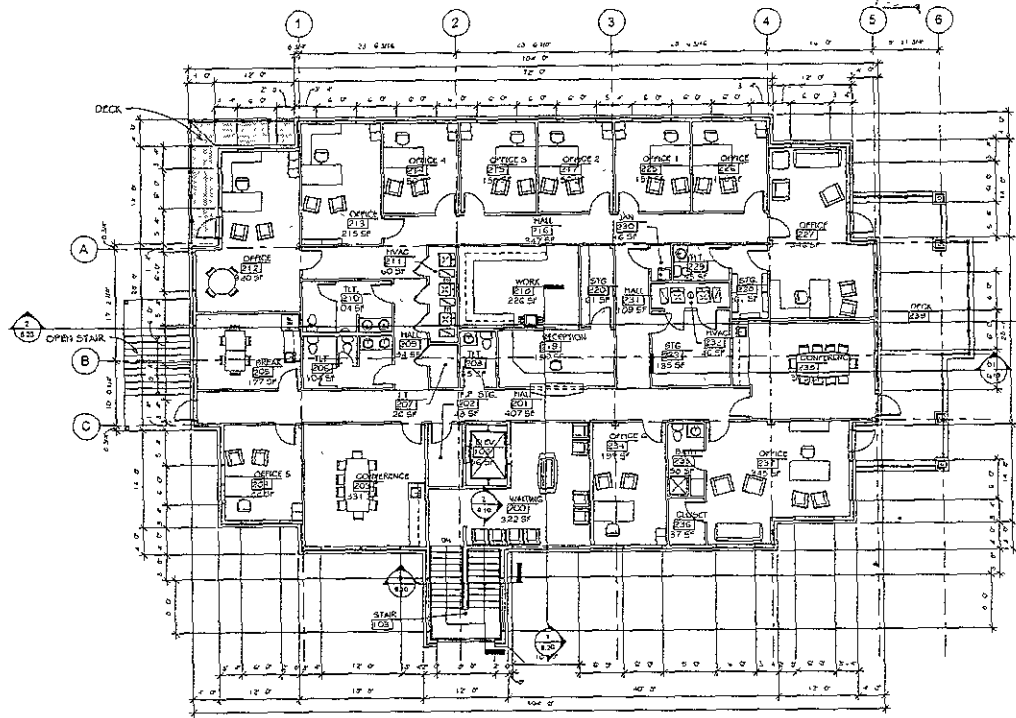
Sheet Number
3 20

Sheet Title
FIRST FLOOR DIMENSION PLAN

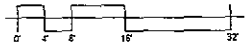
FLOOR

AUG 1 1978

Rapid Construction



1 SECOND FLOOR DIMENSION
1/8" = 1'-0"



**WILLIAMS & ASSOCIATES
ARCHITECTURE, INC.**
125 E. Colfax Blvd. Suite 211 - Steamboat, Small Office - 97761
406-861-1033 FAX 406-861-1034 Fax 406-861-3329

NORTHWESTERN ENGINEERING COMPANY
RAPID CITY, SOUTH DAKOTA

PROJECT TITLE
NORTHWESTERN ENGINEERING COMPANY
RAPID CITY, SOUTH DAKOTA

PROJECT NO. 4442
S.C. 18
D. 10-07
DESIGNED BY
DRAWN BY
CHECKED BY
DATE

SHEET TITLE
SECOND FLOOR
DIMENSION PLAN

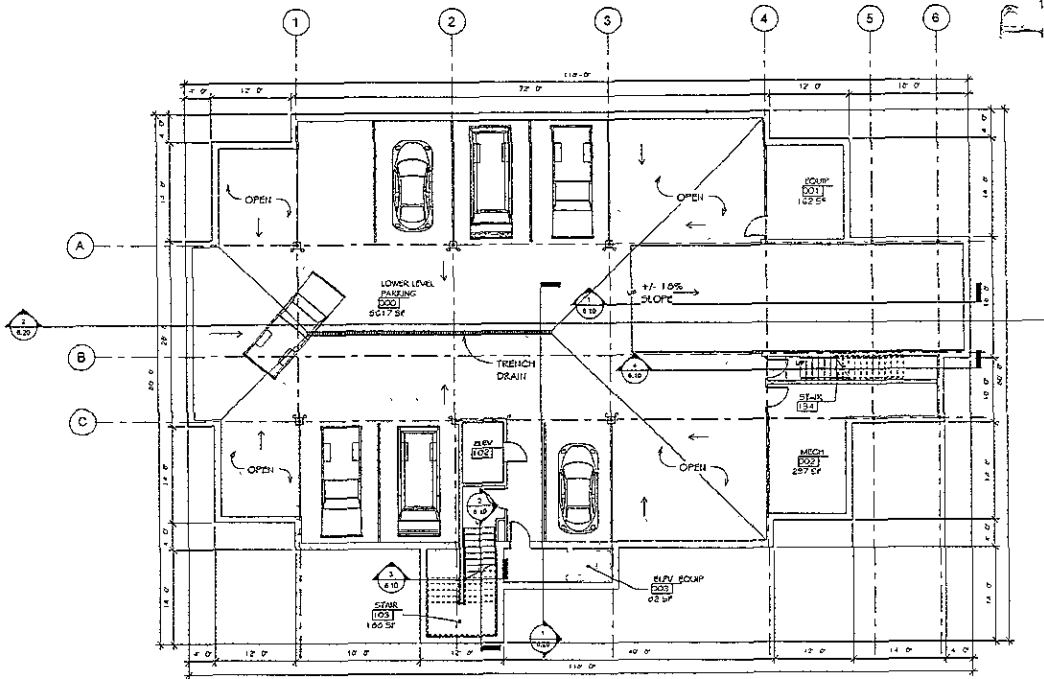
SHEET NUMBER
330

07PD067

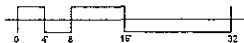
RECEIVED

AUG 10 2007

Rapid City Growth
Management Association



1 BASEMENT DIMENSION PLAN
1/8" = 1'-0"



WILLIAMS & ASSOCIATES
ARCHITECTURE, INC



125 E. Colorado Blvd. Suite 101A, Rapid City, South Dakota 57701
Phone (605) 342-2000 Fax (605) 342-2000 Email info@williamsarch.com

THIS DRAWING IS THE PROPERTY OF WILLIAMS & ASSOCIATES ARCHITECTURE, INC. IT IS TO BE USED ONLY FOR THE PROJECT AND SITE SPECIFICALLY IDENTIFIED HEREON. IT IS NOT TO BE REPRODUCED, COPIED, OR TRANSMITTED IN ANY FORM OR BY ANY MEANS, ELECTRONIC OR MECHANICAL, INCLUDING PHOTOCOPYING, RECORDING, OR BY ANY INFORMATION STORAGE AND RETRIEVAL SYSTEM, WITHOUT THE WRITTEN PERMISSION OF WILLIAMS & ASSOCIATES ARCHITECTURE, INC.

Project Title
NORTHWESTERN ENGINEERING COMPANY

RAPID CITY, SOUTH DAKOTA

Project No.	DC 43
Revision	5-10-07
Designed by	Drawn by
CS	CS

Sheet Title

BASEMENT DIMENSION PLAN

Sheet Number

3.10