

# NEW STEEL STORAGE YARD

LOT 1B OF STARLITE SUBDIVISION,

SECTION 33, T2N, R8E, BHM

PENNINGTON COUNTY, RAPID CITY, SOUTH DAKOTA

PROJECT # 06-0439

CITY OF RAPID CITY  
GROWTH MANAGEMENT DEPT  
DEVELOPMENT SERVICES

Plans are reviewed for general conformances with applicable governmental regulations, codes, orders, ordinances and engineering standards. The City of Rapid City does not make the guarantee, warranty or representation of the plans or design which are the responsibility of the engineer or architect. All necessary permits shall be obtained prior to construction of the proposed public improvements.

\_\_\_\_\_  
COMMENTS

DREAM DESIGN  
INTERNATIONAL, INC.  
PROFESSIONAL STRUCTURAL & CIVIL ENGINEERING CONSULTANTS  
104 KANSAS CITY ST., SUITE 1, RAPID CITY, SD 57701  
PH: 605-348-2558 FAX: 605-348-2558 EMAIL: info@dreamdesigninc.com

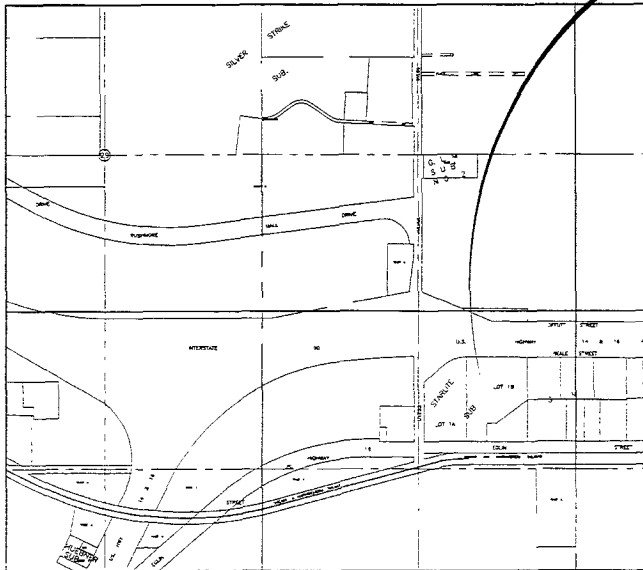


## RECEIVED

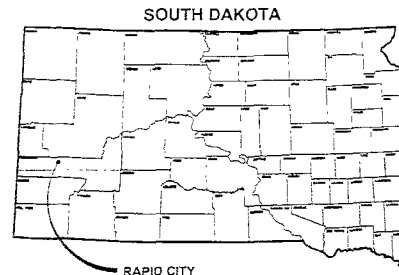
JAN 26 2007

Rapid City Growth  
Management Department

PROJECT  
LOCATION



PROJECT LOCATION MAP NOT TO SCALE



RAPID CITY

### INDEX OF SHEETS

- 1 COVER SHEET
- 2 SITE LOCATION AND CROSS SECTION SHEET
- 3 FENCE DETAIL SHEET

# PRELIMINARY

ONE CALL  
BEFORE DIGGING  
1-800-781-7474

Plan Star Blumber

STARLITE SUBDIVISION  
NEW STEEL STORAGE YARD  
PROJECT # 06-0439