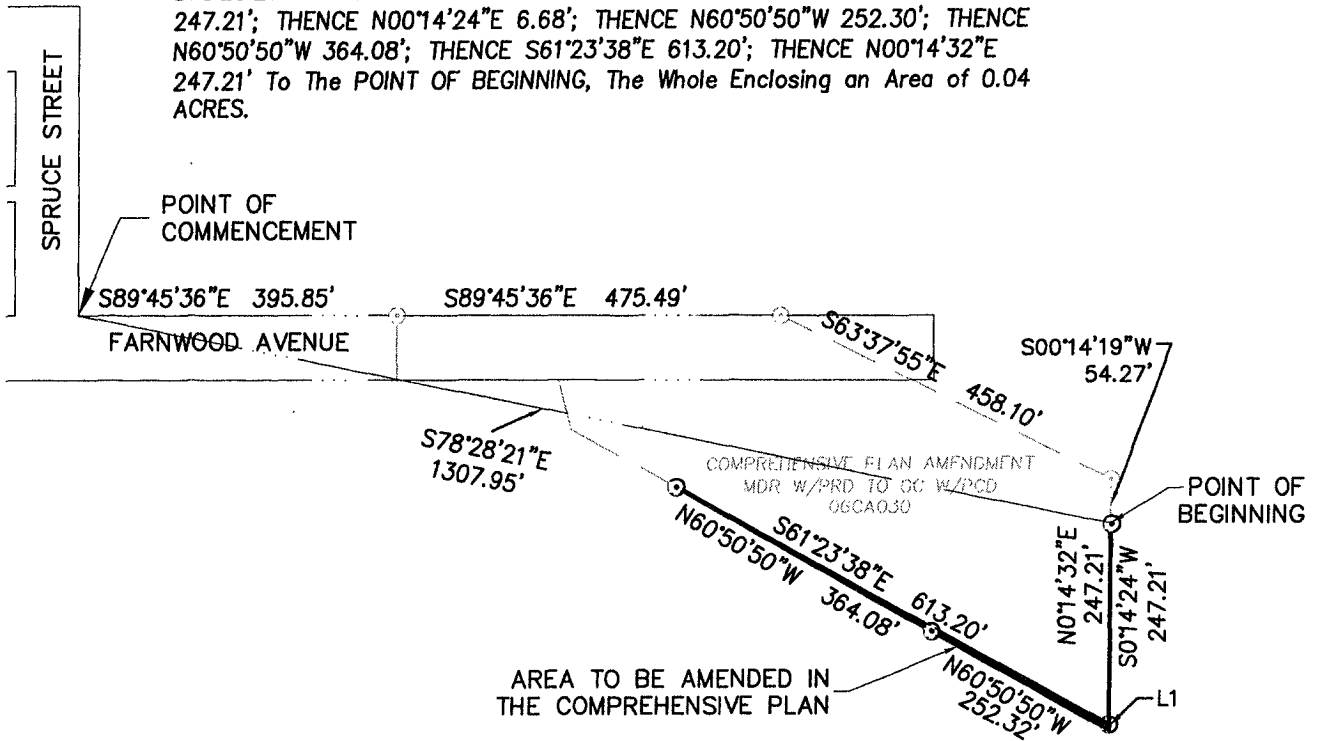


LEGAL DESCRIPTION: Commencing at a Point, Said Point Being the Northeast Corner of the Intersection of Spruce Street and Farnwood Avenue; THENCE S78°28'21"E 1307.95' To The POINT OF BEGINNING. THENCE S0°14'24"W 247.21'; THENCE N00°14'24"E 6.68'; THENCE N60°50'50"W 252.30'; THENCE N60°50'50"W 364.08'; THENCE S61°23'38"E 613.20'; THENCE N00°14'32"E 247.21' To The POINT OF BEGINNING, The Whole Enclosing an Area of 0.04 ACRES.



NUMBER	DIRECTION	DISTANCE
L1	S 00°14'24" W	6.68'

RECEIVED

FEB 28 2007

Rapid City Growth
Management Department

Rushmore Crossing	
NO: 02-0028	REV 1:
DATE: February 23, 2007	REV 2:
DRAWN BY: RDC	REV 3:



D.D.I.
DREAM DESIGN INTERNATIONAL, INC.
 PROFESSIONAL STRUCTURAL & CIVIL ENGINEERING CONSULTANTS
 528 KANSAS CITY ST., SUITE 4, RAPID CITY, SD 57701
 PH. 605-348-0538 FAX. 605-348-0545 EMAIL: engineers@dreamdesigninc.com