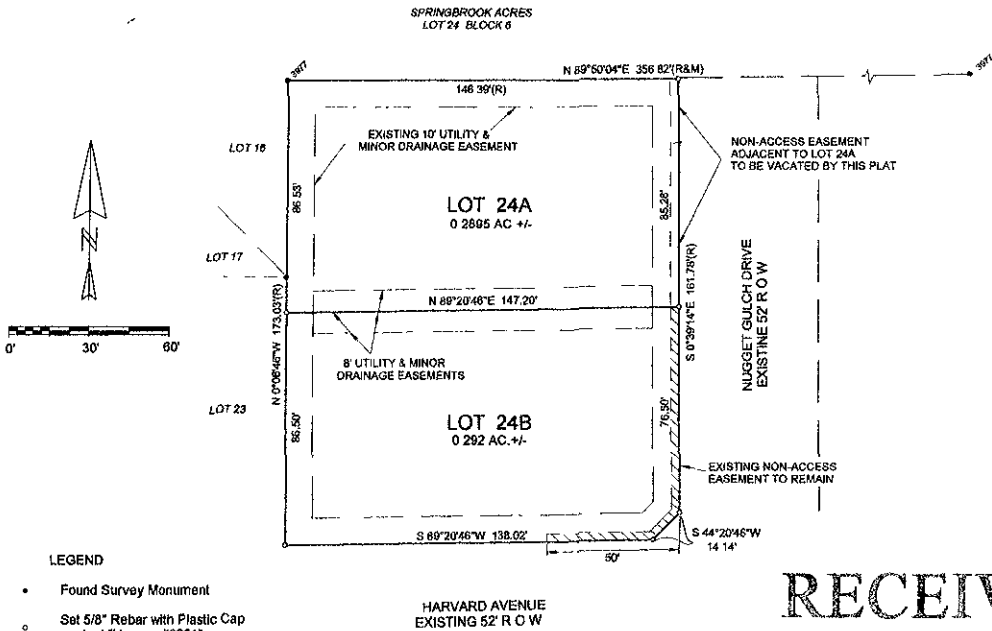


LOTS 24A AND 24B IN BLOCK 3 OF STONEY CREEK SUBDIVISION  
 FORMERLY LOT 24 IN BLOCK 3 OF STONEY CREEK SUBDIVISION  
 LOCATED IN NE1/4 OF THE SW1/4 OF SECTION 22, T1N, R7E, B H M.  
 RAPID CITY, PENNINGTON COUNTY, SOUTH DAKOTA



## LEGEND

- Found Survey Monument
- Set 5/8" Rebar with Plastic Cap marked "Hanson #6251"

Prepared by  
 Hanson Surveying & Mapping  
 832 Horace Mann Drive  
 Rapid City, SD 57701  
 605-398-9652

Dec 20, 2006

RECEIVED

DEC 22 2006

Rapid City Growth  
 Management Department