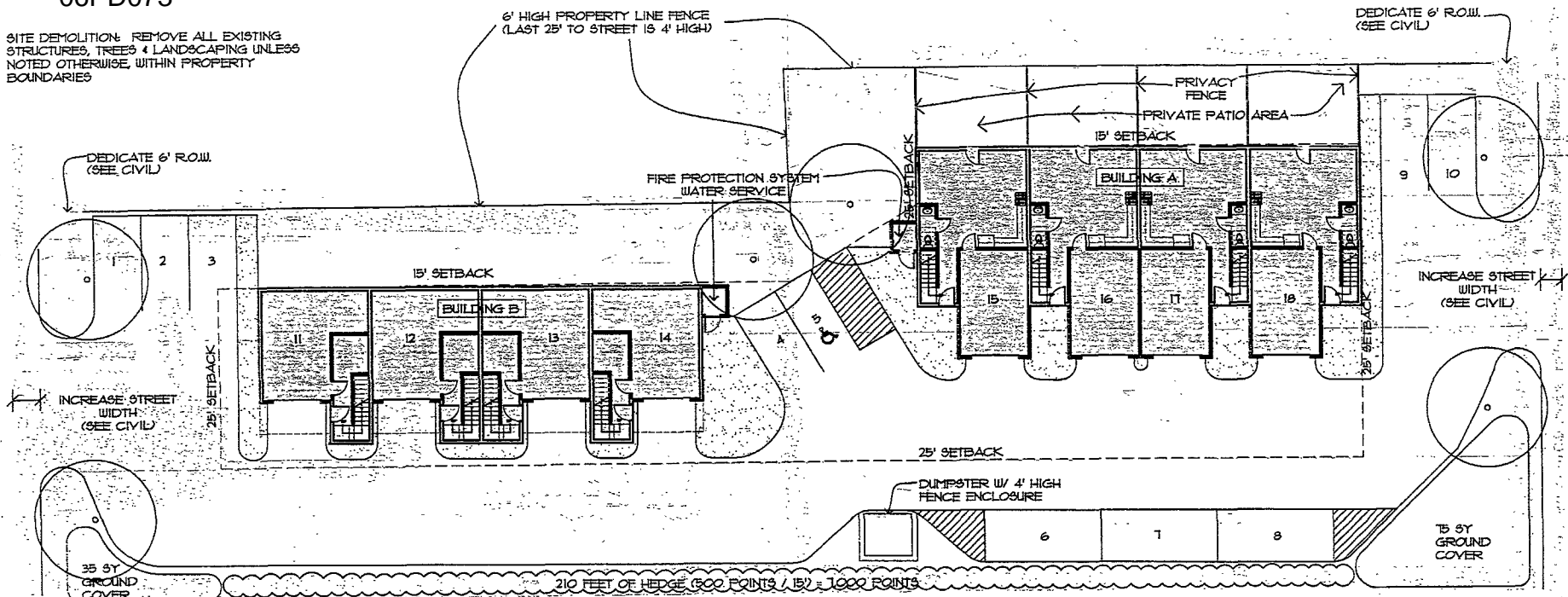


SITE DEMOLITION: REMOVE ALL EXISTING STRUCTURES, TREES & LANDSCAPING UNLESS NOTED OTHERWISE, WITHIN PROPERTY BOUNDARIES



SEE CIVIL SITE PLAN FOR ALL STREET IMPROVEMENTS, PROPERTY LINE SIDEWALKS AND UTILITIES

PARKING REQUIREMENTS:

2 PARKING SPACES PER DWELLING UNIT
PLUS 2 GUEST SPACES = 18 SPACES

PROVIDED:
9 GARAGE SPACES
10 ON SITE SPACES
(1 SPACE IS VAN/HANDICAPPED ACCESSIBLE)

LANDSCAPE REQUIREMENTS:

SITE SIZE = 23,450 S.F.
BUILDING A = (3,025 S.F.)
BUILDING B = (2,125 S.F.)
LANDSCAPING = 18,125 POINTS REQUIRED
210 LIN. FT. OF HEDGE = 7,000 POINTS
6 MEDIUM DECIDUOUS TREES = 6,000 POINTS
110 S.Y. OF GROUND COVER = 11,000 POINTS
250 S.Y. OF GRASS = 2,500 POINTS
TOTAL PROVIDED = 26,500 POINTS

SITE LIGHTING REQUIREMENTS:

THE ELECTRICAL CONTRACTOR SHALL PROVIDE SITE LIGHTING DESIGN AND INSTALLATION IN ACCORDANCE WITH APPROVED SITE PLAN DRAWINGS. ALL LIGHTING IS TO BE WALL MOUNTED FIXTURES AND PLACED TO PROVIDE A MINIMUM OF 1 FOOT CANDLE THROUGH OUT PARKING AREAS AND 3 FOOT CANDLES AT SIDEWALKS AND BUILDING ENTRANCE AREAS. LIGHTING PRODUCT AND LIGHTING DESIGN TO BE APPROVED BY ARCHITECT PRIOR TO INSTALLATION.

REVISIONS

888 773

10/24/11



ARC International Inc.

1845 Clark Street Suite 101
Rapid City, South Dakota 57702
email: ARCHINTERNATIONAL@ARCINTL.COM
tel: 605-341-2888 fax: 605-341-3051

Ronneberg Apartments
Rapid City, South Dakota

PROJECT # 20016 017
DATE 9/19/16
DRAWN BY CO
PROJECTED BY

DRAWING: **Site Plan**