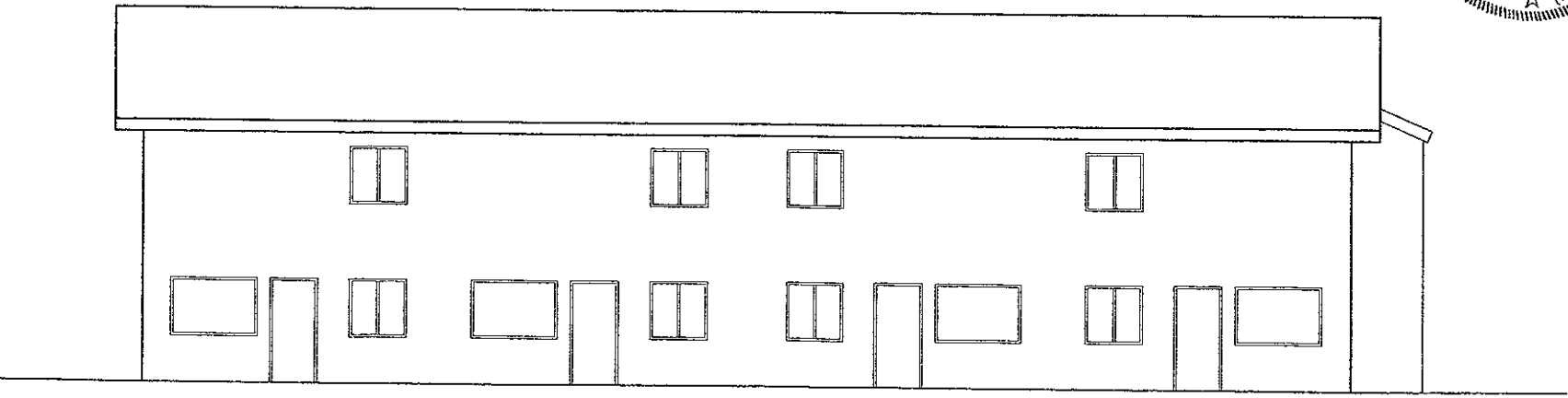
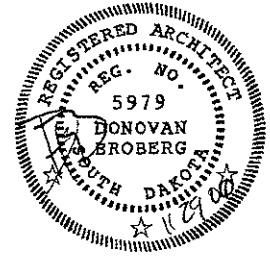


1 SOUTH ELEVATION
A3.3 1/8"=1'-0"



2 NORTH ELEVATION
A3.3 1/8"=1'-0"

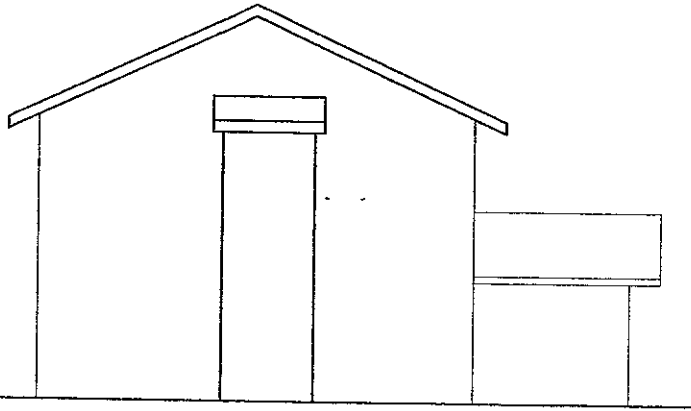
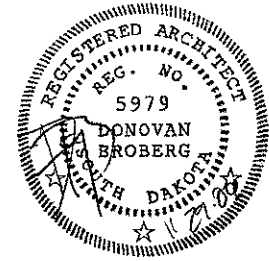
ARC International Inc.
 1855 Clifty Street, Suite 101
 Rapid City, South Dakota 57703
 email: ARCInternational@ARCCFCA.com
 tel: 605-341-2006 fax: 605-341-3881

REGISTERED ARCHITECT
 REG. NO. 5979
 DONOVAN BROBERG
 SOUTH DAKOTA
 11/29/06

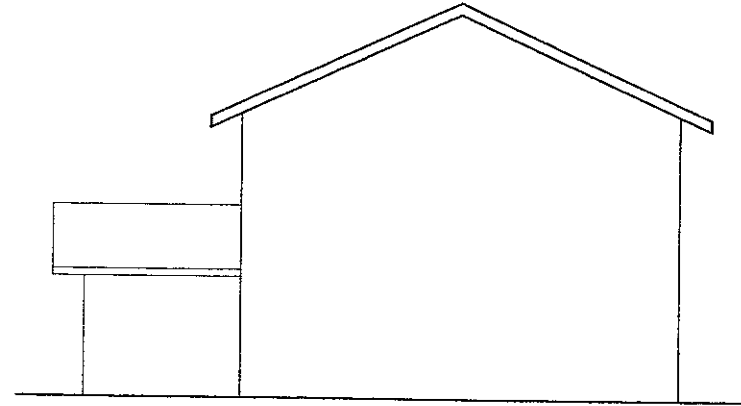
PROJECT: 2006-017
 DATE: 11/29/06
 DRAWN BY: BRW/BK/CS

Ronneberg Apartments
 Rapid City, South Dakota
 ARCHITECT: Ronneberg Builders

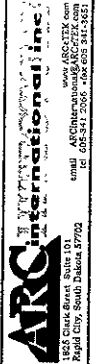
A3.3



1 WEST ELEVATION
A3.4 1/8"=1'-0"



2 EAST ELEVATION
A3.4 1/8"=1'-0"

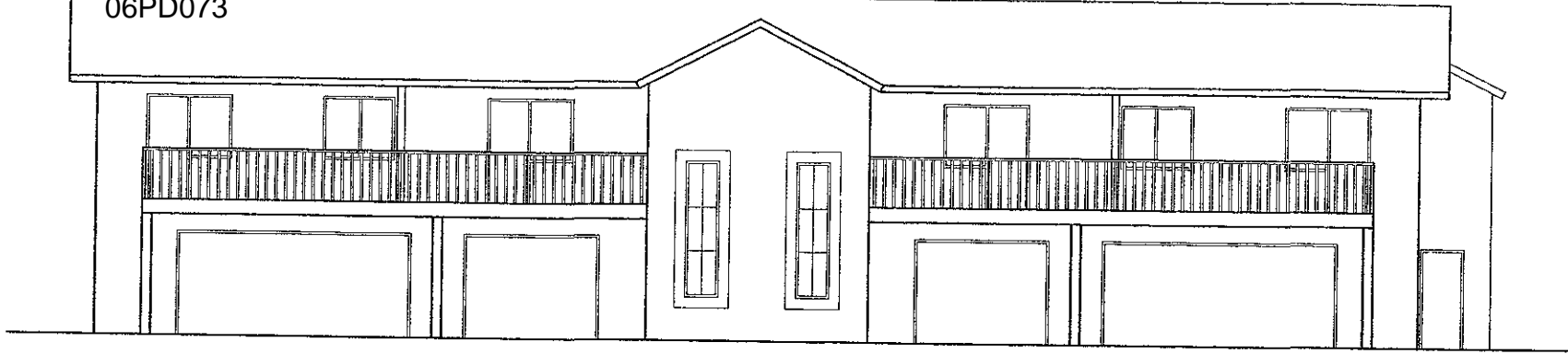


Ronneberg Apartments
Rapid City, South Dakota

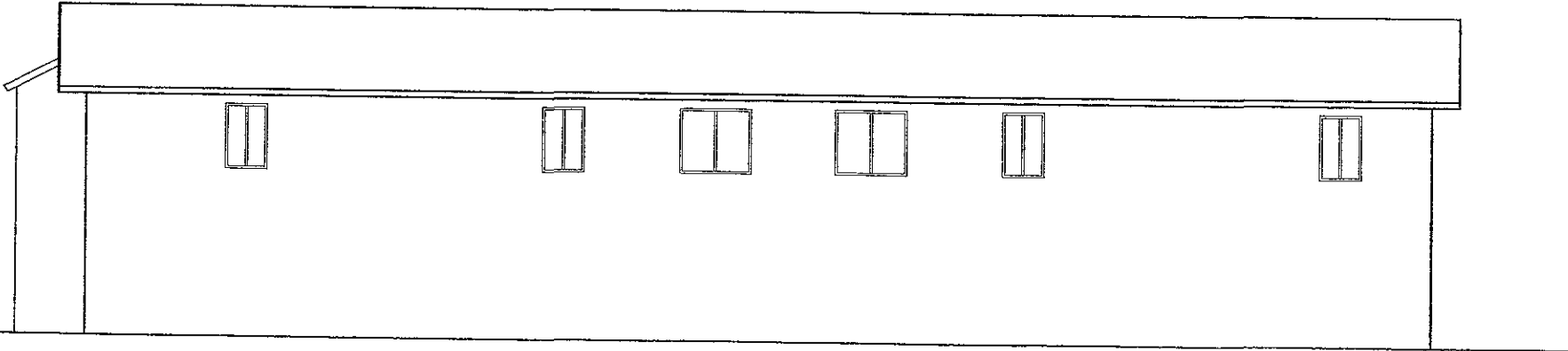
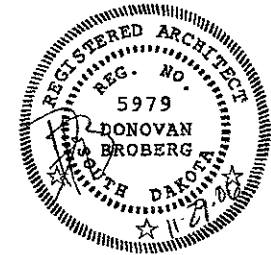
PROJECT: 2006-017
DATE: 11/29/06
SHEET TITLE: ELEVATION
CITY: RACONTERY
STATE: SD

A3.4

06PD073



1 SOUTH ELEVATION
B3.2 1/8"=1'-0"

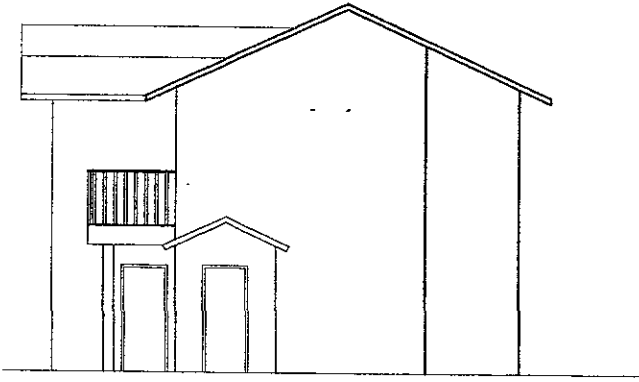
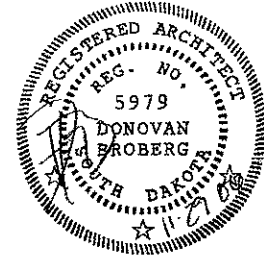


2 NORTH ELEVATION
B3.2 1/8"=1'-0"

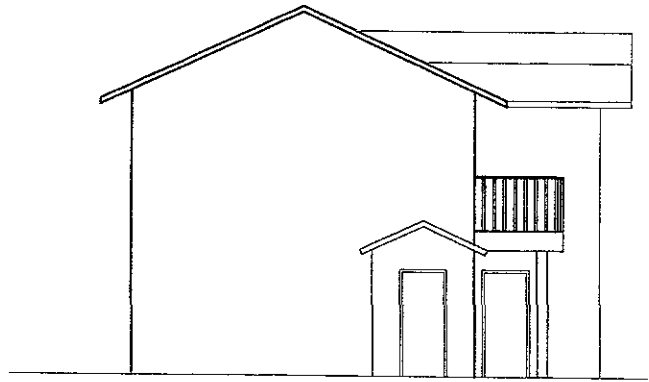
ARC
INTERNATIONAL INC.
www.ARCDESIGN.com
1825 Clark Street, Suite 101
Rapid City, South Dakota 57702
email: ARC@arcintl.com
tel: 605-341-2061 fax: 605-341-3061

Ronneberg Apartments
Rapid City, South Dakota
PROJECT: 2006-017
DATE: 11/29/06
DRAWN BY: CO

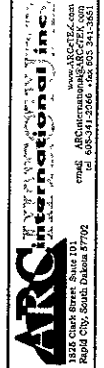
B3.2



1 WEST ELEVATION
B3.3 1/8"=1'-0"



2 EAST ELEVATION
B3.3 1/8"=1'-0"



PROJECT # 2006-017
DATE 1/29/06
DRAWN BY CO.

Ronneberg Apartments
Rapid City, South Dakota
SHEET TITLE
Elevator Elevations

B3.3