

LOTS 8 17 OF BLOCK 5, LOTS 1 8 OF BLOCK 10, LOTS 1 5 OF BLOCK 11, AND DEDICATED PUBLIC RIGHT OF WAY SHOWN AS HUNGER DRIVE & SAGEWOOD STREET, ALL LOCATED IN THE SW1/4 NW1/4 OF SECTION 24, 12N, R1E, B1W4, CITY OF RAPID CITY, PENNINGTON COUNTY, SOUTH DAKOTA

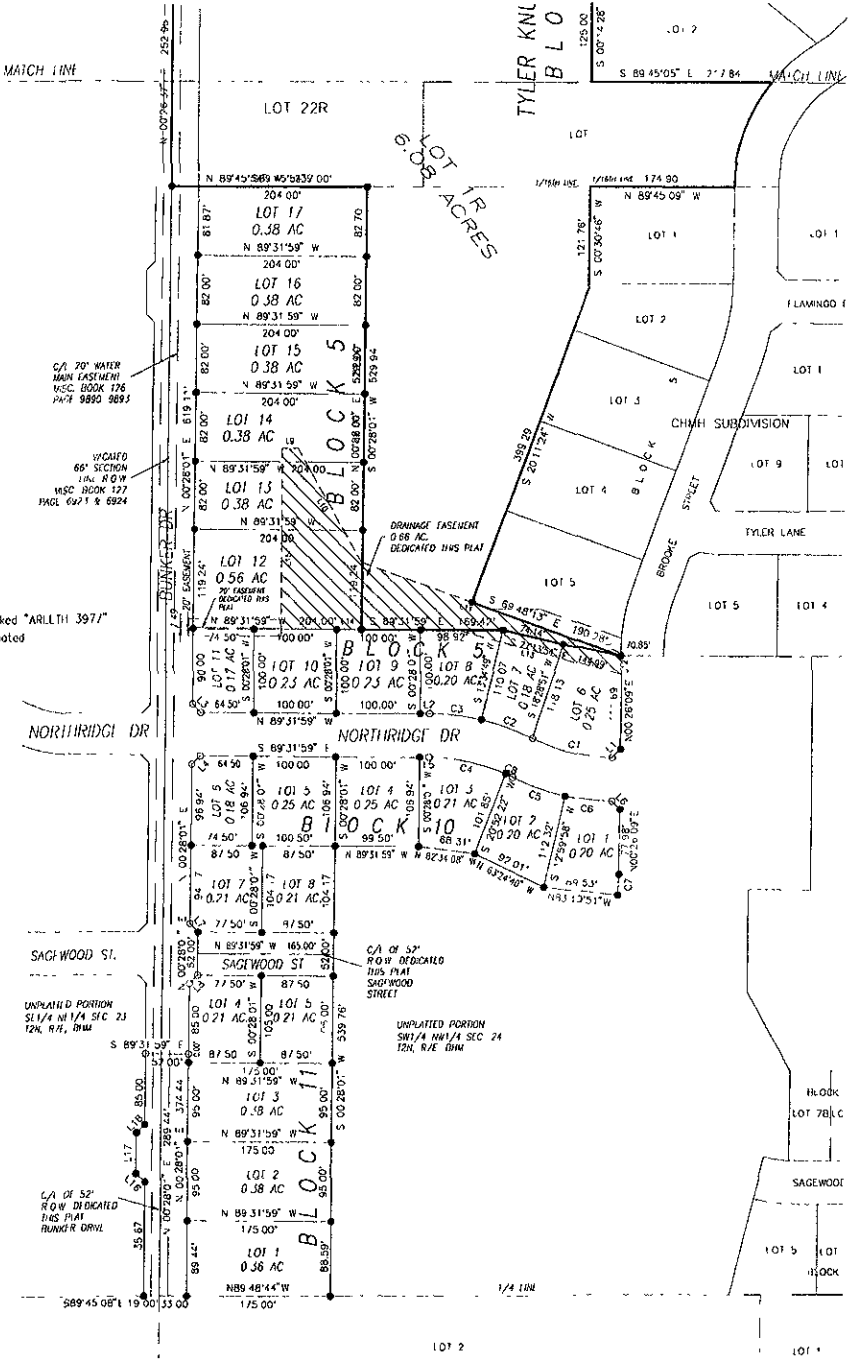
TYLER KNUB SUBDIVISION

LOT 11 AND LOT 22R OF BLOCK 1, FORMERLY LOT 1 AND LOT 22R OF BLOCK 1 OF TYLER KNUB SUBDIVISION, AND THE REMAINDER OF THE UNPLATTED PORTION OF THE SW1/4 NW1/4, ALL LOCATED IN THE NW1/4 NW1/4 AND THE SW1/4 NW1/4 OF SECTION 24, 12N, R1E, B1W4, RAPID CITY, PENNINGTON COUNTY, SOUTH DAKOTA

RECEIVED

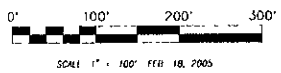
FEB 9 2005

Rapid City Growth Management Department



NOTES

- Denotes set 5/8" rebar with survey cap marked "ARLTH 3971"
- Denotes found Survey Monument w/cap as noted
- ▨▨▨ Denotes Non-Access Easement per this Plat
- ▨▨▨▨ Denotes Drainage Easement per this Plat



| LINE | BLASING | DISTANCE |
|------|---------------|----------|
| L1 | S 85°13'43" W | 14.12 |
| L2 | N 89°31'59" W | 11.97 |
| L3 | N 44°31'59" W | 14.14 |
| L4 | N 45°29'01" E | 14.14 |
| L5 | S 89°31'59" W | 11.13 |
| L6 | N 44°30'01" E | 14.14 |
| L7 | S 44°31'59" W | 14.14 |
| L8 | N 45°29'01" E | 14.14 |
| L9 | N 90°00'00" E | 18.98 |
| L10 | S 29°45'04" E | 156.77 |
| L11 | S 69°41'01" E | 171.09 |
| L12 | S 00°14'28" W | 82.40 |
| L13 | N 70°25'31" W | 202.26 |
| L14 | N 89°31'59" W | 212.00 |
| L15 | N 00°00'00" E | 217.89 |
| L16 | N 44°31'59" W | 14.14 |
| L17 | N 00°00'00" E | 49.00 |
| L18 | N 45°29'01" E | 14.14 |

| CURVE | RADIUS | ARC LENGTH | CHORD LEN | CHORD BEARING |
|-------|--------|------------|-----------|---------------|
| C1 | 224.00 | 89.71 | 98.89 | S 75.45°08" E |
| C2 | 776.00 | 84.64 | 84.49 | S 69.42°56" E |
| C3 | 176.00 | 63.14 | 63.03 | S 87°28'25" E |
| C4 | 274.00 | 104.73 | 102.81 | S 76.16°02" E |
| C5 | 276.00 | 67.44 | 67.27 | S 70°00'02" E |
| C6 | 276.00 | 55.55 | 56.45 | S 87°52'14" E |
| C7 | 736.79 | 271.3 | 271.17 | N 03°31'48" W |
| C7 | 274.00 | 8.93 | 8.93 | S 66°08'55" E |

NOTES

- MINOR DRAINAGE AND UTILITY EASEMENTS ARE HEREBY ESTABLISHED BY WIDE ON THE INTERIOR SIDE OF ALL LOT LINES AND RIGHT-OF-WAY (EXCEPT WHERE MAJOR DRAINAGE EASEMENTS ARE LOCATED)
- ALL INTERIORS SHALL MAINTAIN EXISTING DRAINAGE FACILITIES IN ACCORDANCE TO APPROVED CONSTRUCTION PLANS (RAPID CITY ENG DIV #C-2152ED NOTE)
- ALL ON SITE WASTE WATER DISPOSAL SYSTEMS SHALL BE DESIGNED, INSPECTED AND CERTIFIED BY A PROFESSIONAL ENGINEER
- ADCREAGE SHOWN ON LOTS INCLUDE EASEMENTS
- ALL LOTS SHALL CONNECT TO CITY SANITARY SEWER WITHIN 6 MONTHS OF COMPLETION OF CITY SEWER SERVICE TO THE LOTS. OWNER SHALL ABANDON THE SEWER BANK IN ACCORDANCE WITH STATE AND CITY STANDARDS
- NON ACCESS EASEMENTS ARE HEREBY ESTABLISHED ALONG ALL FIRST FIFTY FEET OF COMMON LOTS OR AS INDICATED HEREON
- ANY MAJOR DRAINAGE EASEMENT SHOWN HEREON SHALL BE KEPT FREE OF ALL OBSTRUCTIONS INCLUDING BUT NOT LIMITED TO BUILDINGS WALLS, FENCES HEDGES, TREES, AND SHRUBS THESE EASEMENTS GRANT TO ALL PUBLIC AUTH PRITIES THE RIGHT TO CONSTRUCT, OPERATE, MAINTAIN, INSPECT AND REPAIR SUCH WORKS AND STRUCTURES AS IT DEEMS EXPEDIENT TO FACILITATE DRAINAGE FROM ANY SOURCE



PREPARED BY: ARLETH & ASSOCIATES

382 MAIN STREET DEADWOOD, SD 57732 605 578 1637

JOB NO

DATE FEB 18 2005 SCALE 1" = 100' DRAWN

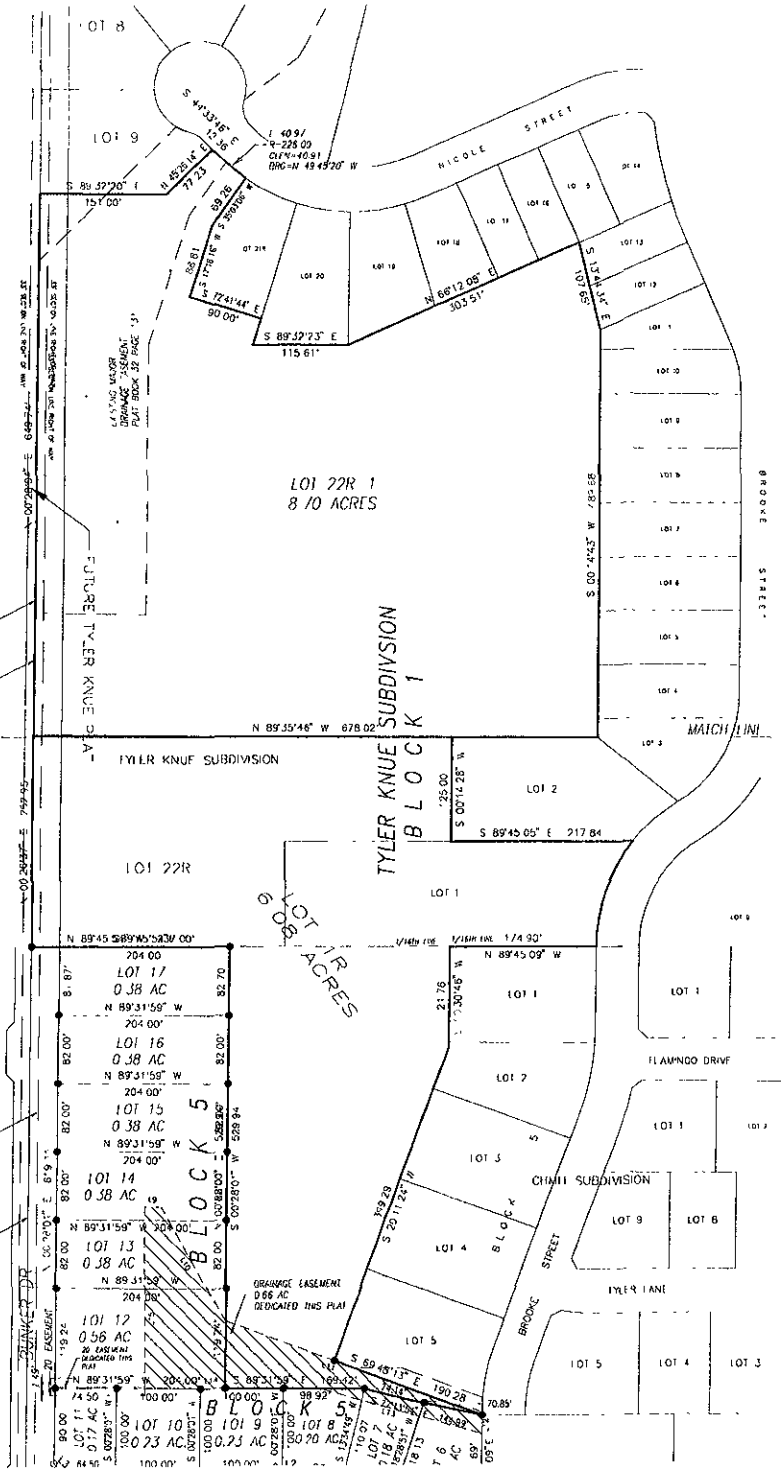
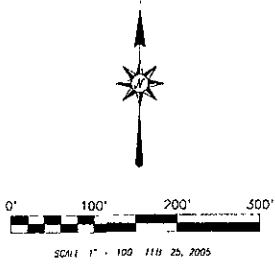
APPROVED BY DWG

Prepared for Dream Design International, Inc 278 Kansas City Street, Suite 4 Rapid City, SD 57101 605-645-1744 engineers@dreamdesigninc.com

1015 6 1/4 OF BLOCK 5, 1015 1 8 OF BLOCK 10, 1015 1 5 OF BLOCK 11, AND DEDICATED PUBLIC RIGHT OF WAY SHOWN AS BUNKER DRIVE & SAGWOOD STREET, ALL LOCATED IN THE SW1/4 NW1/4 OF SECTION 24, 12N, R7E, B11M, CITY OF RAPID CITY, PENNINGTON COUNTY, SOUTH DAKOTA

TYLER KNUF SUBDIVISION

101 1R AND 101 22R-1 OF BLOCK 1, FORMERLY LOT 1 AND LOT 22R OF BLOCK 1 OF TYLER KNUF SUBDIVISION, AND THE REMAINDER OF THE UNPLATTED PORTION OF THE SW1/4NW1/4, ALL LOCATED IN THE NW1/4NW1/4 AND THE SW1/4NW1/4 OF SECTION 24, 12N, R7E, B11M, RAPID CITY, PENNINGTON COUNTY, SOUTH DAKOTA



RECEIVED

FEB 23 2005

Handwritten notes and signatures, including 'Marty'.

W/CHD 56' SECTION 12N R/W MISC BOOK 127 PAGE 6973 & 6924

C/L 20' WATER MAIN EASEMENT MISC BOOK 126 PAGE 9990-9893

W/CHD 66' SECTION 12N R/W MISC BOOK 127 PAGE 6923 & 6924

LOT 1R ACRES

DRAINAGE EASEMENT 0.56 AC DEDICATED THIS PLAT



PREPARED BY: ARLETH & ASSOCIATES

382 MAIN STREET DEADWOOD, SD 57732 605-578 1637

JOB NO

DATE FEB 18, 2005 SCALE 1" = 100' DRAWN TV

APPROVED JMW

DWG. BY: P. R. POZ. PAVING PLUMBING

Prepared for Dream Des gⁿ Internal and, Inc 528 46th Sth City Street, Suite 4 Rapid City, SD 57701 605-645 1774 e-mail: news@dreamdes.com