

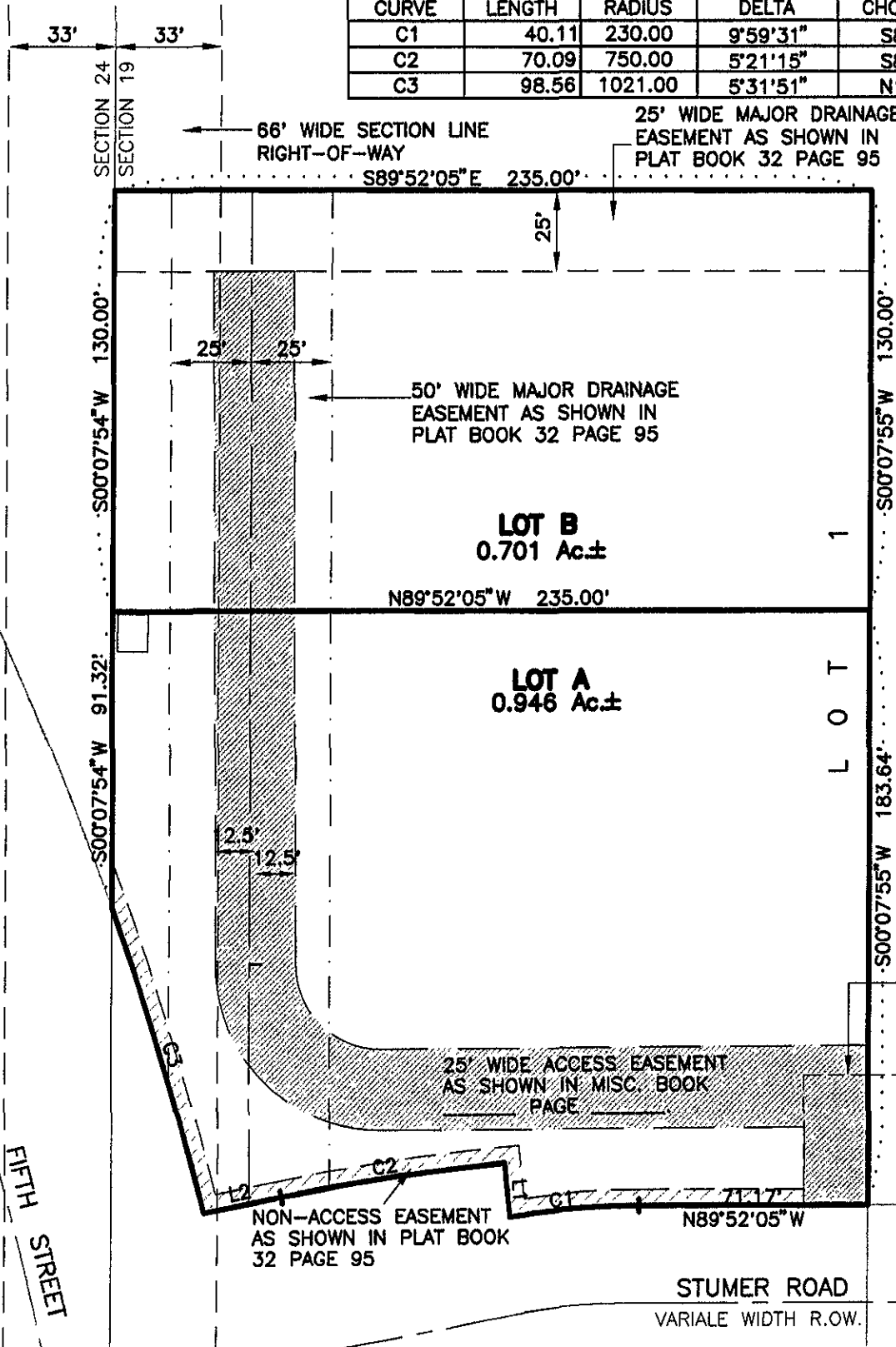
PLAT OF  
**LOTS A AND B OF LOT 1**  
**NORTH 80 SUBDIVISION**

(formerly Lot 1 of North 80 Subdivision)

LOCATED IN "GOVERNMENT" LOT 2 (SW<sup>1</sup>/<sub>4</sub> OF THE NW<sup>1</sup>/<sub>4</sub>)  
 SECTION 19, T1N, R8E, BHM,  
 RAPID CITY, PENNINGTON COUNTY, SOUTH DAKOTA

LINE	LENGTH	BEARING
L1	16.87	N05°44'30"W
L2	24.70	S78°54'16"W

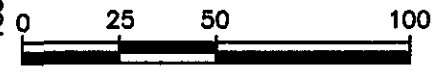
CURVE	LENGTH	RADIUS	DELTA	CHORD BEARING	CHORD DISTANCE
C1	40.11	230.00	9°59'31"	S85°08'09"W	40.06
C2	70.09	750.00	5°21'15"	S81°34'53"W	70.06
C3	98.56	1021.00	5°31'51"	N16°47'47"W	98.52



"GOVERNMENT" LOT 2



FEBRUARY 18, 2005



SCALE: 1" = 50'

SHARED ACCESS EASEMENT AS SHOWN IN PLAT BOOK 32 PAGE 95

SHARED ACCESS EASEMENT AS SHOWN IN MISC. BOOK PAGE \_\_\_\_\_

RECEIVED

STUMER ROAD

VARIABLE WIDTH R.O.W.

FIFTH STREET