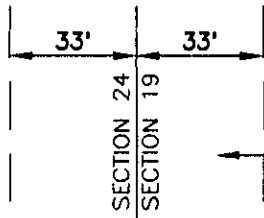


25' WIDE ACCESS EASEMENT

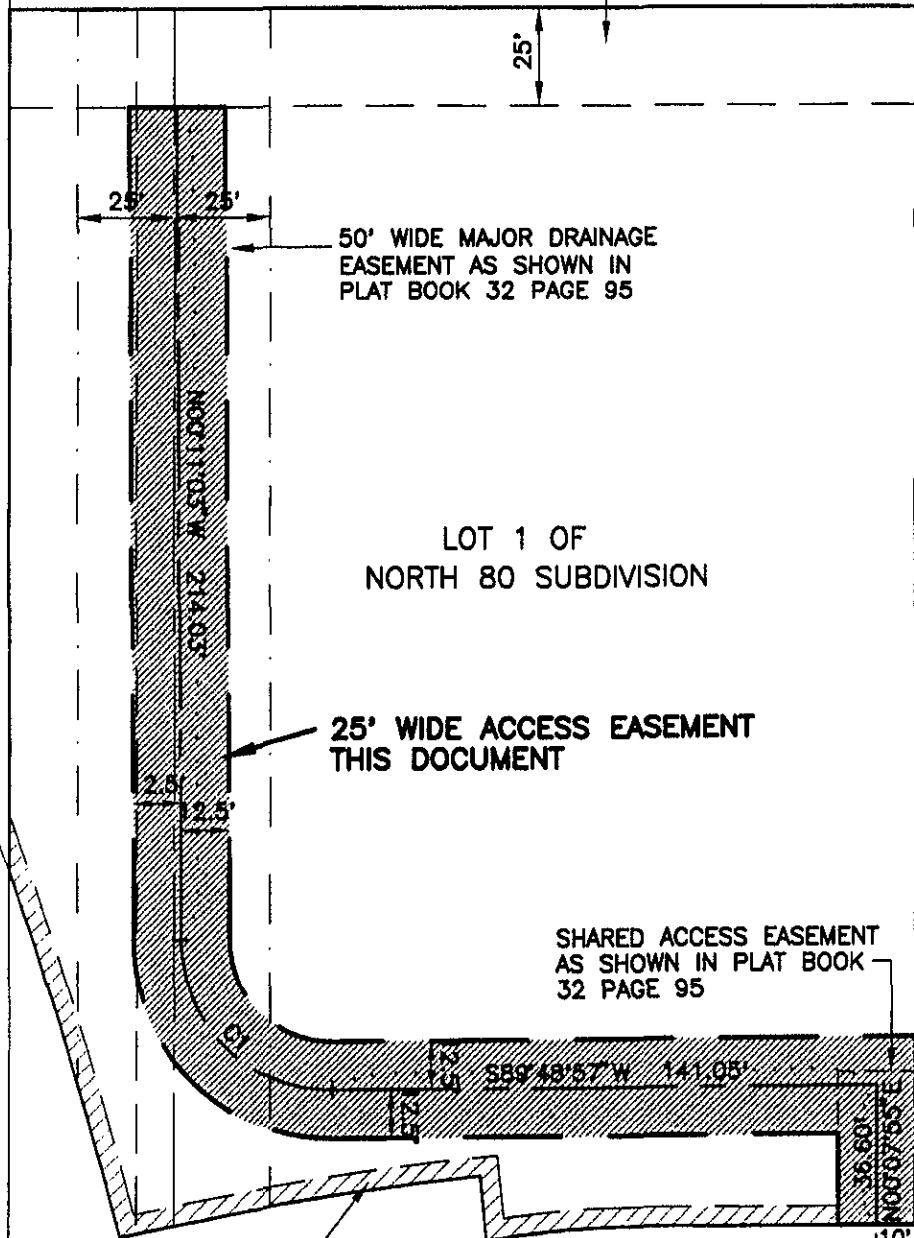
LOT 1 OF NORTH 80 SUBDIVISION

LOCATED IN "GOVERNMENT" LOT 2 (SW¹/₄ OF THE NW¹/₄)
SECTION 19, T1N, R8E, BHM,
RAPID CITY, PENNINGTON COUNTY, SOUTH DAKOTA

CURVE	LENGTH	RADIUS	DELTA	CHORD BEARING	CHORD DISTANCE
C1	61.26	39.00	90°00'00"	S45°11'03"E	55.15



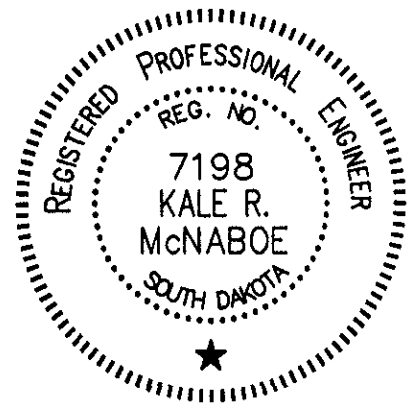
66' WIDE SECTION LINE RIGHT-OF-WAY
25' WIDE MAJOR DRAINAGE EASEMENT AS SHOWN IN PLAT BOOK 32 PAGE 95



FEBRUARY 18, 2005

SCALE: 1" = 50'

"GOVERNMENT" LOT 2



FIFTH STREET

NON-ACCESS EASEMENT AS SHOWN IN PLAT BOOK 32 PAGE 95

SHARED ACCESS EASEMENT AS SHOWN IN PLAT BOOK 32 PAGE 95

SHARED ACCESS EASEMENT AS SHOWN IN MISC. BOOK PAGE _____

STUMER ROAD
VARIALE WIDTH R.O.W.

RECEIVED
FEB 24 2005

Rapid City Growth
Management Department