

# EXHIBIT B

## EASEMENT

LOCATED IN THE BALANCE OF LOT C OF THE SW1/4 OF SECTION 14, T1N, R7E, BHM, RAPID CITY, PENNINGTON COUNTY, SOUTH DAKOTA

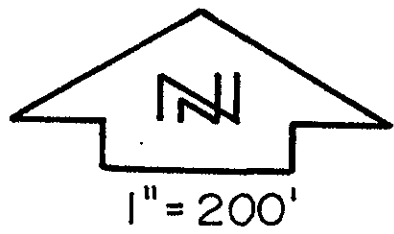


Book: 99  
Page: 1778  
R02- 3565.0 Page: 005 of 005  
02/20/2002 04:56p 18.00  
Pennington County, South Dakota  
Donna M. Mayer Misc Real Est

### RECEIVED

FEB - 7 2005

Rapid City Growth  
Management Department



- ▲ = R.O.W. MONUMENT
- = FOUND 3095 CAP, OR AS SHOWN

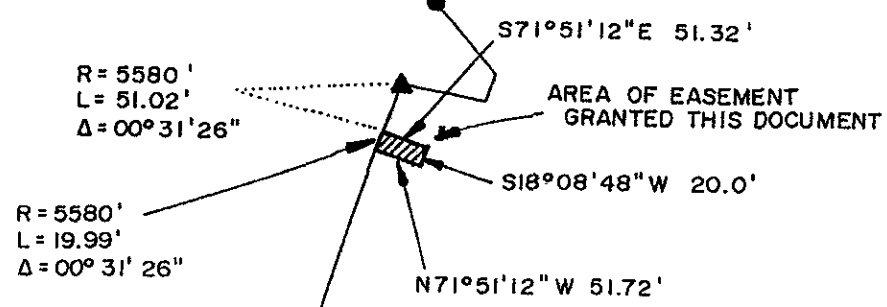


### US HIGHWAY 16

### BALANCE OF LOT C

(BOOK 4, PAGE 164)

1/4 SECTION LINE



NOTE: CURVE RADIUS IS FROM A 1997 INDEPENDENT SURVEY.  
 IT IS THE INTENT OF THIS DOCUMENT THAT THE WESTERLY EDGE OF EASEMENT BE COINCIDENT WITH THE EDGE OF HIGHWAY RIGHT-OF-WAY.

### LOT 2 OF LOT C