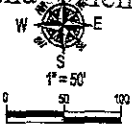


DEC 10 2004

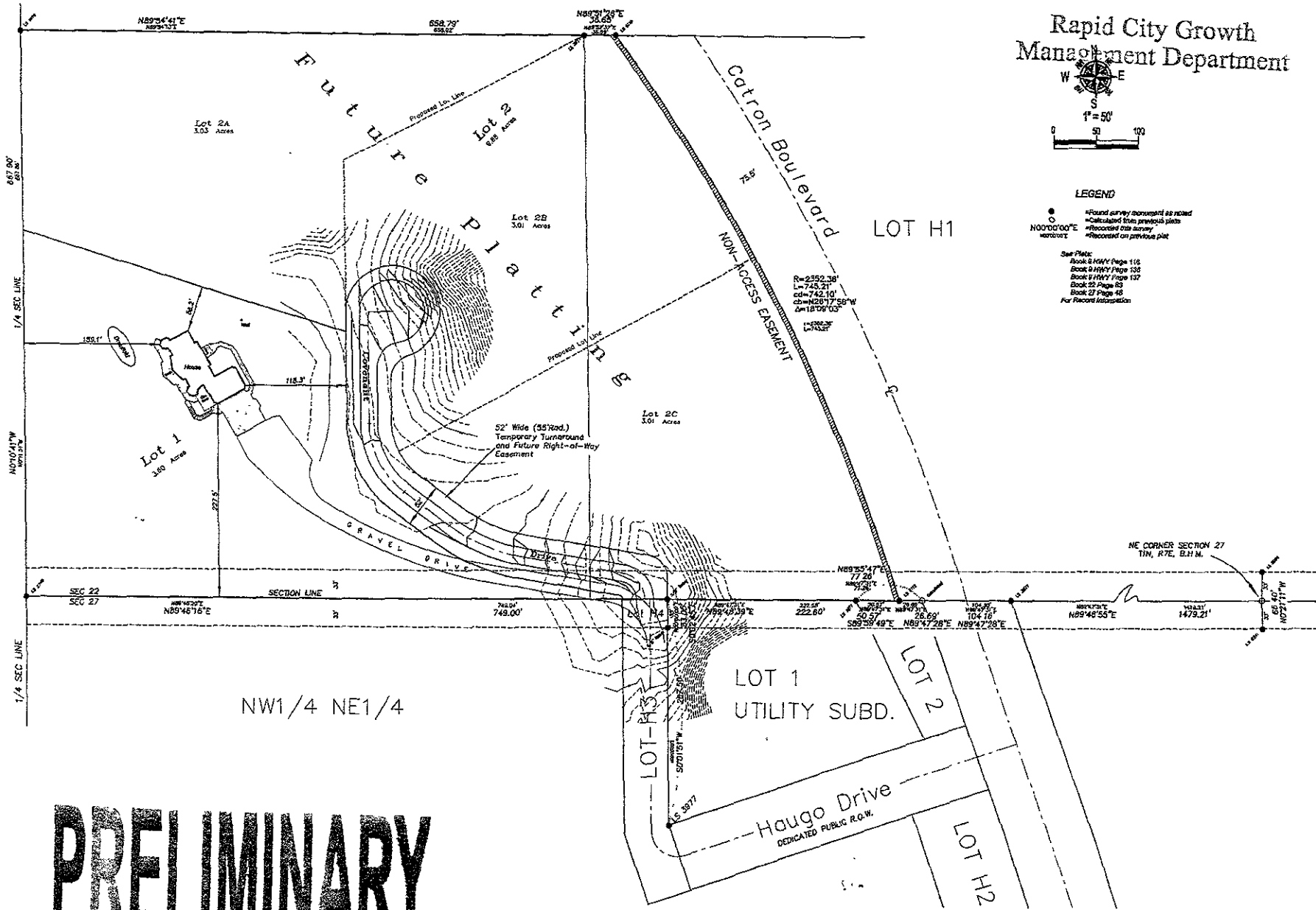
Rapid City Growth Management Department



LEGEND

- Found survey monument as noted
- Calculated from previous plots
- ⊕ Recorded this survey
- ⊖ Recorded on previous plot

See Plots:  
 Book 6 HWY Page 116  
 Book 9 HWY Page 133  
 Book 11 HWY Page 137  
 Book 22 Page 63  
 Book 27 Page 48  
 For Record Interpretation



Boundary Survey and Development Layout  
 SW1/4 SW1/4 SE1/4 and  
 SE1/4 SW1/4 SE1/4 less Lot H1  
 Section 22, T1N, R7E, B.H.M.,  
 Rapid City, Pennington County, South Dakota

1022 Main Street  
 P.O. Box 9154  
 Rapid City, South Dakota  
 57709  
 (605) 348-1536  
 (605) 341-1112 (C)

Fisk Land Surveying  
 & Consulting  
 Engineers, Inc.



Date: 11/18/04  
 Surveyed by: ML/BL  
 Drawn by: BL/RM  
 Checked by: JF/ML  
 Revisions: 11/18/04

Project No. 04-11-02

PRELIMINARY