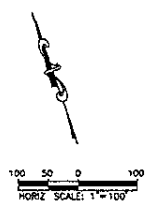


04SR056



HORIZONTAL CONTROL DATA

TYPE	STATION	NORTHING (FT)	EASTING (FT)
Monica 1	STA 14+70.3	122851.13	3097.20
Monica 2	STA 14+80.2	122851.13	3097.20
Monica 3	STA 14+90.1	122851.13	3097.20
Monica 4	STA 15+00.0	122851.13	3097.20
Monica 5	STA 15+10.0	122851.13	3097.20
Monica 6	STA 15+20.0	122851.13	3097.20
Monica 7	STA 15+30.0	122851.13	3097.20
Monica 8	STA 15+40.0	122851.13	3097.20
Monica 9	STA 15+50.0	122851.13	3097.20
Monica 10	STA 15+60.0	122851.13	3097.20
Monica 11	STA 15+70.0	122851.13	3097.20
Monica 12	STA 15+80.0	122851.13	3097.20
Monica 13	STA 15+90.0	122851.13	3097.20
Monica 14	STA 16+00.0	122851.13	3097.20
Monica 15	STA 16+10.0	122851.13	3097.20
Monica 16	STA 16+20.0	122851.13	3097.20

CONTROL DATA

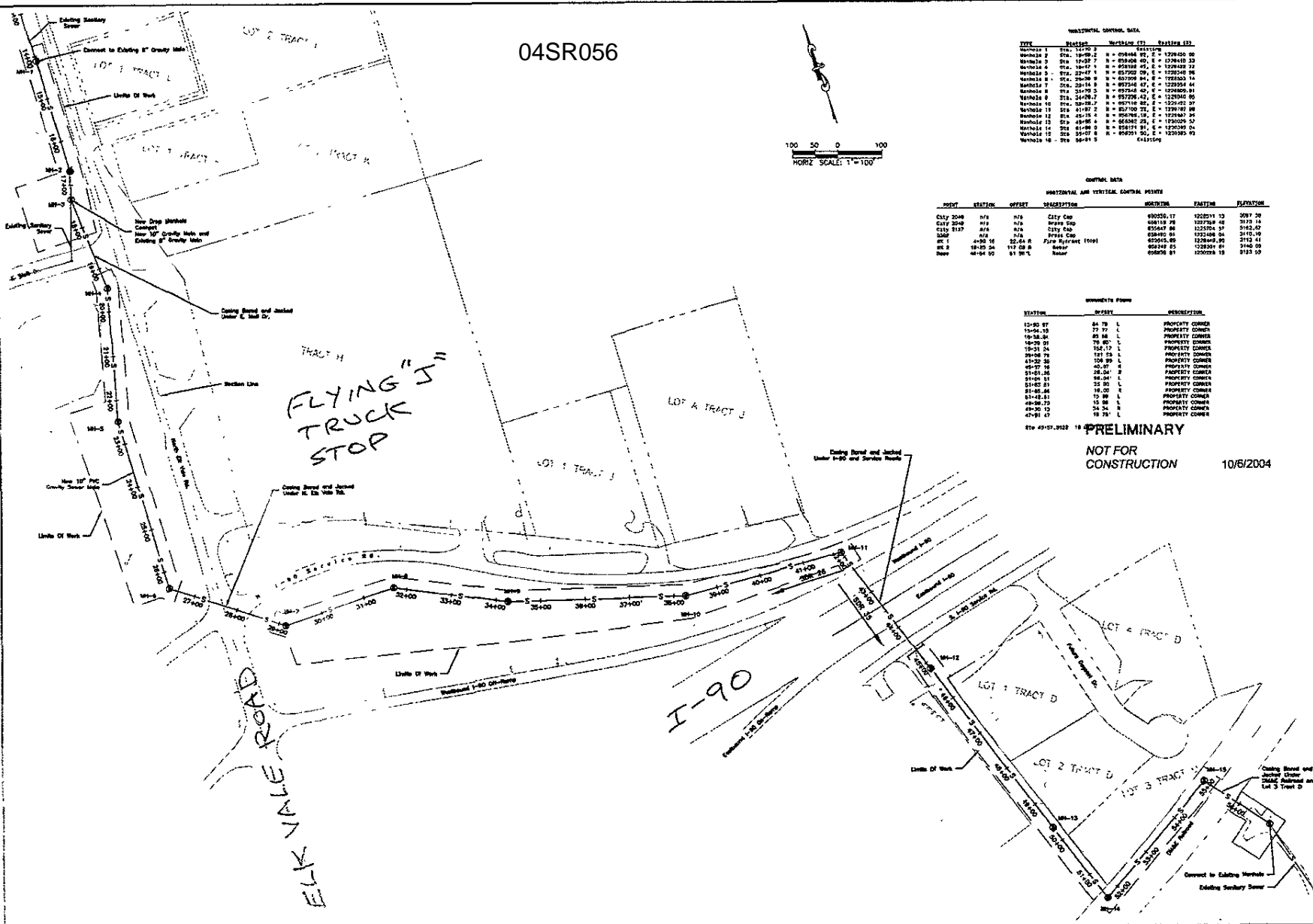
HORIZONTAL AND VERTICAL CONTROL POINTS

POINT	STATION	OFFSET	DESCRIPTION	NORTHING	EASTING	ELEVATION
City 2048	n/a	n/a	City Cap	69058.17	122851.13	3097.20
City 2049	n/a	n/a	Water Cap	68818.28	122788.42	3123.44
City 1117	n/a	n/a	City Cap	65647.86	122576.37	3143.65
UMP	n/a	n/a	UMP Cap	65845.81	122488.04	3115.49
HC 1	14+80.18	32'-6" R	Face Retard Foot	65555.89	122844.89	3113.41
HC 2	14+80.24	11' 0" R	Rebar	65240.23	122831.81	3143.03
Rebar	14+80.00	81' 0" L	Rebar	65026.81	122028.18	3123.50

PROPERTY POINTS

STATION	OFFSET	DESCRIPTION
12+80 ST	24.73 L	PROPERTY CORNER
15+46.10	77.77 L	PROPERTY CORNER
16+38.24	48.48 L	PROPERTY CORNER
16+29.21	79.40 L	PROPERTY CORNER
16+21.24	152.17 L	PROPERTY CORNER
20+08.78	121.53 L	PROPERTY CORNER
41+02.58	108.89 L	PROPERTY CORNER
49+37.16	40.07 R	PROPERTY CORNER
51+01.46	28.24 R	PROPERTY CORNER
51+09.31	68.04 L	PROPERTY CORNER
51+02.31	22.10 L	PROPERTY CORNER
51+05.86	18.00 L	PROPERTY CORNER
51+02.31	17.18 L	PROPERTY CORNER
49+38.73	15.28 L	PROPERTY CORNER
49+20.12	24.28 L	PROPERTY CORNER
47+91.47	19.75 L	PROPERTY CORNER

PRELIMINARY
NOT FOR CONSTRUCTION
10/6/2004

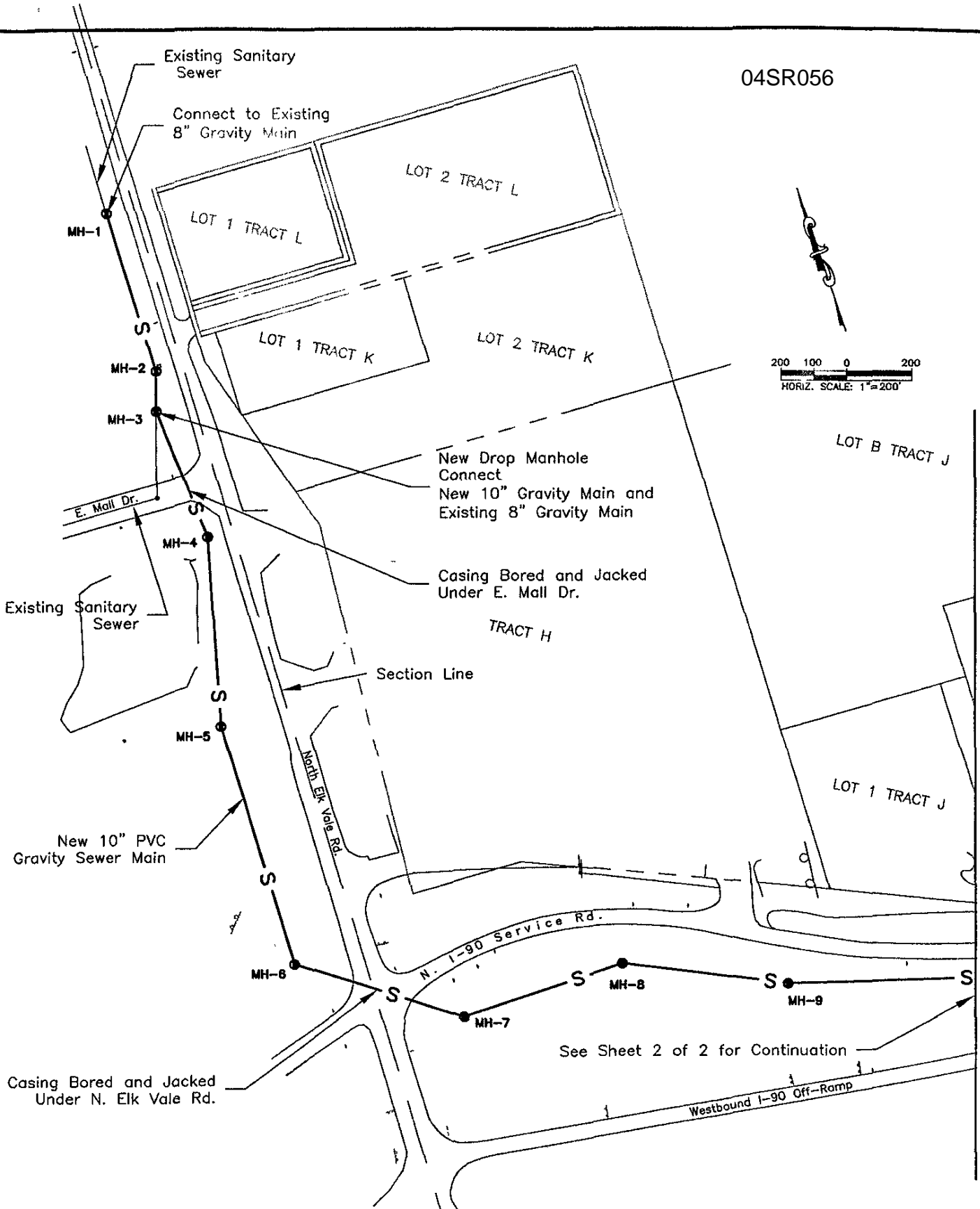


CITY OF RAPID CITY
PUBLIC WORKS DEPARTMENT
ENGINEERING DIVISION

Scale: 1"=100'
Files Submitted From:
Kinkaman, Lee & Johnson
Occupancy: Occupancy
TIC: 25
Only Date: 10/6/2004
Internal Job No: 01480004
10/03/04

North Elk Vale Sewer Main Extension
City of Rapid City

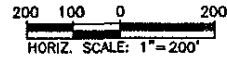
04SR056



**NORTH ELK VALE SANITARY SEWER EXTENSION
 SS03-1292
 PROPOSED ALIGNMENT
 SHEET 1 OF 2**

See Sheet 2 of 2 for Continuation

**Kadmas
 Lee &
 Jackson**
 Engineers, Surveyors
 and Planners



Casing Bored and Jacked Under I-90 and Service Roads

LOT A TRACT J

See Sheet 1 of 2 for Continuation

N. I-90 Service Rd.

Westbound I-90

Eastbound I-90

S. I-90 Service Rd.

MH-10

MH-11

MH-12

LOT 4 TRACT D

Casing Bored and Jacked Under DM&E Railroad

Future Degeest Dr.

LOT 1 TRACT D

LOT 2 TRACT D

LOT 3 TRACT D

MH-15

MH-13

MH-14

Connect to Existing Manhole

Existing Sanitary Sewer

NORTH ELK VALE SANITARY SEWER EXTENSION
SS03-1292
PROPOSED ALIGNMENT
SHEET 2 OF 2