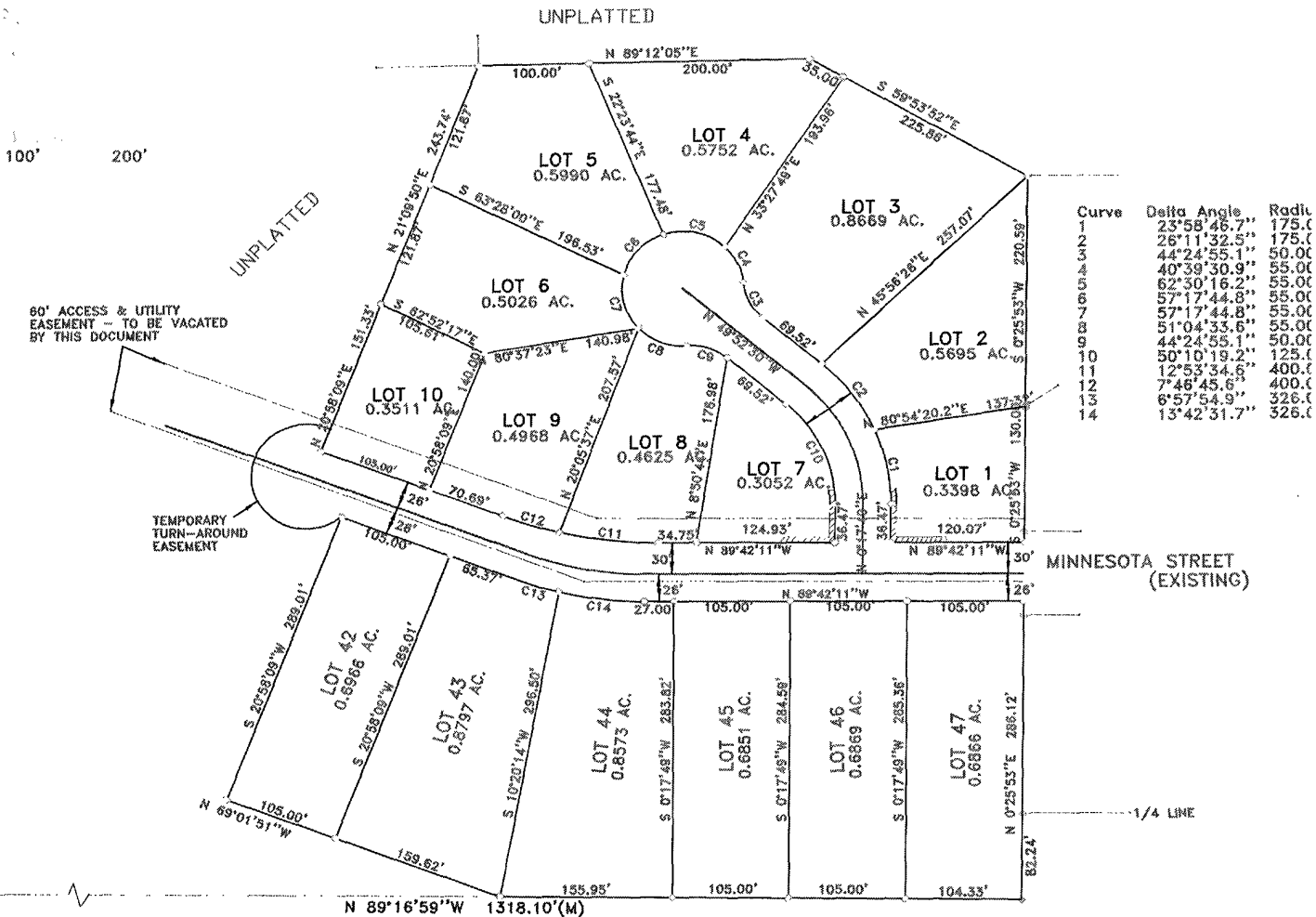


# MINNESOTA RIDGE SUBDIVISION #2

PLAT OF LOTS 1 THRU 10 AND 42 THRU 47

LOCATED IN SW1/4 OF SECTION 13, T1N, R7E, B.H.M.  
RAPID CITY, PENNINGTON COUNTY, SOUTH DAKOTA



**LEGEND**

- Found Survey Monument as Noted.
- Set 5/8" Rebar with Plastic Cap marked "Hanson #6251"
- (M) Measured This Survey
- (R) Survey Information of Record
- Non-Access Easement

UNPLATTED

Prepared by:  
Hanson Surveying & Mapping  
832 Horace Mann Drive  
Rapid City, SD 57701  
605-388-9652

March 24, 2004

Drainage and Utility Easements:  
are interior side of all lot lines.

Street R.O.W. dedicated by this plat : \_\_\_\_ AC. +/-

Drainage and major utility easements shown hereon shall be kept clear of all obstructions including but not limited to buildings, walls, fences, hedges, and shrubs. These easements grant to all public authorities the right to install, operate, maintain, inspect, and repair such improvements and as it deems expedient to facilitate drainage from any source.