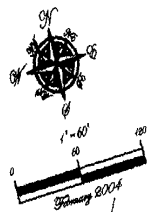
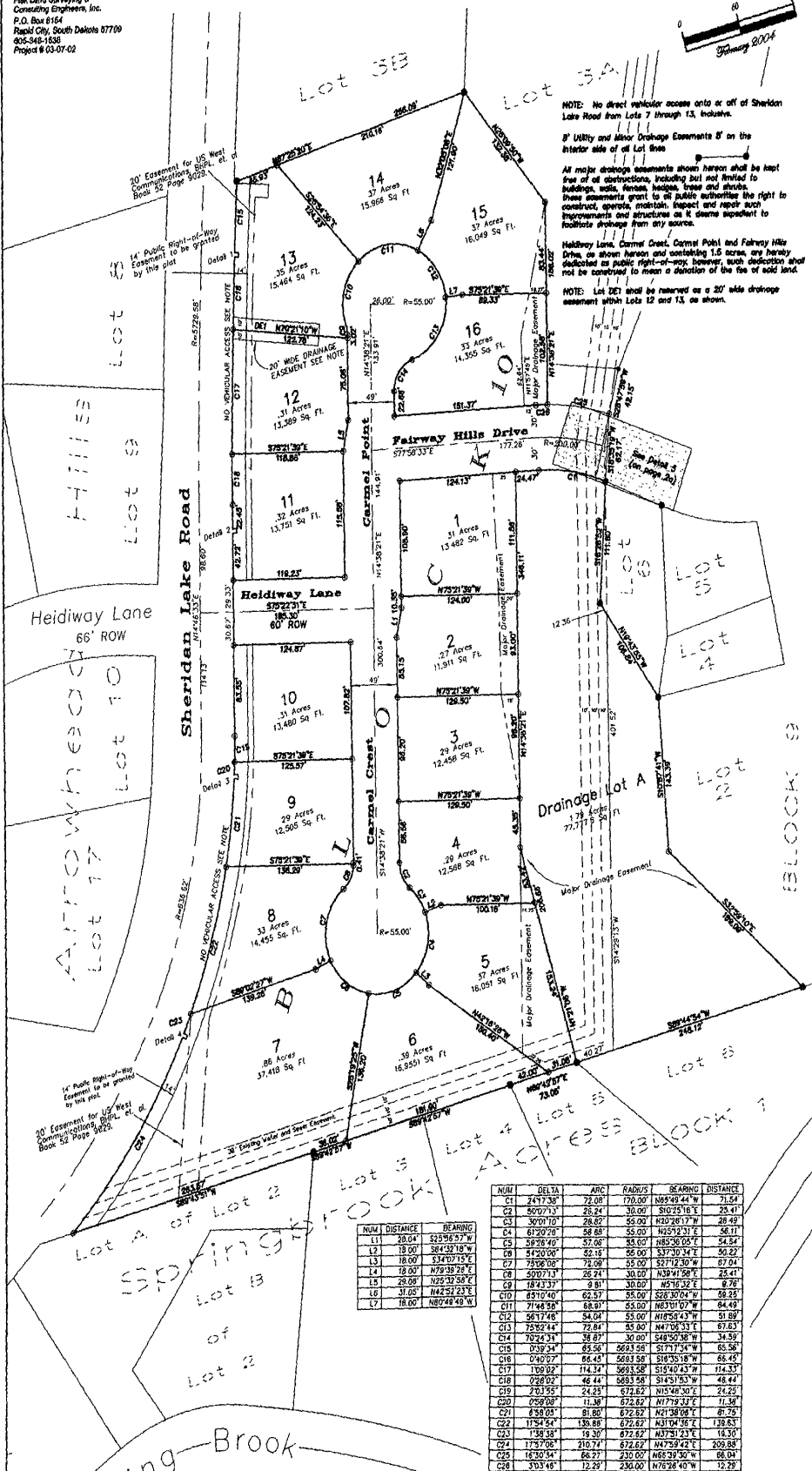


**Plat of Lots 1 through 16 inclusive and Drainage Lot A of Block 10 of Fairway Hills P.R.D. and Dedicated R.O.W. 04SV016**

Formerly all of Lot 3, all of Lot DE1 of Lot 3A and a portion of Lot 3A of Fairway Hills P.R.D., and a Portion of the unplatted portion of the NW1/4 SW1/4 of Section 15, T1N, R7E, BHM of Fairway Hills P.R.D.  
All located in the SW1/4 of Section 15, T1N, R7E, BHM, Rapid City, Pennington County, South Dakota



Prepared by:  
Field Land Surveying &  
Consulting Engineers, Inc.  
P.O. Box 8164  
Rapid City, South Dakota 57709  
605-348-1838  
Project # 03-07-02



NOTE: No direct vehicular access onto or off of Sheridan Lake Road from Lots 7 through 13, inclusive.

B' Utility and Minor Drainage Easements B' on the interior side of all Lot 5es

All major drainage easements shown hereon shall be kept free of obstructions, including but not limited to buildings, wells, fences, hedger, trees and shrubs. These easements grant to all public authorities the right to construct, operate, maintain, inspect and repair such improvements and structures on it deemed expedient to facilitate drainage from any source.

Heidway Lane, Caravel Crest, Caravel Point and Fairway Hills Drive as shown hereon and containing 1.5 acres, any hereby dedicated as public right-of-way, however, such dedication shall not be construed to mean a donation of the fee of said land.

NOTE: Lot DE1 shall be reserved as a 20' wide drainage easement within Lots 12 and 13, as shown.

NUM	DISTANCE	BEARING
L1	26.04'	S25°46'37" W
L2	18.00'	S84°33'16" W
L3	18.00'	S34°10'15" E
L4	18.00'	N79°38'26" E
L5	28.08'	N25°32'58" E
L6	31.05'	N42°52'23" E
L7	18.00'	N87°48'42" W

NUM	DELTA	ARC	RADIUS	BEARING	DISTANCE
C1	2471'38"	72.08'	170.00'	N89°49'44" W	71.54'
C2	3607'73"	26.24'	30.00'	S10°28'16" E	28.40'
C3	3007'10"	26.24'	35.00'	N82°26'17" W	28.49'
C4	6120'28"	58.88'	55.00'	N25°12'31" E	58.11'
C5	5878'40"	57.08'	33.00'	N85°36'05" E	54.84'
C6	5420'00"	52.18'	36.00'	S37°30'34" E	56.22'
C7	7898'08"	78.98'	55.00'	S77°12'30" W	67.61'
C8	5097'11"	26.24'	30.00'	N38°41'58" E	28.41'
C9	18443'37"	39.81'	30.00'	N5°16'32" E	37.76'
C10	8510'40"	62.57'	35.00'	S28°30'04" W	58.25'
C11	7148'58"	68.97'	35.00'	N63°01'07" W	64.49'
C12	5617'48"	54.04'	35.00'	N18°50'43" W	51.89'
C13	7838'42"	78.38'	35.00'	N47°25'33" E	67.63'
C14	7824'31"	58.87'	30.00'	S48°50'30" W	34.59'
C15	039'34"	65.56'	6683.58'	S17°11'54" W	65.56'
C16	040'07"	66.45'	5683.58'	S16°35'18" W	66.45'
C17	109'02"	114.37'	3693.58'	S15°40'43" W	114.37'
C18	028'02"	46.44'	5683.58'	S14°51'53" W	46.44'
C19	213'55"	24.25'	672.62'	N35°48'30" E	24.25'
C20	058'08"	11.39'	672.62'	N17°19'33" E	11.39'
C21	638'03"	81.80'	672.62'	N21°38'08" E	81.75'
C22	1154'54"	136.88'	672.62'	N31°04'36" E	136.83'
C23	138'38"	18.30'	672.62'	N37°31'23" E	18.30'
C24	175'708"	216.74'	672.62'	N47°59'42" E	208.88'
C25	1630'34"	66.27'	230.00'	N68°29'50" W	66.04'
C26	303'46"	12.29'	230.00'	N76°28'40" W	12.29'