

03SV043

SURVEY PLAT OF

Lot 3R and Lot 5R in Block 6 of Radio Towers Addition,

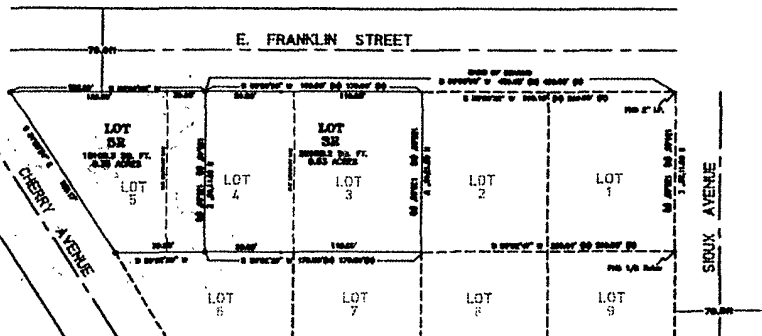
Formerly Lots 3, 4 and 5 in Block 6 of Radio Towers Addition,

Located in the SE1/4 of SE1/4 of Section 6, T.1N., R.8E., B.H.M., Rapid City,

Pennington County, South Dakota.



1" = 80 Feet
October 2003



LEGEND

- Set 5/8" Rebar with Cap marked "Vestnetz 7718"
- Found Plastic Cap Marked 2852, Unless otherwise noted.

SURVEYOR'S NOTES

- 1) Utility & Minor Drainage Easements:
5' Wide on the Interior side of all lot lines.
- 2) Building Restrictions: Per City Ordinance Requirements