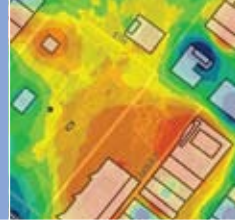


Be part of the largest GIS
conference in the world.

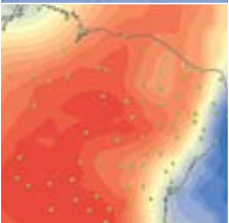
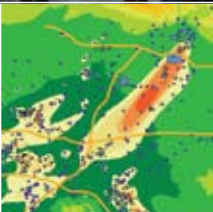
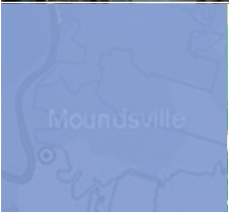
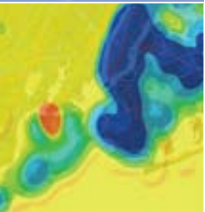


2008 Twenty-eighth Annual ESRI International User Conference

August 4–8, 2008
San Diego, CA

www.esri.com/uc

- Gain insight to address challenges.
- Learn about the future of GIS.
- Be part of the ESRI® GIS community.



2008 ESRI International User Conference



"This has been another amazing conference. Every year we seem to exceed the number of leads and executive, partner, and customer meetings from the previous year. Great job, ESRI."

David Kim
Global Alliance Executive
Citrix Systems, Inc.

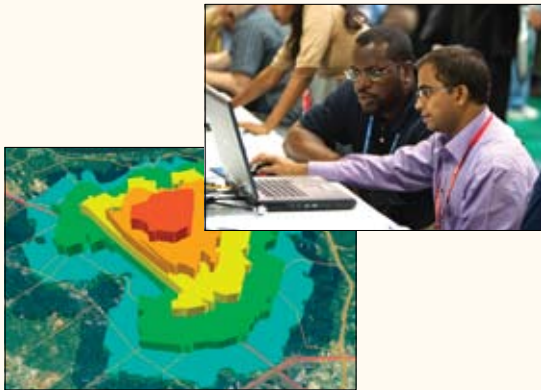
It is difficult to describe the ESRI User Conference to those who have not attended. The conference is huge, yet you can easily find people doing similar work. There are so many sessions that many are offered twice in case you can't make it the first time. It is five days long, and yet you can't see it all. Come see what the excitement is about and make the ESRI UC part of your plans every year.

Table of Contents

Saturday–Sunday	5
Concurrent Conferences	6
Monday	7
Tuesday–Thursday	8
Exhibits	9
Friday	9
Getting Involved	10
Activities	12
Training Classes	13
Registration, Travel, and Hotel Information	14
For Your Information	15

Fast Facts

- Map posters and special displays by users from more than 120 countries
- 300+ technical workshops presented by ESRI experts
- 900+ user presentations on their challenges and successes
- 300+ business partners offering a wide selection of solutions and services
- 100+ user group meetings for sharing information, ideas, and experiences



Why Attend the ESRI UC?

It's the pulse of the GIS community.

This one-of-a-kind event is a must-attend occasion for all users. The ESRI International User Conference (ESRI UC) is the largest geographic information system (GIS) conference of the year, offering tremendous breadth and depth to attendees. This is your chance to be educated; motivated; and part of an active, innovative community.

Hear from Jack.

At Monday's Plenary Session, ESRI president Jack Dangermond will share his vision for GIS. Find out where GIS trends, products, and uses are heading.

See the absolute latest in GIS.

Explore the largest collection of GIS solutions in the world at the ESRI Showcase and Exhibit Pavilion. Test-drive state-of-the-art technology in the Hands-on Learning Center or have an expert walk you through recent software developments at one of the product islands.

Discover new applications and best practices.

Get fresh project ideas from your peers through user presentations, user group meetings, social activities, and networking. Collaborate, troubleshoot, and share your own GIS tips and tricks.

Align your GIS plans with ESRI's.

Gain insight on ESRI software development by hearing firsthand from our lead developers. Attend the plenary and workshops and drop by the product islands to get updated and find out more about what's next for ESRI GIS.

Grow your GIS projects.

Meet with our Professional Services staff to help position your GIS project for success. Experts from a range of industries will be available for advice on implementing, growing, and sustaining your GIS projects.

Solve problems with the experts.

Find answers face-to-face. Bring your questions to the technical support area, where experts will be on hand to help work through your project problems.

Connect with people like you.

Join other users from your industry—as well as ESRI staff dedicated to your field—in informal meetings throughout the week, an array of regional and Special Interest Group meetings, and one-on-one meetings at the industry solutions islands.

Get information you can put to work right away.

From product and industry updates to a new skill learned or a pearl of wisdom shared, the ESRI UC offers you a week of valuable sessions, workshops, and interaction to energize you with ideas and tools you can put to work immediately.

2008 ESRI International User Conference EXPO



Who Should Attend?

The ESRI UC is for all users of ESRI software and data. There is something enlightening and inspiring for everyone including

- ◆ GIS practitioners
- ◆ GIS department managers
- ◆ GIS analysts
- ◆ Project managers
- ◆ GIS educators and trainers
- ◆ Application developers
- ◆ Decision makers
- ◆ Business owners seeking to leverage the power of GIS



What You'll Take Away

- ◆ Practical, easy-to-apply advice and tips to quickly improve your daily productivity
- ◆ Guidance from others who are using GIS to solve similar problems
- ◆ Direct contact with ESRI staff
- ◆ The vision of GIS for the future, providing direction for your organization



"As a first time attendee, I found the ESRI UC to be a very uplifting experience; the atmosphere was very friendly and welcoming and the work that many people are doing was so inspiring it makes me proud to be a small part of the GIS 'family'"

Sue Robinson
Mapping Systems—Communications
Milwaukee County Sheriff's Office
Milwaukee, Wisconsin

For more information, visit www.esri.com/uc.

Preconference Seminars

A variety of preconference seminars are offered Saturday and Sunday, August 2 and 3. These seminars provide one to two days of in-depth focus on a particular topic. Keep these seminars in mind when making your conference plans. For a complete list of seminars, please visit www.esri.com/ucprecons.

Saturday, August 2	
Preconference Seminars	8:00 AM–5:00 PM
EdUC	8:30 AM–6:00 PM
Survey & Engineering GIS Summit	8:30 AM–7:00 PM
Sunday, August 3	
Preconference Seminars	8:00 AM–5:00 PM
EdUC	8:30 AM–4:30 PM
Survey & Engineering GIS Summit	8:00 AM–4:30 PM
Welcome Social	4:00 PM–6:00 PM

Concurrent Conferences

Two conferences are held concurrently with the ESRI UC. The Education User Conference (EdUC) and Survey & Engineering GIS Summit (SEG Summit) begin the weekend prior to the ESRI UC (see next page for more details).

Send Your Executive!



Senior Executive Leadership Seminar

Sunday–Tuesday, August 3–5

The Senior Executive Leadership Seminar is for corporate-level executives and top managers who direct geospatial activities, strategic planning, or policy development related to geographic data, initiatives, and partnerships. Day one provides an overview of “big picture” issues for companies, cities, states, federal agencies, nongovernmental organizations, and utilities as well as examines how managers can effectively guide the deployment of spatial data and services in their organizations and build partnerships in the geospatial community. CEOs, chief technical officers (CTOs), CIOs,

geographic information officers (GIOs), agency directors, deputy ministers, elected representatives, and others in leadership positions will participate. On days two and three, executive attendees are invited to participate in the ESRI UC including the Plenary Session, Exhibit Hall, and breakout sessions.

For more information or to nominate an executive from your organization, contact ucses@esri.com or call 909-307-3006.

Concurrent Conferences

Education User Conference

Saturday–Tuesday, August 2–5

Cost: \$150

The EdUC is the largest and most complete GIS education event of the year, with more than 600 educators expected from all over the world. The forum brings educators together to share their experiences and knowledge with others involved in geographic learning. The EdUC covers everything you need to know to start or grow GIS programs in administration, teaching, research, libraries, and museums.

How Will You Benefit?

- ◆ Network with your colleagues.
- ◆ Experiment with the latest technology.
- ◆ Brainstorm with technology experts.
- ◆ Freshen your approach to your curriculum.
- ◆ Stay current on industry trends.
- ◆ Learn about new opportunities, data, and courses.
- ◆ Discover new products, lessons, and books.
- ◆ Share your research.

For more information, visit www.esri.com/educ. You can send your questions to educ@esri.com.



ESRI Survey & Engineering GIS Summit

Saturday–Tuesday, August 2–5

Cost: \$325

GIS technology creates new opportunities by building innovative solutions for all types of survey and engineering projects, no matter the size or scope. The 2008 summit will explore the latest developments for surveyors and engineers and uncover how GIS technology is mapping the road to new possibilities.

How Will You Benefit?

- ◆ Learn more about the GIS industry from sources that matter.
- ◆ Collaborate with colleagues as well as ESRI business partners and vendors.
- ◆ Attend presentations given by users, industry leaders, and technology experts on an array of GIS, survey, and engineering topics.
- ◆ Attend sessions that meet your needs, whether you're just getting started or have complex, technical questions.
- ◆ Find out how GIS offers better work processes and extends business practices.

For more information, visit www.esri.com/segsummit. You can send your questions to surveysummit@esri.com.



To register for any of the concurrent events, visit www.esri.com/ucregistration.

Plenary Session

Submit your map images, videos, and pictures for possible inclusion in Jack Dangermond's opening presentation at the ESRI UC Plenary Session.

Deadline: June 20.

Monday, August 4

ESRI UC Plenary Session	8:30 AM–3:30 PM
Map Gallery Opening and Evening Reception	4:00 PM–8:30 PM

Map Gallery Opening and Evening Reception

Monday Evening, August 4

If you would like to participate in the Map Gallery, visit www.esri.com/uc for an online submission form.

The deadline to enter is July 7.



Plenary Session

Monday, August 4

The plenary is an enriching, passionate, and unforgettable presentation. Beginning with a celebratory look at the accomplishments of the ESRI user community, Jack Dangermond will welcome GIS users and acknowledge the people, projects, and programs that are making a difference in the world today. He will also discuss industry trends, the direction of ESRI, and his vision for the future of GIS. Product managers and teams will follow with updates on current and planned ArcGIS® solutions, live demonstrations of new tools, and a look at things to come. The session will conclude with the Keynote Address, leadership awards, and special recognition of invited schoolchildren. Join us and see what's on the horizon for GIS; come away able to share this inspirational vision with your organization.



Map Gallery Opening and Evening Reception

Monday Evening, August 4

Vivid, detailed, and revealing, the Map Gallery's collection of alluring displays inaugurates the conference week Monday night during the Evening Reception. See thousands of maps, posters, and Internet projects illustrating the power of GIS and conveying the successes of its user community. Several displays will feature especially innovative GIS uses that have achieved something extraordinary in an organization or community. The map collection and distinctive displays will be open throughout the conference week.



Tuesday ♦ Thursday

Paper Sessions

Tuesday–Thursday, August 5–7

More than 1,000 user papers are presented each year during the ESRI UC and concurrent events. Analysts, developers, managers, and industry experts share insight about their applications and projects. The moderated sessions make up the most comprehensive collection of GIS papers in the world.

GIS Concepts and Industry Focus Sessions

Tuesday–Thursday, August 5–7

Learn about GIS concepts and industry trends in these sessions geared toward people new to GIS, interested in learning about new trends, or want to review the core elements of GIS. These sessions will provide you with context behind GIS concepts and will outline strategies for using GIS in a particular industry.

Thursday Night Celebration

Thursday, August 7

You're invited to dine, dance, play games, and enjoy the entertainment during this celebration. Spouses, children, and guests are always welcome to join in the fun; additional tickets can be purchased at the Activities Desk during the conference.

Tuesday, August 5

Map Gallery	8:00 AM–6:00 PM
GIS Kids Camp	8:30 AM–NOON
EdUC Sessions	8:30 AM–2:45 PM
Paper Sessions	8:30 AM–4:30 PM
Technical Workshops	8:30 AM–4:30 PM
GIS Concepts and Industry Focus Sessions	8:30 AM–4:30 PM
Exhibit Pavilion	9:00 AM–6:00 PM
Regional User Group and Special Interest Group Meetings	Lunch and early evening

Wednesday, August 6

Map Gallery	8:00 AM–6:00 PM
GIS Kids Camp	8:30 AM–NOON
Paper Sessions	8:30 AM–4:30 PM
Technical Workshops	8:30 AM–4:30 PM
GIS Concepts and Industry Focus Sessions	8:30 AM–4:30 PM
Exhibit Pavilion	9:00 AM–6:00 PM
Regional User Group and Special Interest Group Meetings	11:30 AM–7:00 PM
Exhibit Pavilion Family Night	4:00 PM–6:00 PM

Thursday, August 7

Map Gallery	8:00 AM–1:30 PM
GIS Kids Camp	8:30 AM–NOON
Paper Sessions	8:30 AM–4:30 PM
Technical Workshops	8:30 AM–4:30 PM
GIS Concepts and Industry Focus Sessions	8:30 AM–4:30 PM
Exhibit Pavilion	9:00 AM–1:30 PM
Regional User Group and Special Interest Group Meetings	NOON–1:00 PM
Thursday Night Celebration	5:30 PM–10:30 PM



Technical Workshops

Tuesday–Friday, August 5–8

Technical workshops offer you a chance to get together with ESRI developers, programmers, and project managers as they discuss the GIS products they have created and explain details about using ArcGIS software. To address your specific needs and questions, more than 170 workshops are held during the ESRI UC.

Special Interest and Regional User Group Meetings

Tuesday–Thursday, August 5–7

Join your peers at these unique networking sessions. Special Interest Groups (SIGs) and Regional User Groups (RUGs) are organized by industry, field, area of interest, or region. Meetings are held during the conference week, usually during lunch breaks or as evening sessions. If you would like to request a SIG or RUG meeting, visit www.esri.com/uc. Deadline: April 11.

Family Night

Wednesday, August 6

Show your family and friends what ESRI and GIS are all about. For two hours, the Exhibit Pavilion and ESRI Showcase will be open to family members and guests of registered conference attendees.



ESRI Showcase

Tuesday–Thursday, Early Afternoon, August 5–7

The ESRI Showcase is a comprehensive resource area where you can connect with ESRI staff and see ESRI product demonstrations. Learn more about GIS software, product upgrades, site licenses, training, and anything else you need to know. Whatever your interest or level of expertise or the nature of your organization, there will be someone at the showcase who can provide answers to questions about products, technical support, training, professional services, or customer service.



Exhibit Pavilion

Tuesday–Thursday, Early Afternoon, August 5–7

ESRI business partners, including hardware vendors, application developers, software dealers, service providers, data publishers, and many other GIS-related technology companies, will display technology solutions in the Exhibit Pavilion. The pavilion is a convenient venue to view new products, meet with vendors, and collect all the information you need for your GIS projects. If you are interested in exhibiting, e-mail ucexhibits@esri.com or call 909-793-2853, extension 1-2587.

Friday

Closing Session

Friday, August 8

There is no better way to wrap up the conference week. The closing session is an open forum for you to ask questions and give your feedback to Jack Dangermond and senior ESRI staff. Your thoughts and suggestions are very important, so please share them. Awards for Map Gallery entries and the User Software Applications Fair will also be announced as part of this final session.

Friday, August 8

Technical Workshops	8:30 AM–9:45 AM
Closing Session	10:15 AM–NOON



Technical Workshops

Tuesday–Friday, August 5–8

Technical workshops offer you a chance to get together with ESRI developers, programmers, and project managers as they discuss the GIS products they have created and explain details about using ArcGIS software. To address your specific needs and questions, more than 170 workshops are held during the ESRI UC.

Get Involved

Student Assistantship Program

Application Deadline: May 9

The ESRI UC Student Assistantship Program is a student's chance to attend the world's biggest GIS conference and experience a unique, weeklong learning and networking opportunity. Increase your GIS knowledge in a dynamic environment with some of the leading experts in the field. If you are a graduate student or fourth-year undergraduate student who uses geospatial applications and concepts in your work, you may apply for the program. ESRI will select up to 60 students to take part, which includes assisting ESRI staff with monitoring sessions, registration, setup, teardown, and overall event logistics. ESRI will also set aside time for the students to attend sessions, exhibits, meetings, and activities. The students will receive a full registration package for the conference, hotel accommodations, and a small stipend for meals; travel and personal expenses are not covered. If you are interested, submit a letter describing your academic interest in GIS, your experience with ESRI software, a resumé, and why you wish to be considered. You will need to supply two letters of reference; one letter should be from a professor. Be sure to include a telephone number, mailing address, and e-mail address where you can be contacted through November 2008.

All applications should be sent to ucstudents@esri.com and arrive no later than May 9, 2008. Selected students will be notified by June 13, 2008. Complete details, including the application process, are available at www.esri.com/ucstudents.



Academic GIS Program Fair

Submission Deadline: April 11

The Academic GIS Program Fair will take place Monday evening, August 4, in conjunction with the Map Gallery opening. The fair provides a forum for representatives from college and university academic GIS programs to discuss their educational offerings. Space is limited, so sign up early to ensure a place for your school or program. Send your inquiries to gisfair@esri.com.



Map Gallery and Multimedia Display

Submission Deadline: July 7

Each year, hundreds of users showcase their work in the Map Gallery and the multimedia map display. Participants* may enter their submissions in one of several categories and compete for an award. You are encouraged to submit entries as digital datasets to our map library, which will be accessible online before and after the conference. Many of the maps will be published in the annual *ESRI Map Book*. All other maps become part of ESRI's permanent collection. **And don't forget the multimedia map display.** Multimedia entries show the results of using ESRI software in a project or study. Examples include digital atlases, animation, and a series of maps detailing the steps of GIS projects.

Multimedia Map Display

Map Gallery multimedia entries portray the results of using ESRI technologies in a project or study but do not use ESRI software to run the presentation itself. Entry examples vary widely and in the past have included a digital atlas, map series, collection of animations, and slide show detailing the steps of GIS projects.

Visit www.esri.com/ucmaps for an online submission form. Send inquiries to ucmaps@esri.com or call 909-793-2853, extension 1-3347.

* You must be registered to attend the User Conference to participate in the Map Gallery.

User Software Applications Fair

Application Deadline: June 13

Packet Return Deadline: July 11

If you have developed an application/program using ESRI software or customized an ESRI software product to meet specific end-user requirements for your organization, please join us at the User Software Applications Fair. Submissions must be of a noncommercial nature.**

Fair entrants will be organized by application category, and the winners will be applications that make the best use of ESRI software (alone or in combination) in each category. Voting is limited to your fellow conference attendees.

For more information and an online application form, visit www.esri.com/ucfair. Application forms will be available through June 13, 2008. After submitting the online form, you will receive an information packet with all the details regarding the requirements for your entry. All entries, with their completed registration forms, are due no later than July 11.

** If your application is marketed commercially, we invite you to participate in the Exhibit Pavilion. E-mail uc@esri.com for details.



Be Part of the ESRI UC Plenary Session

Submission Deadline: June 20

Map Image Submissions

Share the accomplishments and scope of your work. Submit your map images for possible inclusion in Jack Dangermond's opening presentation at the ESRI UC Plenary Session. From analysis and decision making to communication and innovation, show your peers what you've been up to. Submit maps online at www.esri.com/plenaryimages.

Video Submissions

If you have a compelling 3D visualization project you would like to share, ESRI would be pleased to feature it in the conference's opening video, Monday, August 4. Send your videos to ucvideos@esri.com.

Send Us Your Pictures

As part of this year's opening presentation, we are including pictures of you in the field, at your computer, working with your maps, and more. Individual or group photos are acceptable. Send your pictures to smorasco@esri.com.

Activities

Register to Participate in an Activity

To participate in an activity, you must first register to attend the ESRI UC at www.esri.com/ucregistration. Be sure to keep your registration ID number on hand. Then go to www.esri.com/ucactivities and register to participate in any of the following activities:

- ♦ Golf Tournament (*Registration deadline: July 3*)
- ♦ Tennis Tournament (*Registration deadline: June 13*)
- ♦ 5K Fun Run/Walk (*Registration deadline: June 13*)
- ♦ GIS Kids Camp (*Registration deadline: June 13*)

Golf Tournament

Sunday, August 3

Torrey Pines Golf Club—North Course

- ♦ \$165 per player; includes greens fees, cart, and on-course games and awards
- ♦ Start Time: 8:00 AM, shotgun start
- ♦ Format: 2-Bset Balls of Foursome
- ♦ Limited to 40 players

To register, visit www.sangolf.com and click the ESRI link or call **760-944-6281**. The deadline for registration is July 3, 2008, or when the event is filled, whichever comes first. For additional information regarding the golf event, please contact

Vince Tully

San Diego Golf Events
7668 El Camino Real, #104-109, Carlsbad, CA 92009

Office: 760-944-6281, fax: 760-683-3016

E-mail: Vince@sangolf.com

Tennis Tournament

Tuesday and Wednesday, August 5 and 6

The tournament will take place at the Marriott Hotel & Marina tennis courts, located on level 4. The cost is \$30 per participant. Reservations will be on a first-come, first-served basis. The Marriott has rental equipment available, or you can bring your own racquet. It is the responsibility of players to make arrangements for or provide their own equipment.

5K Fun Run/Walk

Wednesday, August 6, 6:45 AM

Enjoy the fun of a flat and fast 5K run/walk course. The well-marked course will follow the waterfront through Embarcadero Park North and the boardwalk. Water stations will be provided. The start and finish lines will be clearly visible to enable spectators to cheer on their friends. The cost is \$30 per participant.



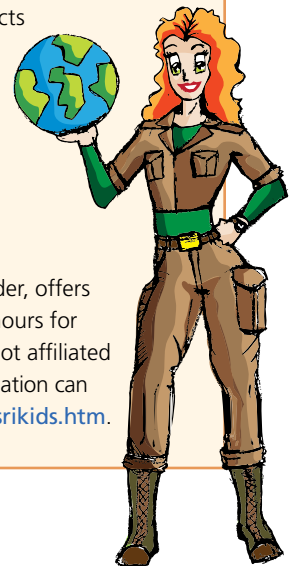
GIS Kids Camp

*Tuesday–Thursday,
August 5–7*

Marina—Salon D, Marriott

Cost: \$30 (includes snack)

GIS Kids Camp is a great way for your children to learn about GIS. ESRI staff and educators from around the world will offer special hands-on sessions. Your children will work through general computer skills, see an overview of GIS, and do specific projects with ESRI software. All classes will be held at the Marriott Hotel & Marina adjacent to the Convention Center. For a full list of offerings, visit www.esri.com/uckidscamp.



Child Care—KiddieCorp

KiddieCorp, a licensed day care provider, offers on-site child care during conference hours for children of attendees. KiddieCorp is not affiliated with ESRI or the ESRI UC. More information can be found at www.kiddiecorp.com/esrikids.htm.

Training Classes

Preconference and Postconference Training Classes

The following instructor-led training classes will be offered at the ESRI Learning Center in Redlands, California, during the weeks before and after the 2008 ESRI UC. Classes fill up quickly, so we recommend registering as early as possible. Please check our online, searchable class schedule at www.esri.com/training for course availability or contact the ESRI Learning Center at 909-793-2853, extension 1-1585. A completed registration form is required from each class participant; your registration will be processed on a first come, first served basis.

Registration information and an online form are available at www.esri.com/training

Preconference Classes • July 28–August 1 (Redlands)

July 28–29	<i>Introduction to ArcGIS I</i>
July 28–29	<i>Learning GIS Using ArcGIS Desktop</i>
July 28–30	<i>Building Geodatabases</i>
July 28–30	<i>Data Production and Editing Techniques</i>
July 30–31	<i>Creating and Editing Parcels with ArcGIS</i>
July 30–August 1	<i>Introduction to ArcGIS II</i>
July 31–August 1	<i>Introduction to the Multiuser Geodatabase</i>
July 31–August 1	<i>Introduction to Geoprocessing Scripts Using Python®</i>

August 4–8, ESRI International User Conference (San Diego)

Postconference Classes • August 11–15 (Redlands)

August 11–12	<i>Introduction to ArcGIS I</i>
August 11–12	<i>Introduction to ArcGIS Server</i>
August 11–13	<i>Advanced Analysis with ArcGIS</i>
August 11–13	<i>Data Management in the Multiuser Database</i>
August 13–15	<i>Cartography with ArcGIS</i>
August 13–15	<i>Introduction to ArcGIS II</i>
August 14–15	<i>ArcGIS Server Enterprise Configuration and Tuning for Oracle®</i>
August 14–15	<i>ArcGIS Server Enterprise Configuration and Tuning for SQL Server</i>

Note: Classes may be added, canceled, or rescheduled without notice according to demand or due to unforeseeable circumstances.

Registration ♦ Travel ♦ Hotel Information

Registration Deadline: June 13, 2008

To register, visit www.esri.com/ucregistration.

Conference Fees

- ♦ Standard ESRI UC Registration: **\$1,395**
- ♦ U.S. Federal Government: **\$995**
- ♦ Business Partners:
 - The first three registrants pay **\$995** each.
 - Subsequent registrants pay **\$1,395** each.
- ♦ Educational Institution: **\$495**
- ♦ Daily Conference Registration: **\$425** per day
- ♦ Exhibit Pavilion Only: **\$250***

**Exhibit Pavilion Only Registration—This year, we are offering the option to attend the Exhibit Pavilion and ESRI Showcase only for a registration fee of \$250. This option is only available to authorized ESRI software users. Exhibit Pavilion Only registration allows you access to the Exhibit Pavilion and ESRI Showcase in the Exhibit Hall Tuesday–Thursday. Sessions and other events are not included.*

Hotel Reservations

Our convenient online service allows you to submit your reservation requests through the ESRI Housing Bureau. A limited number of special room rates are available at participating conference hotels. Room reservations must be made before July 1, 2008. Rates are available for single- and double-occupancy rooms. Special room rates are not guaranteed if reservations are made after July 1, 2008, or if the room block has sold out. Visit www.esri.com/uchotels for an online Hotel Request form.

ESRI Housing Bureau

U.S./Canada Phone Number: **888-377-4576**
 International Phone Number: **909-793-2853**, extension **1-3153**
 E-mail: uchotelres@esri.com

Hours of Operation

8:00 AM–5:00 PM, Pacific Time, Monday–Friday
 (closed Saturday, Sunday, and all major U.S. holidays)

AMEX, MasterCard, Visa, Discover, and Diners Club are accepted.

Local Ground Transportation

Limousine, car rental, and shuttle bus services are available from all Southern California airports.

Trolley Service

The San Diego trolley system offers convenient transportation between hotels and the Convention Center. For more travel information, visit www.sdcommute.com/Rider_Information/trolley/trolleyMap.asp.

Rental Cars

ESRI has contracted with the following car rental companies to make rental cars available at discounted rates to conference participants. Please call the company you have selected and ask for the special ESRI conference rate. Your travel agent can also make these rental car arrangements for you, but be sure that the agent specifies the ESRI group number so you can receive the discounted rate.

Avis Rent-A-Car	
Toll-Free: 877-289-2611 Phone: 918-624-4298 Fax: 918-235-2583 (U.S.) Fax: 918-621-4814 (International)	Worldwide Discount Number: K019303
Budget Car and Truck Rental	
Toll-Free: 800-214-6092 Canada: 800-268-8900 Fax: 972-404-7772 International: Ask for Reservations*	Group Reservation Web Discount Number: V253937
Enterprise Rent-A-Car	
Toll-Free: 800-736-8222 (U.S. and Canada) Customer Code: 32U6728	Once you have entered the customer code, enter the letters ESRI for the PIN code.
Hertz Corporation	
Toll-Free: 800-654-2240 (U.S. and Canada) Toll-Free: 405-749-4434 (International)	Hertz CV Number: 016S0009
*Reservations Desk is not staffed 2:00 AM–6:00 AM central time.	

Confirmations: You will receive an ESRI housing request letter with an ID number within five to seven business days of receipt of your request. Another letter containing a hotel reservation confirmation number will be sent to you three to five weeks thereafter (as the conference approaches, this lead time will shorten). These ID/confirmation numbers will be different, so be sure to check both letters carefully for arrival- and departure-date accuracy. Your hotel-issued confirmation number should be the one referenced when speaking directly with the hotel. If you do not receive your confirmations within the allotted time frames, contact our Call Center at **909-793-2853**, extension **1-3153**, or uchotelres@esri.com.

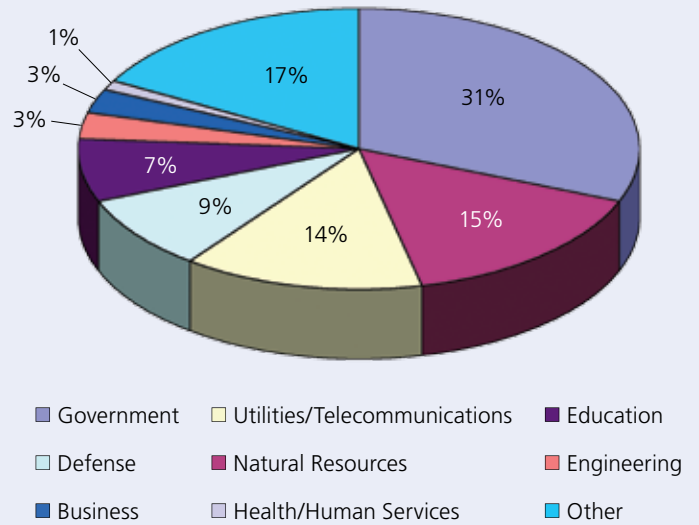
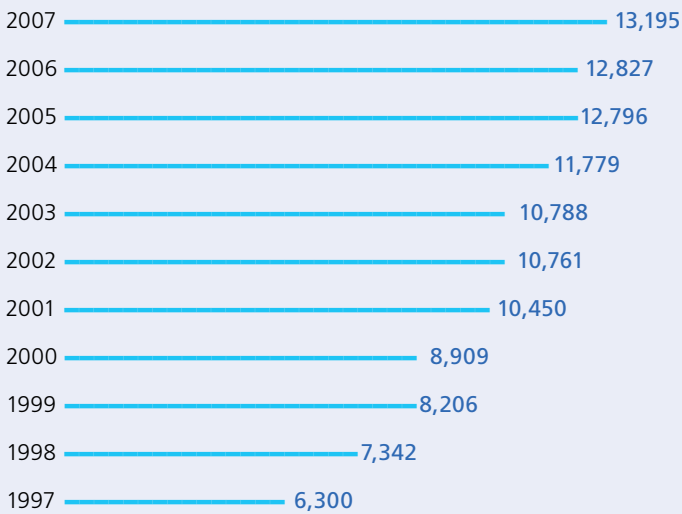
Hotel Cancellations: Cancellations and changes must be made directly with the ESRI Housing Bureau prior to July 1, 2008. After this date, contact the hotel directly.



Dates to Remember

- Printed Agenda and Advertising Deadline: **April 11, 2008**
- SIG and RUG Requests Deadline: **April 11, 2008**
- Academic GIS Program Fair Submission Deadline: **April 11, 2008**
- Student Assistantship Application Deadline: **May 9, 2008**
- Activities Registration Deadline: **June 13, 2008**
- Conference Registration Deadline: **June 13, 2008**
- User Software Applications Fair Application Deadline: **June 13, 2008**
- Golf Tournament Registration Deadline: **July 3, 2008**
- Map Gallery Submission Deadline: **July 7, 2008**
- User Software Applications Fair Packet Return Deadline: **July 11, 2008**
- Preconference Seminars: **August 2–3, 2008**
- Education User Conference: **August 2–5, 2008**
- Survey & Engineering GIS Summit: **August 2–5, 2008**
- Senior Executive Leadership Seminar: **August 3–5, 2008**
- ESRI User Conference: **August 4–8, 2008**

Conference Attendance History





ESRI
380 New York Street
Redlands, CA 92373-8100

Presorted
Standard
U.S. Postage
Paid
ESRI

My ESRI News keeps you connected
with GIS users and events in your area.
Sign up today at www.esri.com/myesrinews.

XXXXXX xxx?M2/08ai

2008

Twenty-eighth Annual ESRI International User Conference

August 4–8, 2008
San Diego, CA

www.esri.com/uc

