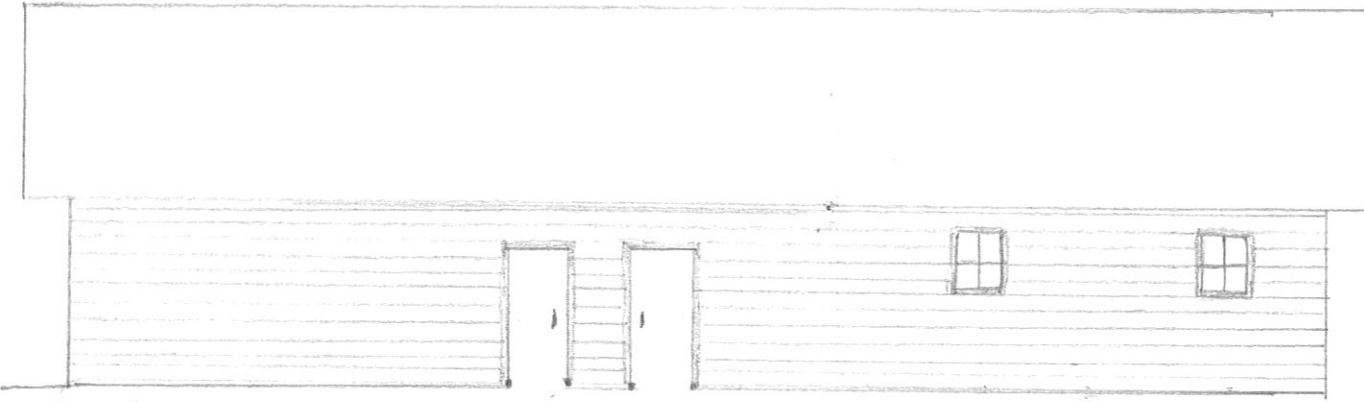


East Side

North - Alley Side



1" = 8'



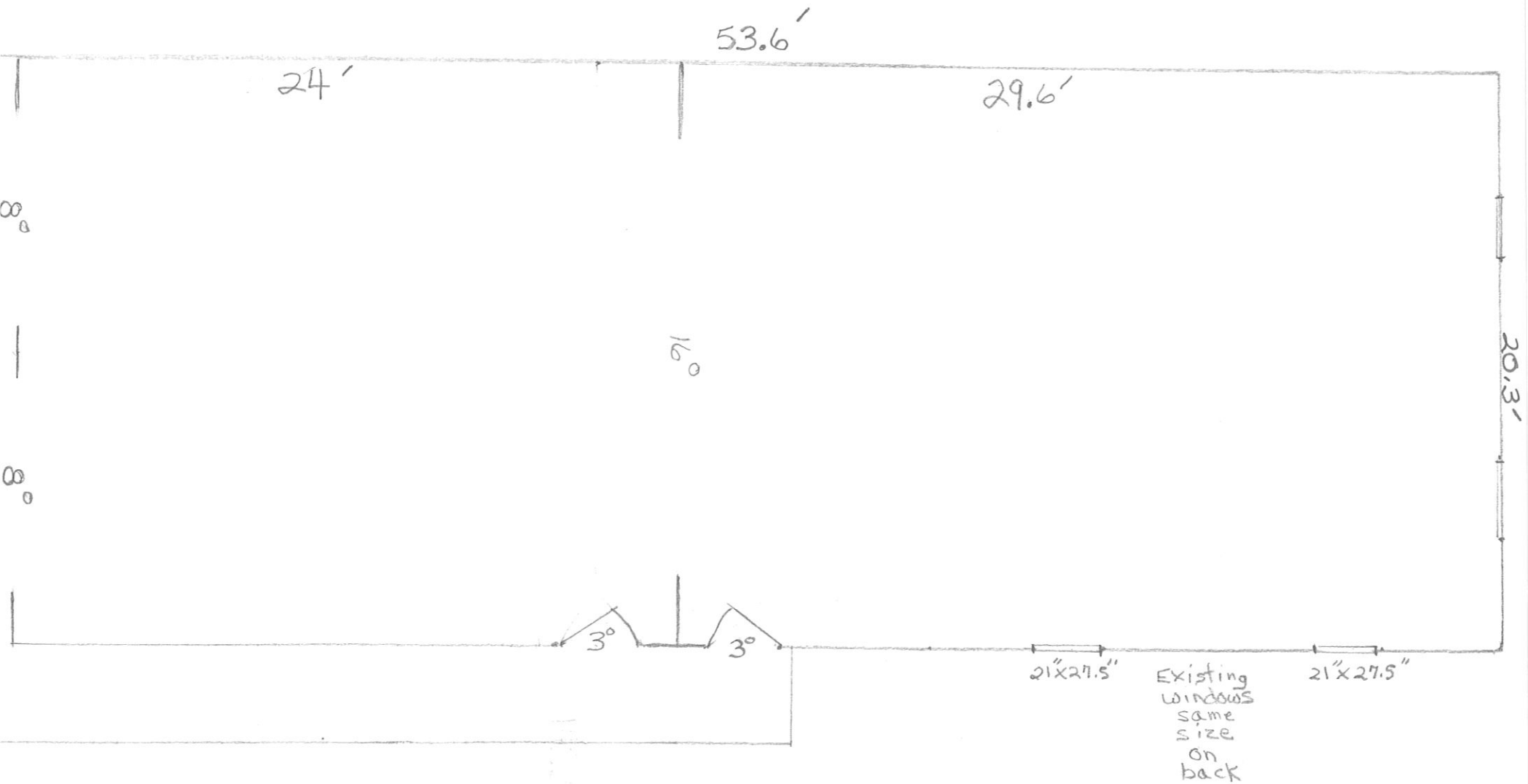
20.3"
2 - 8' x 7'
garage doors

1" = 4'

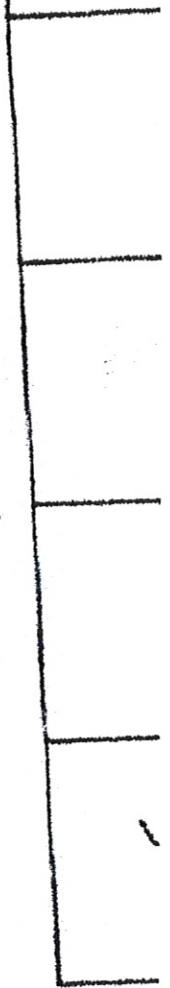
(St. Cloud) South-Driveway

1423-9th St.

1"=5'



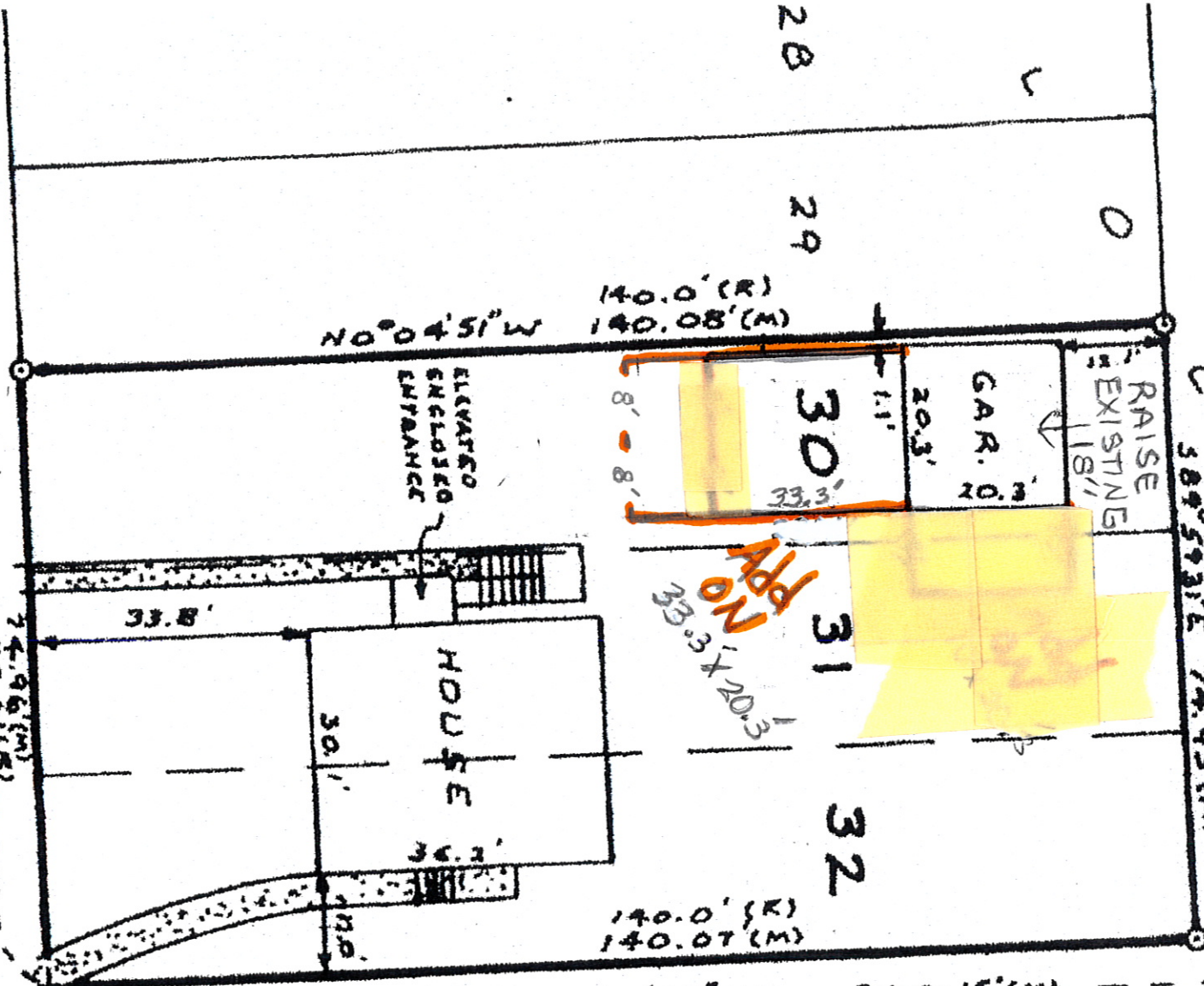
1423
4th
St.



ALLEY R.O.W. 20' WIDE

75.0' (M)
74.93' (M)

Approx. Scale (5)
1" = 20'
1423 9th St.



ST. CLOUD STREET

397.80' (M) EAST (ASSIGNED BEARING)
400.0' (R)

N0°04'51" W 140.0' (R) 140.08' (M)

ELEVATED ENCLOSED DRIVEWAY

HOUSE

GAR. 02

RAISE EXISTING 18"

30

31

32

140.0' (R) 140.07' (M)

N0°05'38" W

CHISELED IN CONE.

9th Street

97.1