

C:\Civil_3D\Projects\09-1592 Main Street Square\Sheet FILES\1592-LO2-PLANT01.dwg September 07, 2010 10:10am CEKenberger

PLANT SCHEDULE:

QUANTITY	PLAN SYMBOL & MARK	BOTANICAL NAME COMMON NAME	SIZE	TYPE	DETAIL
3	AF	ACER X FREEMANNII RED SUNSET MAPLE	4" CAL.	B & B	1/SD6.02
10	GT	GLEDITSIA TRIANCANTHOS 'SKYCOLE' SKYLINE HONEYLOCUST	4" CAL.	B & B	1/SD6.02
4	FN	FRAXINUS NIGRA 'FALL GOLD' FALL GOLD BLACK ASH	4" CAL.	B & B	1/SD6.02
10	BN	BETULA NIGRA 'HERITAGE' HERITAGE RIVER BIRCH	4" CAL.	B & B	1/SD6.02

PLANTING NOTES

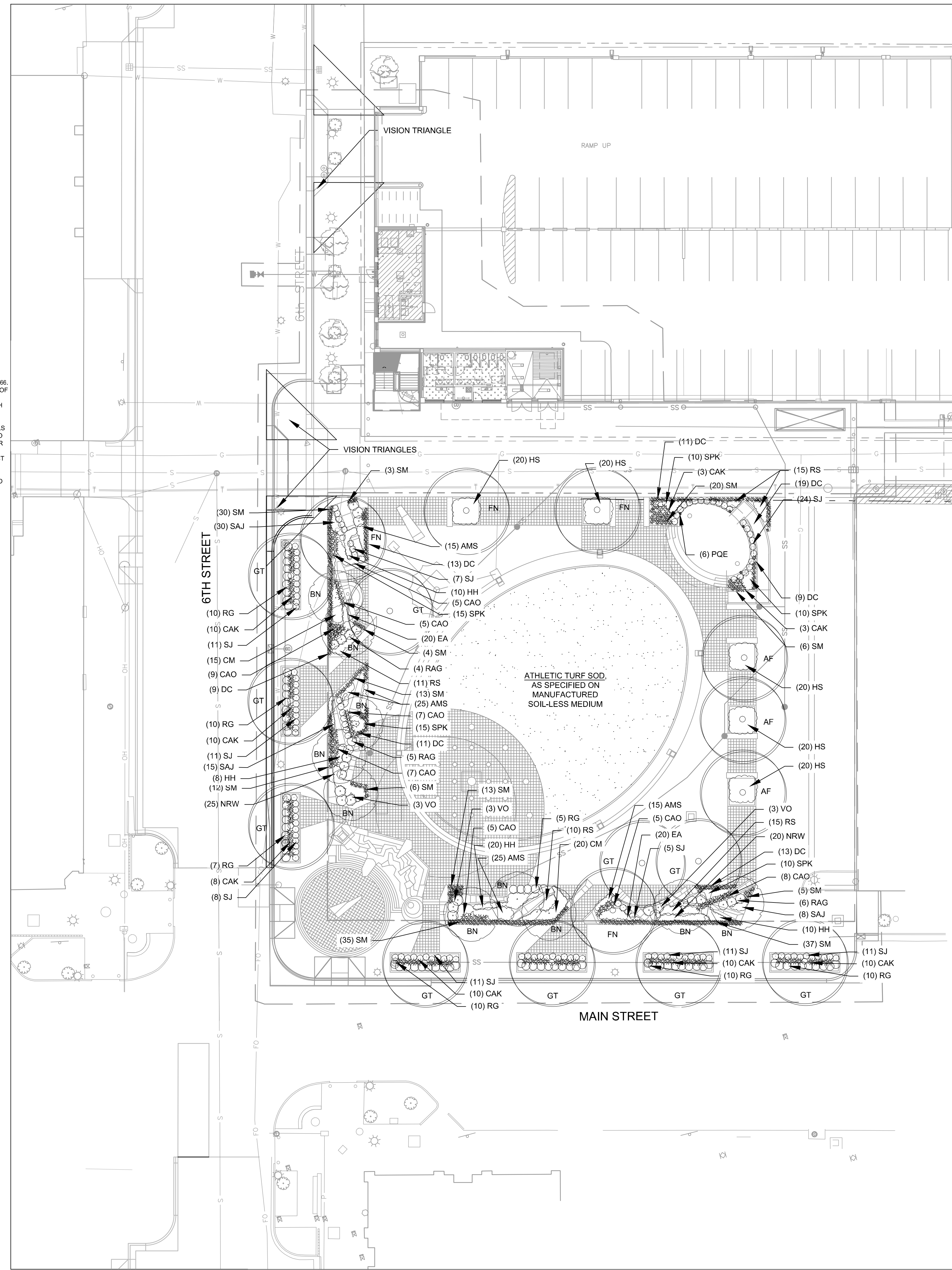
1. LANDSCAPE/IRRIGATION CONTRACTOR SHALL COORDINATE INSTALLATION OF ALL LANDSCAPE/IRRIGATION MATERIALS WITH GENERAL CONTRACTOR.
2. CONTRACTOR TO EVALUATE EXISTING SITE CONDITIONS AND REMEDY AS REQUIRED TO PROVIDE FOR HEALTHY PLANT GROWTH AND MITIGATE UNSIGHTLY CONDITIONS.
3. CONTRACTOR TO COORDINATE ALL CONSTRUCTION ACTIVITIES WITH OTHER TRADES.
4. CONTRACTOR TO SUPPLY AND INSTALL TOPSOIL IN ALL AREAS TO A DEPTH OF 4" FOR TURF AND NATURAL GRASS AREAS AND 12" FOR ALL PLANTING BEDS. SCARIFY SOIL PROFILE TO 12" DEPTH TO LOOSEN SOIL.
5. ALL PLANT MATERIAL SHALL BE INSTALLED AS DETAILED, SEE SHEET L3.02. IF NOT SHOWN, INSTALL ACCORDING TO SOUTH DAKOTA ASSOCIATION OF NURSERYMEN.
6. CONTRACTOR SHALL VERIFY ALL PLANT QUANTITIES. THE ILLUSTRATED LOCATION SHALL DICTATE COUNT.
7. DURING INSTALLATION OF PLANT MATERIAL AND IRRIGATION, CONTRACTOR SHALL KEEP ALL WORK AREAS AND WALKING AND DRIVEWAY SURFACES CLEAN OF DEBRIS. PROTECT ALL PLANT AND IRRIGATION MATERIALS FROM DAMAGE DUE TO LANDSCAPE OPERATIONS OR ACTIVITIES BY OTHER CONTRACTORS AND TRADES. MAINTAIN PROTECTION DURING INSTALLATION AND MAINTENANCE PERIODS. TREAT, REPAIR OR REPLACE ANY DAMAGED PLANTINGS, MATERIALS OR IRRIGATION EQUIPMENT IMMEDIATELY.
8. IN THE EVENT OF ANY DISCREPANCIES, NOTIFY THE LANDSCAPE ARCHITECT IMMEDIATELY.
9. NO PLANT SUBSTITUTIONS WILL BE ALLOWED WITHOUT WRITTEN CONSENT FROM THE LANDSCAPE ARCHITECT.
10. ALL BEDS, BERMS AND PARKING LOT ISLANDS TO BE MULCHED WITH CLEAN, 1.5"-3" WASHED RIVER ROCK OR SHREDDED BARK MULCH (DEPENDENT ON LOCATION). SUBMIT SAMPLE OF MULCH MATERIALS TO LANDSCAPE ARCHITECT FOR REVIEW AND APPROVAL PRIOR TO INSTALLATION.
11. 1.5"-3" RIVER ROCK MULCH OR SHREDDED HARDWOOD MULCH TO BE PLACED OVER TYFAR LANDSCAPE FABRIC ON ALL PLANT BED AREAS AS INDICATED ON PLAN. (SUBMIT SAMPLES FOR SELECTION BY LANDSCAPE ARCHITECT).
12. WEED BARRIER TO BE "TYPAR 3201" AS MANUFACTURED BY LIND INDUSTRIAL FABRICS INC. GEOTEXTILE DIVISION. WEBSITE: WWW.LINDIND.COM. 1(800)543-9966. ALTERNATE PRODUCTS ACCEPTED WITH SUBMITTAL, REVIEW AND APPROVAL OF LANDSCAPE ARCHITECT.
13. LANDSCAPE ARCHITECT TO HAND SELECT PLANT MATERIALS TOGETHER WITH CONTRACTOR. CONTRACTOR TO NOTIFY LANDSCAPE ARCHITECT 1 WEEK IN ADVANCE PRIOR TO ORDERING PLANTS TO SET UP PLANT SELECTION TOUR.
14. LANDSCAPE ARCHITECT TO FIELD LOCATE PLAN MATERIALS ON-SITE WITH LANDSCAPE CONTRACTOR. CONTRACTOR TO NOTIFY LANDSCAPE ARCHITECT 1 WEEK IN ADVANCE PRIOR TO PLACEMENT OF PLANT MATERIALS.
15. SUBMIT TURF GRASS SEED MIX TO LANDSCAPE ARCHITECT FOR REVIEW AND APPROVAL PRIOR TO SEEDING.
16. LANDSCAPE CONTRACTOR TO LOCATE AND PROTECT ALL EXISTING ELEMENTS AND UTILITIES DURING PLANTING AND/OR INSTALLATION.

QUANTITY	PLAN SYMBOL & MARK	BOTANICAL NAME COMMON NAME	SIZE	TYPE	DETAIL
15	RAG	RIBES ALPINUM 'GREEN MOUND' DWARF ALPINE CURRANT	2 GAL.	CNTR.	2/SD6.02
9	VO	VIBURNUM OPULUS 'NANUM' DWARF EUROPEAN CRANBERRYBUSH	2 GAL.	CNTR.	2/SD6.02
102	SJ	SPIREA JAPONICA 'MAGIC CARPET' MAGIC CARPET SPIREA	2 GAL.	CNTR.	2/SD6.02
64	RG	RHUS AROMATICA 'GROW LOW' GROW LOW SUMAC	2 GAL.	CNTR.	2/SD6.02
184	* SM	SISYRINCHIUM MONTANUM BLUE EYED GRASS	2 GAL.	CNTR.	4/SD6.02
66	* CAK	CALAMAGROSTIS X ACUTIFLORA 'KARL FOERSTER' FEATHER REED GRASS	2 GAL.	CNTR.	4/SD6.02
51	* CAO	CALAMAGROSTIS X ACUTIFLORA 'OVERDAM' OVERDAM FEATHER REED GRASS	2 GAL.	CNTR.	4/SD6.02
85	* DC	DESCHAMPسيا CAESPITOSA TUFTED HAIR GRASS	2 GAL.	CNTR.	4/SD6.02
SF		PERENNIALS AND BEDDING PLANTS- (SEE PLAN FOR TYPES)	18" OC QT POTS	CNTR.	4/SD6.02
70	AMS	ACHILLEA MILLEFOLIUM 'SUMMER PASTEL' SUMMER PASTELS YARROW	1 GAL.	CNTR.	4/SD6.02
53	SAJ	SEDUM X AUTUMN JOY AUTUMN JOY SEDUM	1 GAL.	CNTR.	4/SD6.02
35	CM	CENTAUREA MONTANA MOUNTAIN BLUET	1 GAL.	CNTR.	4/SD6.02
40	EA	ECHINACEA 'AFTER MIDNIGHT' AFTER MIDNIGHT CONEFLOWER	1 GAL.	CNTR.	4/SD6.02
48	HH	HELIOPSIS HELIANTHOIDES 'SUMMER FUN' FALSE SUNFLOWER	1 GAL.	CNTR.	4/SD6.02
100	HS	HEMEROCALLIS 'STELLA D ORO' DAYLILY	1 GAL.	CNTR.	4/SD6.02
60	SPK	LIATRIS SPICATA 'KOBOLD' DWARF GAYFEATHER	1 GAL.	CNTR.	4/SD6.02
45	NRW	NEPETA RACEMOSA 'WALKER'S LOW' WALKER'S LOW CATMINT	1 GAL.	CNTR.	4/SD6.02
51	RS	PEROVSKIA ATRIPLICIFOLIA RUSSIAN SAGE	1 GAL.	CNTR.	4/SD6.02

NOTE: SHREDDED HARDWOOD MULCH IN TREE RINGS & PERENNIAL BEDS AS SHOWN IN DETAILS

QUANTITY	PLAN SYMBOL & MARK	BOTANICAL NAME COMMON NAME	SIZE	TYPE
5,451.14 SF		TURF: SOD AS SPECIFIED	1 GAL.	CNTR.

BEFORE ANY DIGGING-CONTRACTOR TO LOCATE ALL EXISTING UTILITIES.



RUNDELL ERNSTBERGER ASSOCIATES, LLC
 Land Planning + Urban Design + Landscape Architecture
 611 W Main Street, Suite 201, Louisville, KY 40202
 TE [502] 561.9676 FX [502] 561.9076
 E-mail: realouisville@reassoc.com www.reassoc.com
 additional offices in:
 Indianapolis, IN | Muncie, IN

PREPARED FOR:
City of Rapid City
 Public Works Department
 300 Sixth Street, Rapid City, SD 57701
 TE [605] 394-4165 FX [605] 355-3083
Destination Rapid City
 606 Main Street, Rapid City, SD 57701
 TE [605] 716-7979 FX [605] 341-6415

CONSULTANTS:
FourFront Design, Inc.
 Architecture and Civil Engineering
 517 Seventh Street
 Rapid City, SD 57701
 TE [605] 342-9470 FX [605] 342-2377
Skyline Engineering, LLC
 Electrical and Mechanical Engineering
 615 12th Street
 Rapid City, SD 57701
 TE [605] 737-3830 FX [605] 737-3859
Albertson Engineering, Inc.
 Structural Engineering
 3202 W Main Street, Suite C
 Rapid City, SD 57702
 TE [605] 343.9606 FX [605] 341.7395

PROJECT:
**Main Street Square
 Site Development
 Rapid City, South Dakota**

North
 SCALE: 1"=20'

NO.	BY	DESCRIPTION	DATE
—	REA	100% CONSTRUCTION DRAWINGS REVIEW SET	9/08/10

COPYRIGHT NOTICE:
 THE CONCEPTS, IDEAS, DESIGNS, PLANS, AND DETAILS AS SHOWN ON THIS DOCUMENT ARE THE SOLE PROPERTY OF RUNDELL ERNSTBERGER ASSOCIATES, LLC AND WERE CREATED, DEVELOPED, AND PREPARED FOR USE ON THIS SPECIFIC PROJECT. NONE OF THE CONCEPTS, IDEAS, DESIGNS, PLANS, AND DETAILS SHALL BE USED BY ANY PERSON, FIRM OR CORPORATION FOR ANY PURPOSE WHATSOEVER, WITHOUT THE EXPRESSED WRITTEN CONSENT OF RUNDELL ERNSTBERGER ASSOCIATES, LLC. THE OWNER/CLIENT SHALL BE PERMITTED TO RETAIN COPIES FOR INFORMATION AND REFERENCE IN CONNECTION WITH THIS PROJECT.

DRAWING NAME:
Planting Plan
 CERTIFICATION:
 100% CDs
OWNER REVIEW SET
 City #:
 Project No.:
 Date:
 Drawn by:
 Checked by:
 File:
 DRAWING #:
 PR2010-1901
 091131
 Sept. 8, 2010
 CME
 EAH
 1592-L02-PLANT01.dwg
SD 6.01