

RUNDELL ERNSTBERGER ASSOCIATES, LLC
 Land Planning + Urban Design + Landscape Architecture
 611 W Main Street, Suite 201, Louisville, KY 40202
 TE [502] 561.8676 FX [502] 561.9076
 E-mail: re@runnellernstberger.com
 www.reasite.com

additional offices in:
 Indianapolis, IN | Muncie, IN

PREPARED FOR:

City of Rapid City
 Public Works Department
 300 Sixth Street, Rapid City, SD 57701
 TE [605] 394-4165 FX [605] 355-3083

Destination Rapid City
 606 Main Street, Rapid City, SD 57701
 TE [605] 716-7979 FX [605] 341-6415

CONSULTANTS:

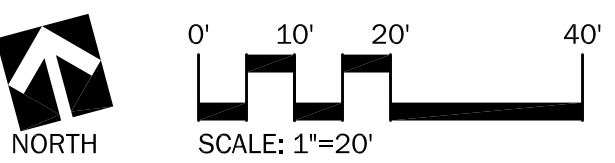
FourFront Design, Inc.
 Architecture and Civil Engineering
 517 Seventh Street
 Rapid City, SD 57701
 TE [605] 342-9470 FX [605] 342-2377

Skyline Engineering, LLC
 Electrical and Mechanical Engineering
 615 12th Street
 Rapid City, SD 57701
 TE [605] 737-3830 FX [605] 737-3859

Albertson Engineering, Inc.
 Structural Engineering
 3202 W Main Street, Suite C
 Rapid City, SD 57702
 TE [605] 343.9606 FX [605] 341.7395

PROJECT:

**Main Street Square
 Site Development
 Rapid City, South Dakota**



REVISIONS:			
NO.	BY	DESCRIPTION	DATE
1	REA	100% CONSTRUCTION DRAWINGS REVIEW SET	9/08/10

COPYRIGHT NOTICE:
 THE CONCEPTS, IDEAS, DESIGNS, PLANS, AND DETAILS AS SHOWN ON THIS DOCUMENT ARE THE SOLE PROPERTY OF RUNDELL ERNSTBERGER ASSOCIATES, LLC AND WERE CREATED, DEVELOPED, AND PRESENTED FOR USE ON THIS SPECIFIC PROJECT. NONE OF THE CONCEPTS, IDEAS, DESIGNS, PLANS, AND DETAILS SHALL BE USED BY ANY PERSON, FIRM, OR CORPORATION FOR ANY PURPOSE WHATSOEVER, WITHOUT THE EXPRESSED WRITTEN CONSENT OF RUNDELL ERNSTBERGER ASSOCIATES, LLC. THE OWNER/CIENT SHALL BE PERMITTED TO RETAIN COPIES FOR INFORMATION AND REFERENCE IN CONNECTION WITH THIS PROJECT.

DRAWING NAME: **Site Layout Keynote Plan**

CERTIFICATION: **100% CDs OWNER REVIEW SET**

City #: PR2010-1901
 Project No.: 091131
 Date: Sept. 8, 2010
 Drawn by: PMA
 Checked by: DDR
 File: 1131_SD3.10.dwg

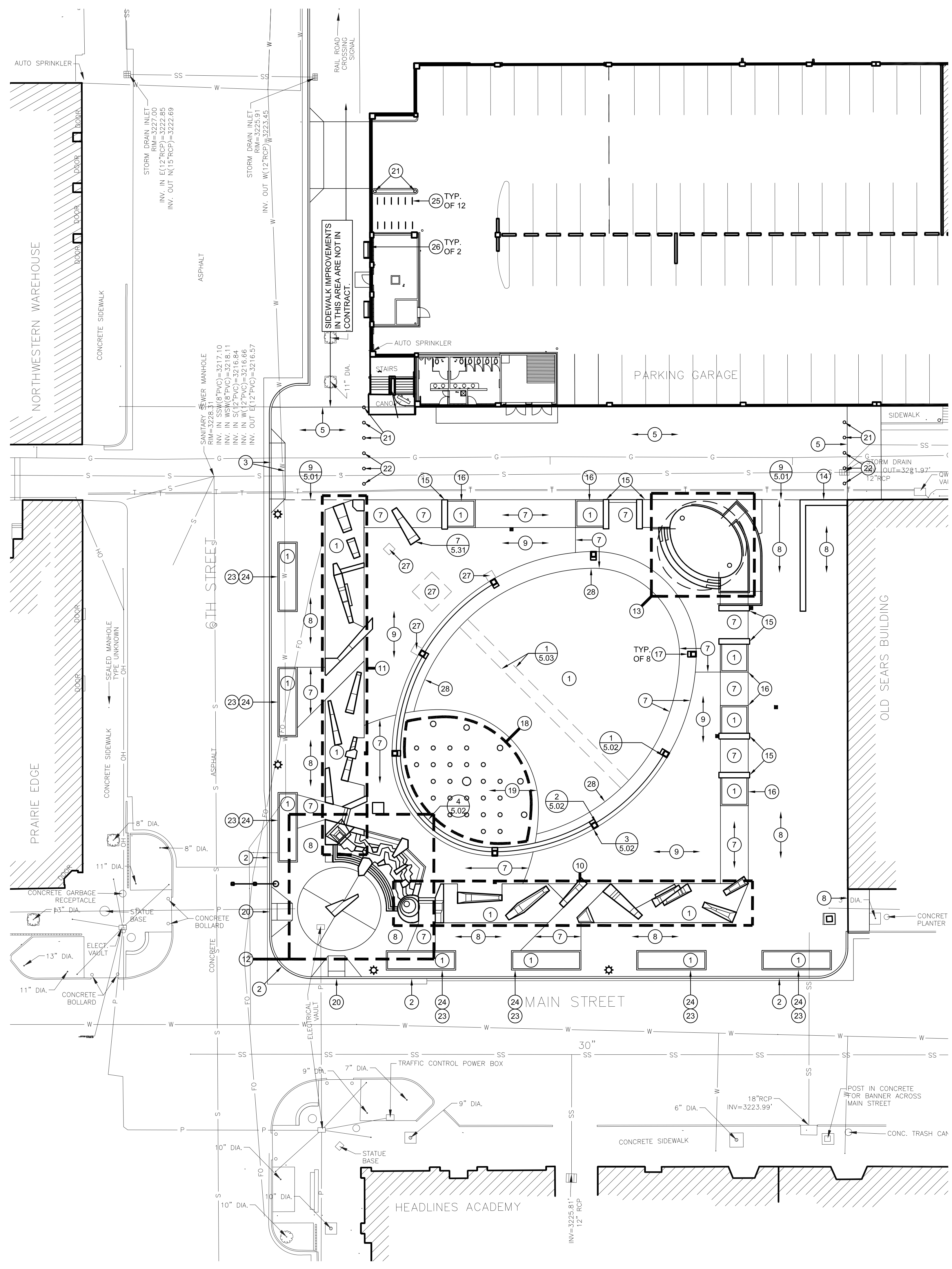
SD 3.10

LAYOUT GENERAL NOTES:

1. SITE LAYOUT DATA, INCLUDING COORDINATE POINTS, IS BASED ON A SURVEY PERFORMED BY FOURFRONT DESIGN, INC. REFER TO SD 1.01 FOR HORIZONTAL LAYOUT CONTROL POINTS. REPORT ANY DISCREPANCIES BETWEEN PLANS AND FIELD CONDITIONS TO OWNER AND LANDSCAPE ARCHITECT IMMEDIATELY.
2. UNLESS NOTED OTHERWISE, ALL DIMENSIONS ARE TO THE FOLLOWING: FACE OF WALL, FACE OF BUILDING, FACE OF GUTTER, EDGE OF PAVEMENT, CENTERLINE OF PAVEMENT
3. ALL EDGES OF PAVEMENTS ARE TO BE STRAIGHT (OR OF CONSISTENT RADIUS IN THE CASE OF CURVES) AS SHOWN HEREON; NO UNSPECIFIED TANGENTS OR KINKS WILL BE APPROVED.
4. ALL CONSTRUCTION LAYOUT STAKING IS TO BE PERFORMED BY A LAND SURVEYOR OR PROFESSIONAL ENGINEER REGISTERED IN THE STATE OF SOUTH DAKOTA. TO FACILITATE ACCURACY IN CONSTRUCTION STAKING, UPON WRITTEN REQUEST FROM CONTRACTOR, A CD CONTAINING THE ELECTRONIC DATA COMPRISING THESE SITE DEVELOPMENT DRAWINGS WILL BE FORWARDED FROM THE LANDSCAPE ARCHITECT TO THE LAND SURVEYOR OR PROFESSIONAL ENGINEER EMPLOYED TO PERFORM CONSTRUCTION STAKING.
5. IN ORDER TO MAINTAIN THE INTEGRITY OF HORIZONTAL AND VERTICAL CONTROL FOR THE SITE, THE SURVEYOR OR PROFESSIONAL ENGINEER EMPLOYED BY THE CONTRACTOR TO PERFORM CONSTRUCTION LAYOUT STAKING SHALL SET AND PROTECT ADDITIONAL TRAVERSE POINTS OUTSIDE THE AREAS OF CONSTRUCTION ACTIVITY.
6. AS SOME OF THE HORIZONTAL CONTROL POINTS SHOWN ON THESE PLANS AS EXISTING MAY HAVE BEEN REMOVED OR DAMAGED SINCE THEY WERE SET, THE CONTRACTOR SHALL, DURING THE BIDDING PROCESS, VERIFY THE EXISTENCE AND INTEGRITY OF THE HORIZONTAL CONTROL POINTS SHOWN HEREON. THE CONTRACTOR SHALL INCLUDE ANY WORK NECESSARY TO ESTABLISH RELIABLE LAYOUT CONTROL FOR THE PROJECT IN THE BID.
7. REFER TO SHEET SD 4.00-SD 4.03 SITE GRADING AND ELEVATION PLANS FOR VERTICAL LAYOUT DATA.

LAYOUT KEYNOTES:

- 1 PLANT BED OR LAWN AREA REFER TO SHEET SD 6.01
- 2 CONCRETE CURB AND GUTTER REFER TO CIVIL LAYOUT PLAN
- 3 CONCRETE APRON REFER TO CIVIL LAYOUT PLAN
- 4 CONCRETE PAVEMENT, VEHICULAR REFER TO CIVIL LAYOUT PLAN
- 5 BRICK PAVEMENT, VEHICULAR REFER TO DETAIL 3, SHEET SD 5.01
- 6 CONCRETE SIDEWALK REFER TO CIVIL LAYOUT PLAN
- 7 PRECAST PAVERS ON SUBSLAB REFER TO DETAIL 5, SHEET SD 5.01
- 8 BRICK PAVERS ON SUBSLAB REFER TO DETAIL 4, SHEET SD 5.01
- 9 CRUSHED GRANITE PAVEMENT REFER TO DETAIL 7, SHEET SD 5.01
- 10 BADLANDS STONE TAPESTRY REFER TO PLAN ENLARGEMENT, SHEET SD 3.20
- 11 BLACK HILLS STONE TAPESTRY REFER TO PLAN ENLARGEMENT, SHEET SD 3.20
- 12 BELVEDERE AND CASCADE FOUNTAIN REFER TO PLAN ENLARGEMENT, SHEET SD 3.20
- 13 STAGE & RAMP REFER TO PLAN ENLARGEMENT, SHEET SD 3.20
- 14 RETAINING WALL AT SEARS BUILDING REFER TO DETAIL 1, SHEET SD 5.04
- 15 SEATWALL REFER TO DETAIL 6, SHEET SD 5.04
- 16 PLANTER CURB REFER TO DETAIL 10, SHEET SD 5.01
- 17 GRANITE LIGHT POLE PIER REFER TO DETAIL 5, SHEET SD 5.02
- 18 INTERACTIVE FOUNTAIN REFER TO FOUNTAIN SHEETS
- 19 SLAB PAVERS AND FOUNTAIN REFER TO DETAIL 6, SHEET SD 5.01
- 20 CURB RAMP REFER TO CIVIL LAYOUT PLAN
- 21 DECORATIVE BOLLARD, EMBEDDED REFER TO DETAIL 17, SHEET SD 5.01
- 22 DECORATIVE BOLLARD, REMOVABLE REFER TO DETAIL 16, SHEET SD 5.01
- 23 PLANTER FENCE REFER TO DETAIL 1, SHEET SD 5.05
- 24 PLANTER CURB @ R.O.W. REFER TO DETAIL 11, SHEET SD 5.01
- 25 BIKE LOOP REFER TO DETAIL 15, SHEET SD 5.01
- 26 BENCH REFER TO SPECIFICATIONS
- 27 HOLIDAY TREE FOUNDATIONS (4), REFER TO STRUCTURAL PLANS.
- 28 GRADE BEAM AT LAWN EDGE REFER TO DETAIL 1, SHEET SD 5.01



SD 3.10