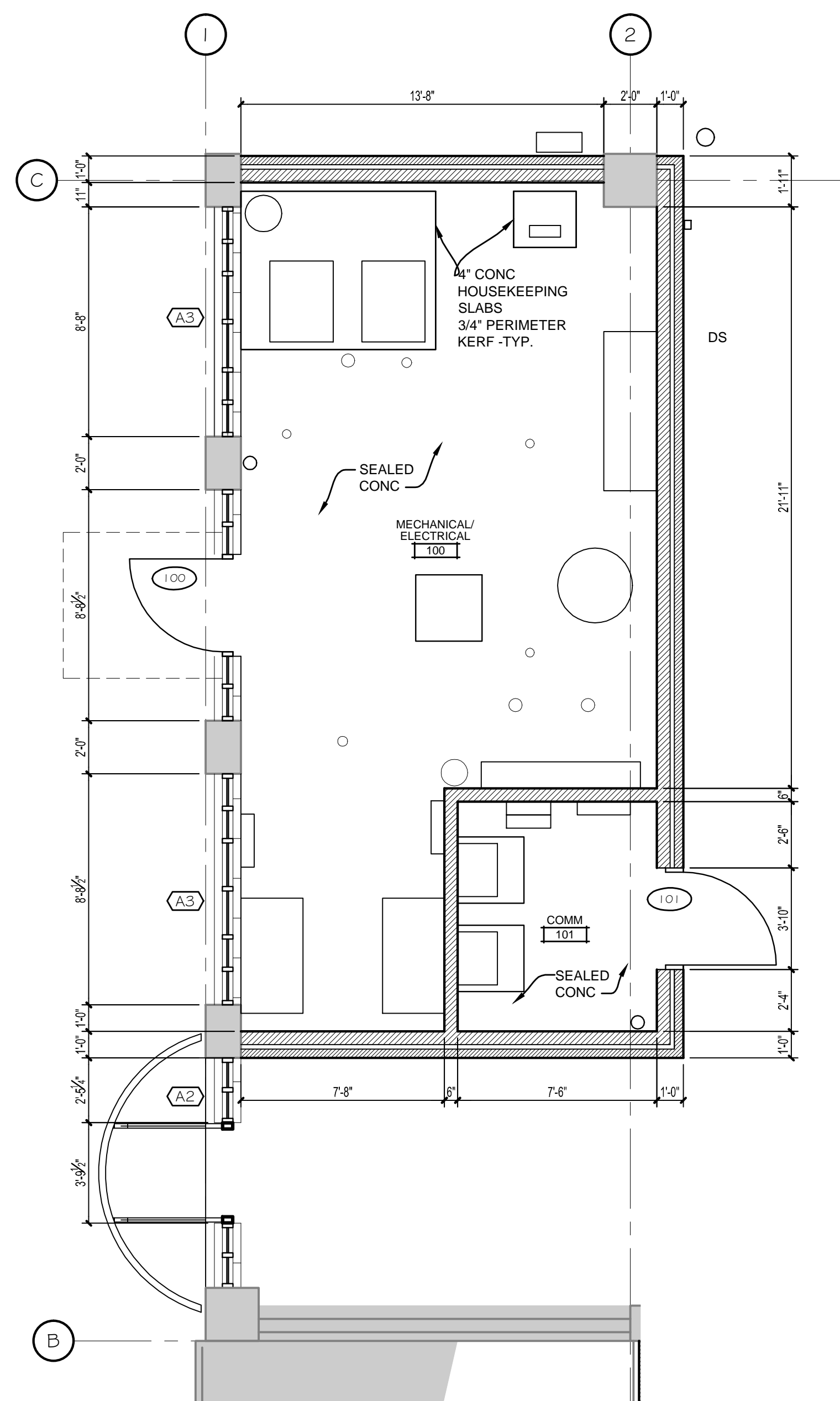
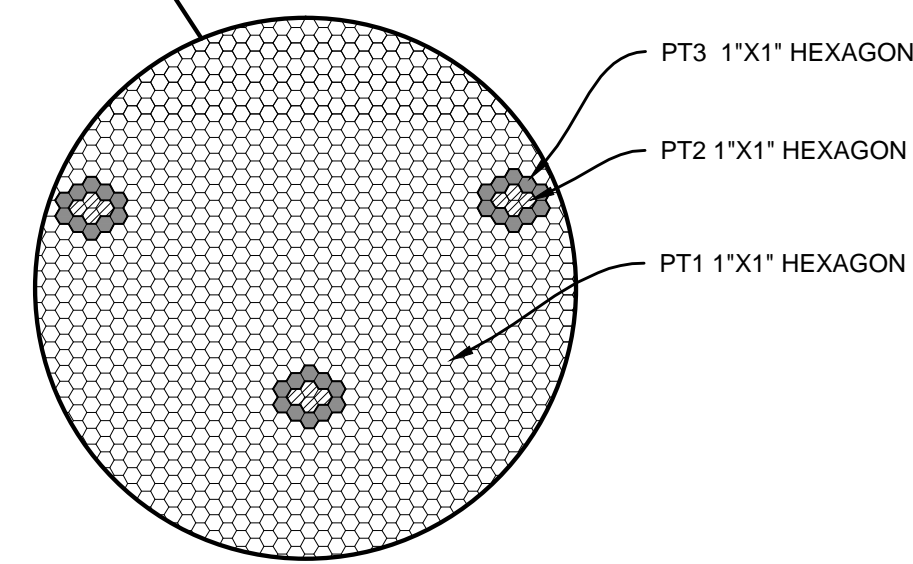


**1 ENLARGED TOILET/MAINTENANCE VEHICLE PLAN**  
 A5.00 1/4" = 1'-0"

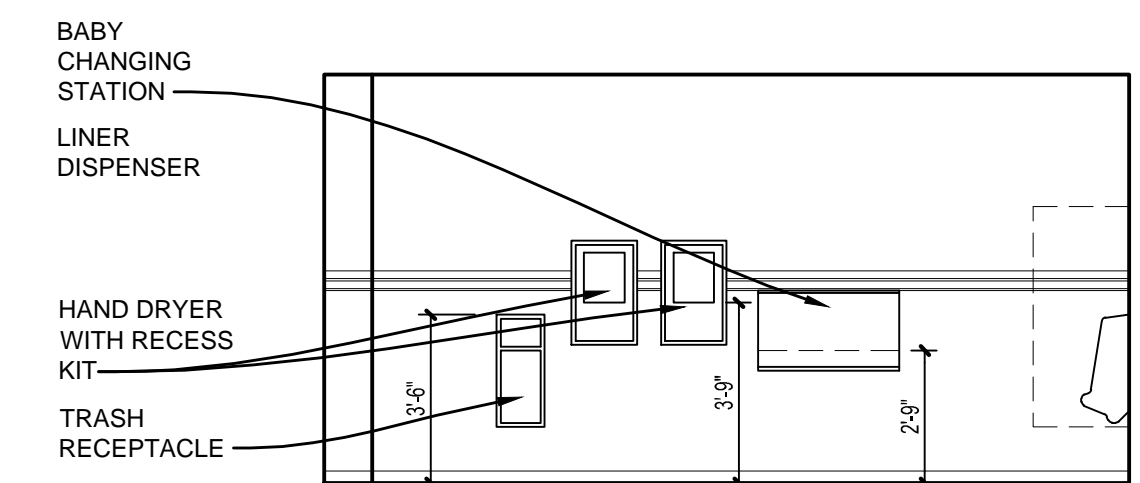


**12 ENLARGED MECHANICAL/ELECTRICAL PLAN**  
 A5.00 1/4" = 1'-0"

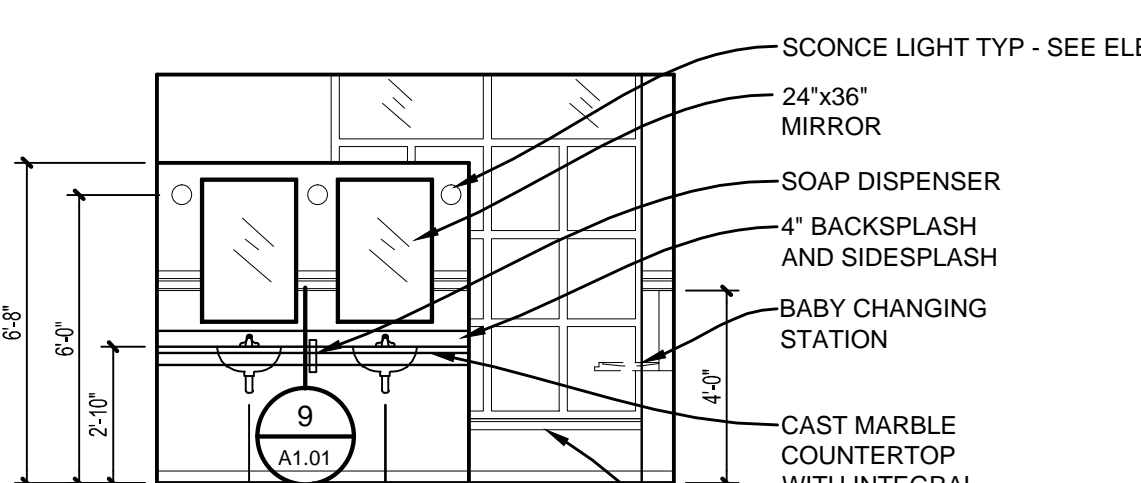
GENERAL NOTES:  
 1. SEE FLOOR PLAN SHEET A1.00 FOR WALL TYPES.



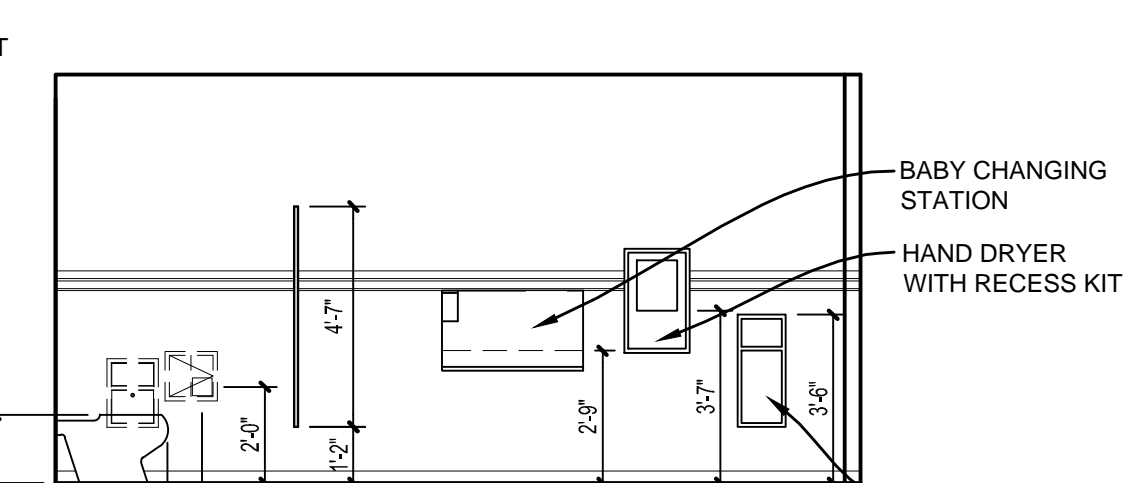
**FLOOR FINISH DETAIL**  
 1" = 1'-0"



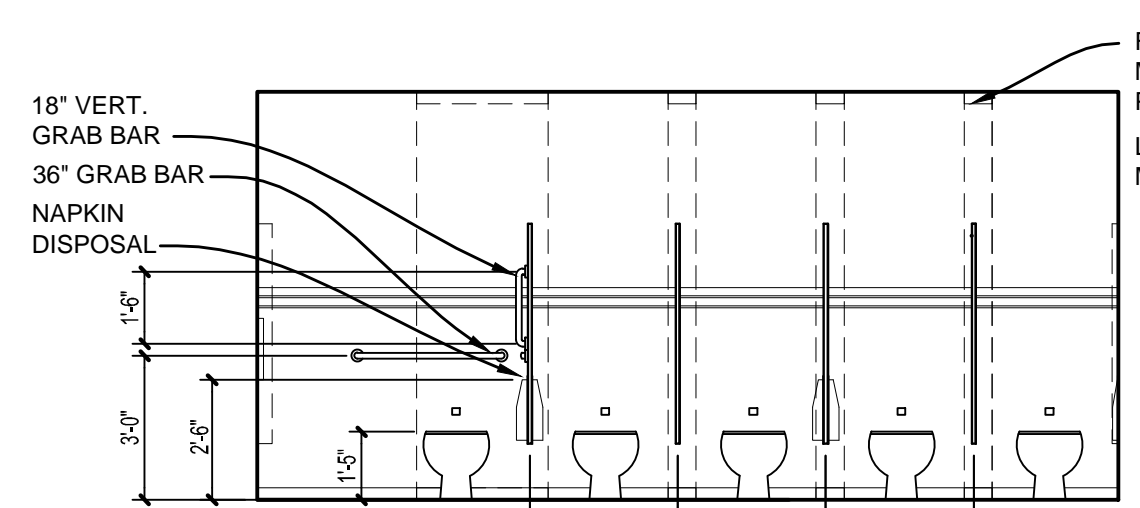
**6 INTERIOR ELEVATIONS**  
 A5.00 1/4" = 1'-0"



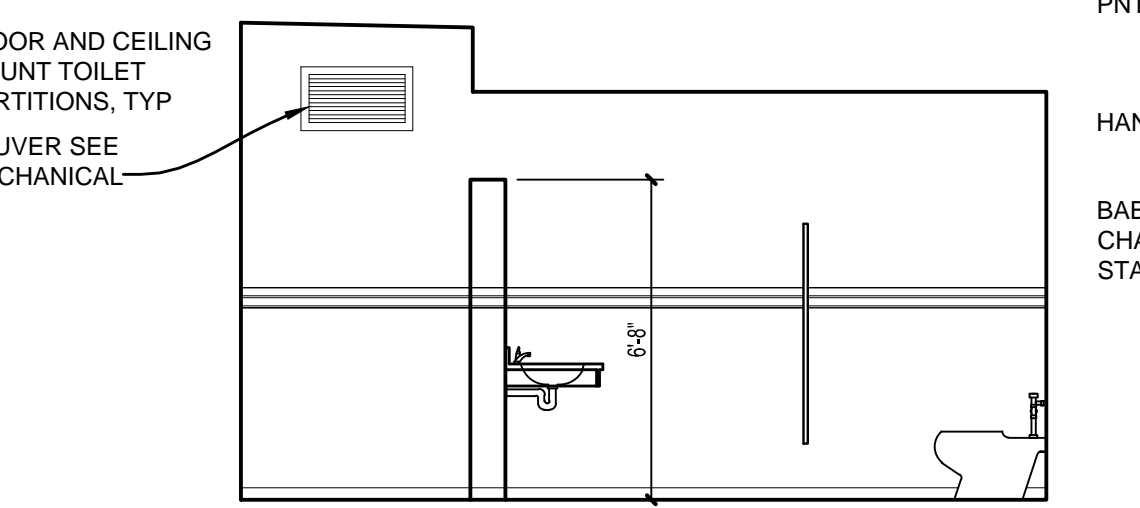
**7 INTERIOR ELEVATIONS**  
 A5.00 1/4" = 1'-0"



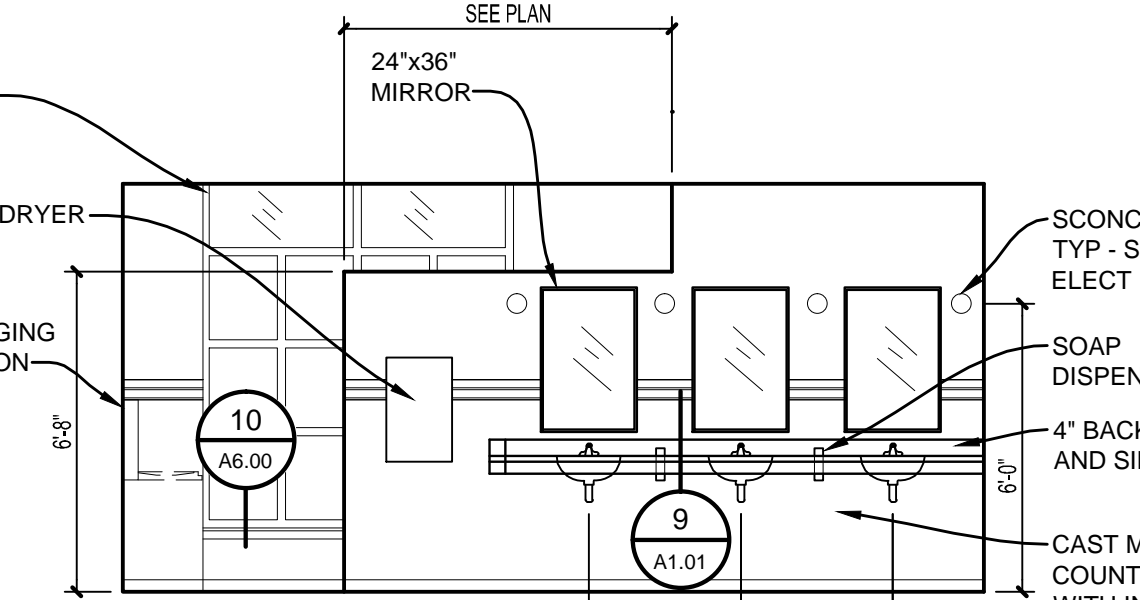
**8 INTERIOR ELEVATIONS**  
 A5.00 1/4" = 1'-0"



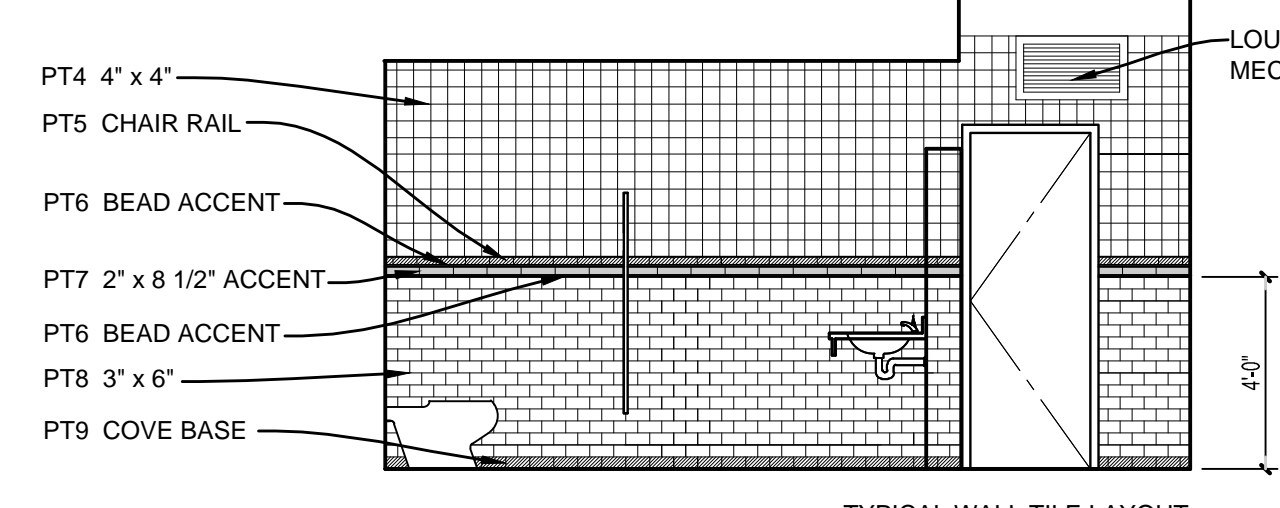
**9 INTERIOR ELEVATIONS**  
 A5.00 1/4" = 1'-0"



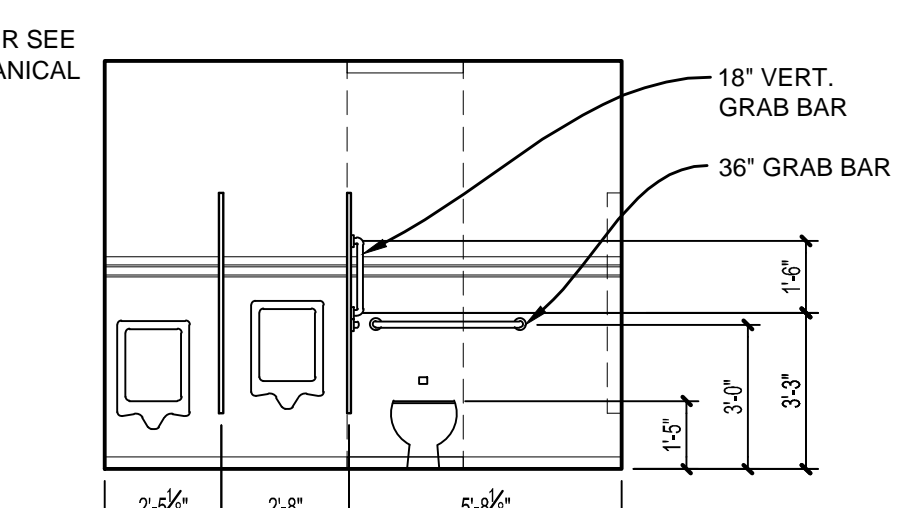
**10 INTERIOR ELEVATIONS**  
 A5.00 1/4" = 1'-0"



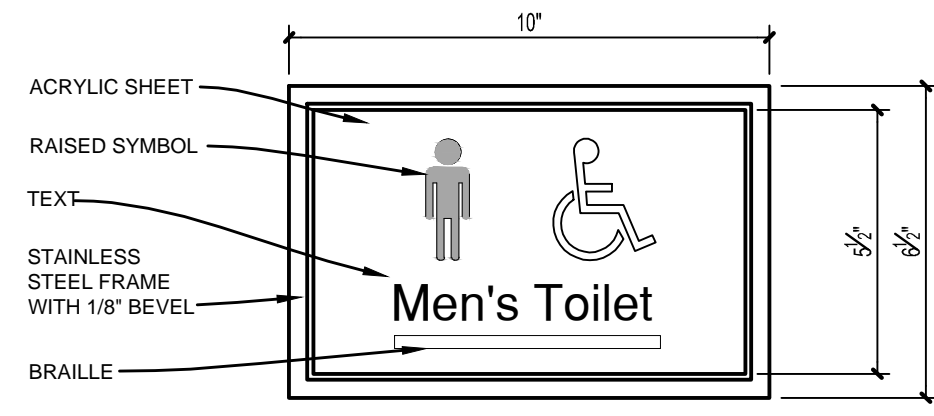
**11 INTERIOR ELEVATIONS**  
 A5.00 1/4" = 1'-0"



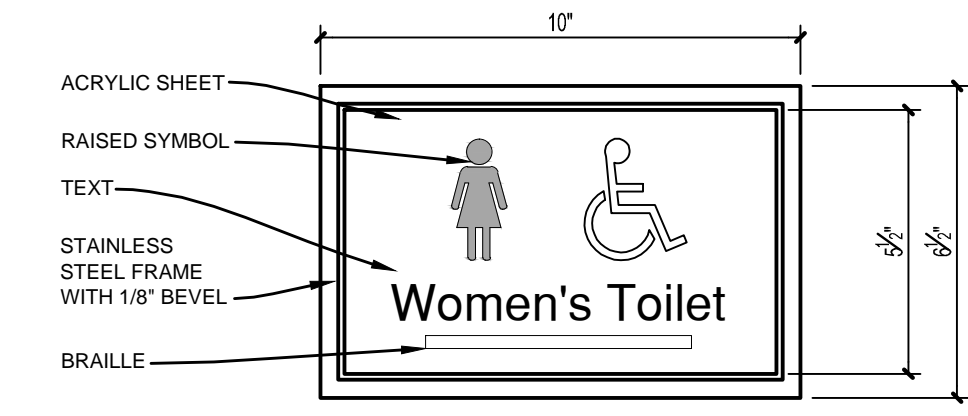
**4 INTERIOR ELEVATIONS**  
 A5.00 1/4" = 1'-0"



**5 INTERIOR ELEVATIONS**  
 A5.00 1/4" = 1'-0"



**2 RESTROOM SIGNAGE**  
 A5.00 3" = 1'-0"



**3 RESTROOM SIGNAGE**  
 A5.00 3" = 1'-0"

**RUNDELL ERNSTBERGER ASSOCIATES, LLC**  
 Land Planning + Urban Design + Landscape Architecture  
 611 W Main Street, Suite 201, Louisville, KY 40202  
 TE (502) 561.8676 FX (502) 561.9076  
 E-mail: restlouisville@reassoc.com  
 www.reassoc.com

additional offices in:  
 Indianapolis, IN | Muncie, IN

PREPARED FOR:  
**City of Rapid City**  
 Public Works Department  
 300 Sixth Street, Rapid City, SD 57701  
 TE (605) 394-4165 FX (605) 355-3083

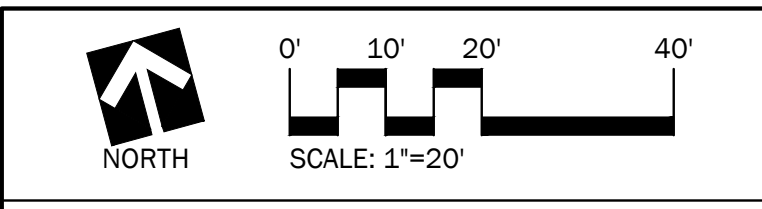
**Destination Rapid City**  
 606 Main Street, Rapid City, SD 57701  
 TE (605) 716-7979 FX (605) 341-6415

CONSULTANTS:  
**FourFront Design, Inc.**  
 Architecture and Civil Engineering  
 517 Seventh Street  
 Rapid City, SD 57701  
 TE (605) 342-9470 FX (605) 342-2377

**Skyline Engineering, LLC**  
 Electrical and Mechanical Engineering  
 615 12th Street  
 Rapid City, SD 57701  
 TE (605) 737.3830 FX (605) 737.3859

**Albertson Engineering, Inc.**  
 Structural Engineering  
 3202 W Main Street, Suite C  
 Rapid City, SD 57702  
 TE (605) 343.9606 FX (605) 341.7395

PROJECT:  
**Main Street Square  
 Site Development  
 Rapid City, South Dakota**



REVISIONS:			
NO.	BY	DESCRIPTION	DATE
—	REA	100% CONSTRUCTION DRAWINGS REVIEW SET	9/08/10

**COPYRIGHT NOTICE:**  
 THE CONCEPTS, IDEAS, DESIGNS, PLANS, AND DETAILS AS SHOWN ON THIS DOCUMENT ARE THE SOLE PROPERTY OF RUNDELL ERNSTBERGER ASSOCIATES, LLC AND WERE CREATED, DEVELOPED, AND PRESENTED FOR USE ON THIS SPECIFIC PROJECT. NONE OF THE CONCEPTS, IDEAS, DESIGNS, PLANS, AND DETAILS SHALL BE USED BY ANY PERSON, FIRM, OR CORPORATION FOR ANY PURPOSE WHATSOEVER, WITHOUT THE EXPRESSED WRITTEN CONSENT OF RUNDELL ERNSTBERGER ASSOCIATES, LLC. THE OWNER/CLIENT SHALL BE PERMITTED TO RETAIN COPIES FOR INFORMATION AND REFERENCE IN CONNECTION WITH THIS PROJECT.

DRAWING NAME:  
**Interior Elevations**

CERTIFICATION:  
**100% CDs  
 OWNER  
 REVIEW SET**

City #: PR2010-1901  
 Project No.: 091131  
 Date: Sept. 8, 2010  
 Drawn by: PMA  
 Checked by: DDR  
 File: 1592\_A5.00.dwg

**A5.00**