

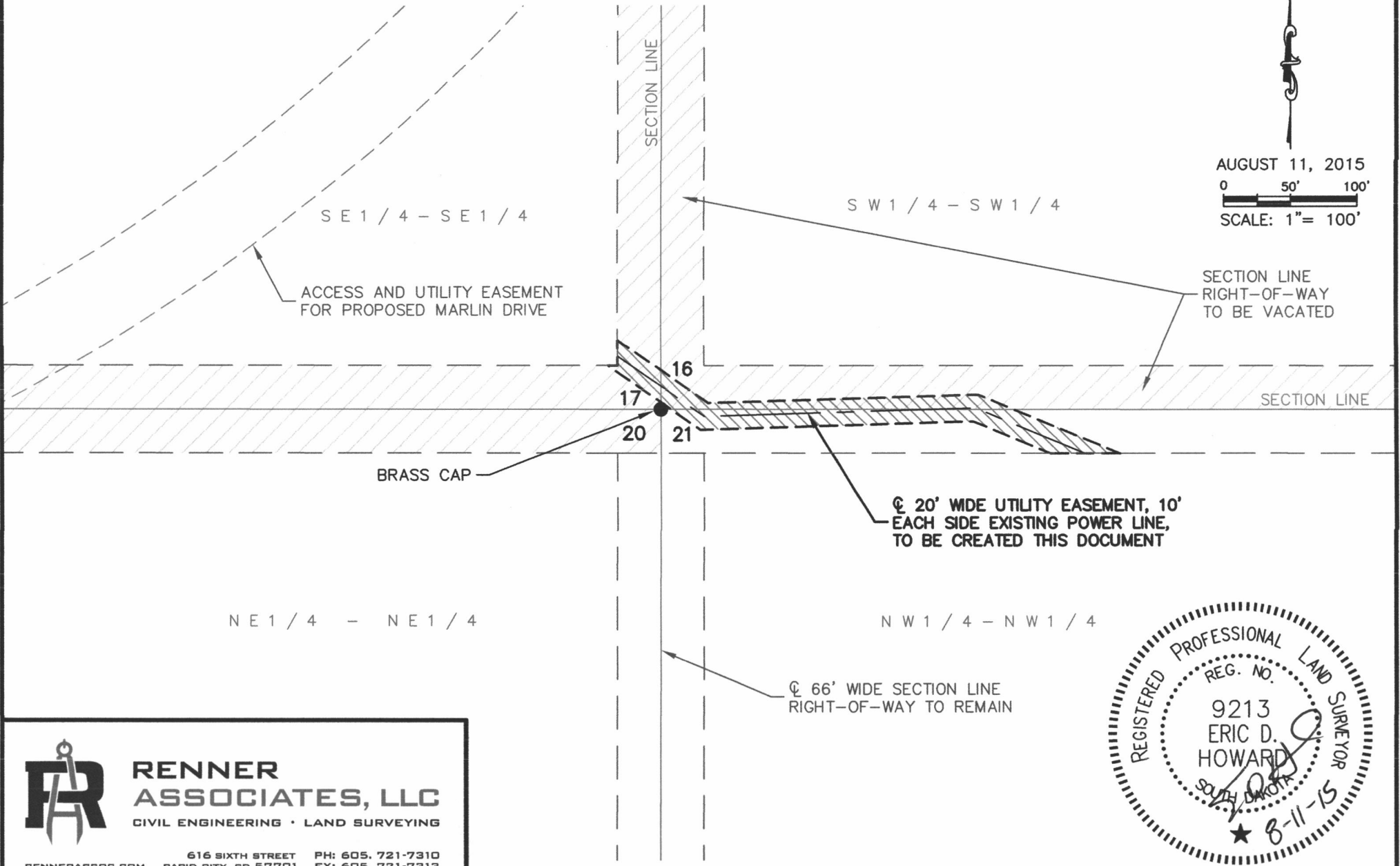
EXHIBIT 'A' UTILITY EASEMENT

LOCATED IN THE SW1/4 OF SW1/4 OF SECTION 16, SE1/4 OF SE1/4 OF SECTION 17 AND
NW1/4 OF NW1/4 OF SECTION 21, ALL IN T1N, R8E, BHM,
RAPID CITY, PENNINGTON COUNTY, SOUTH DAKOTA

S:\2239.118 ELKS CROSSING - PHASE 4\EASEMENTS\2239.118 UTILITY EASEMENT-SECTION LINE.dwg, 8/11/2015 9:51:48 AM



AUGUST 11, 2015
0 50' 100'
SCALE: 1" = 100'




RENNER ASSOCIATES, LLC
CIVIL ENGINEERING • LAND SURVEYING

616 SIXTH STREET PH: 605. 721-7310
RAPID CITY, SD 57701 FX: 605. 721-7313

RENNERASSOC.COM

