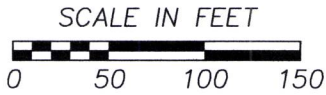


Proposed Lot 1 of Victra Subdivision No. 2
 being the East 285.96 feet of the West 1013.00 feet
 of the South 529.63 feet in the SW1/4 SW1/4 of Section 12,
 Township 1 North, Range 8 East of the Black Hills Meridian,
 Pennington County, South Dakota.

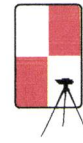
January, 2015



RECEIVED

JAN 28 2015

SW 1/4 SW 1/4
 SECTION 12,
 T1N, R8E B.H.M.



D.C. Scott
 SURVEYORS, INC.
 3153 ANDERSON ROAD
 RAPID CITY, SD 57703
 (605) 393-2400

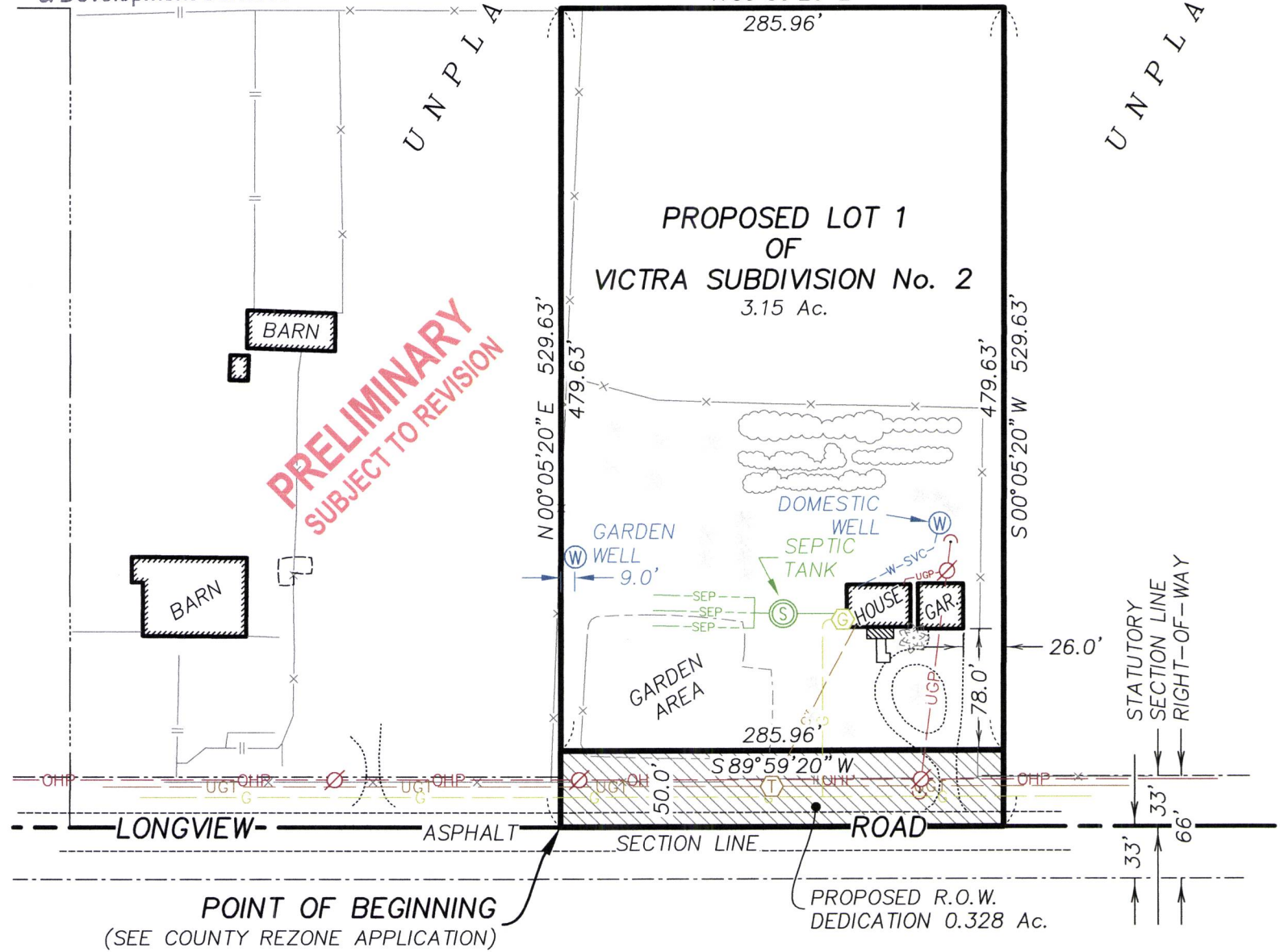
UNPLATTED

Rapid City Community Planning
 & Development Services

UNPLATTED

N 89° 59' 20" E
 285.96'
PROPOSED LOT 1
OF
VICTRA SUBDIVISION No. 2
 3.15 Ac.

PRELIMINARY
SUBJECT TO REVISION



POINT OF BEGINNING
 (SEE COUNTY REZONE APPLICATION)

PROPOSED R.O.W.
 DEDICATION 0.328 Ac.