

Submit: 6-2015  
PRELIMINARY SUBDIVISION PLANS

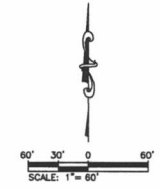
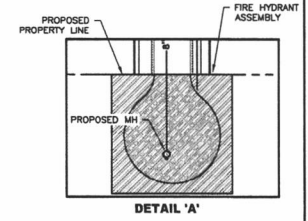
Revisions		
NO.	DATE	DESCRIPTION

Historic Job No: DDI #14-0724 IMS    Designed By: PMM    Drawn By: PMM  
Surveyed By:    Survey Date:

**PRELIMINARY FOR REVIEW ONLY**

**DREAM DESIGN INTERNATIONAL, INC.**  
ENGINEERING, LANDSCAPE ARCHITECTURE, LAND PLANNING, CONSTRUCTION ADMINISTRATION  
1000 E. WASHINGTON DRIVE, SUITE 200, RAPID CITY, SD 57701  
PHONE: (605) 348-0538 FAX: (605) 348-0545 WWW.DREAMDESIGNINC.COM

**LAGRAND SUBDIVISION**  
RAPID CITY, PENNINGTON COUNTY, SD



K:\300-7601724 Lagrand Subdivision\Drawings\Utilities\Utilities.dwg, Thursday, 6/17/2015 9:11:58 AM