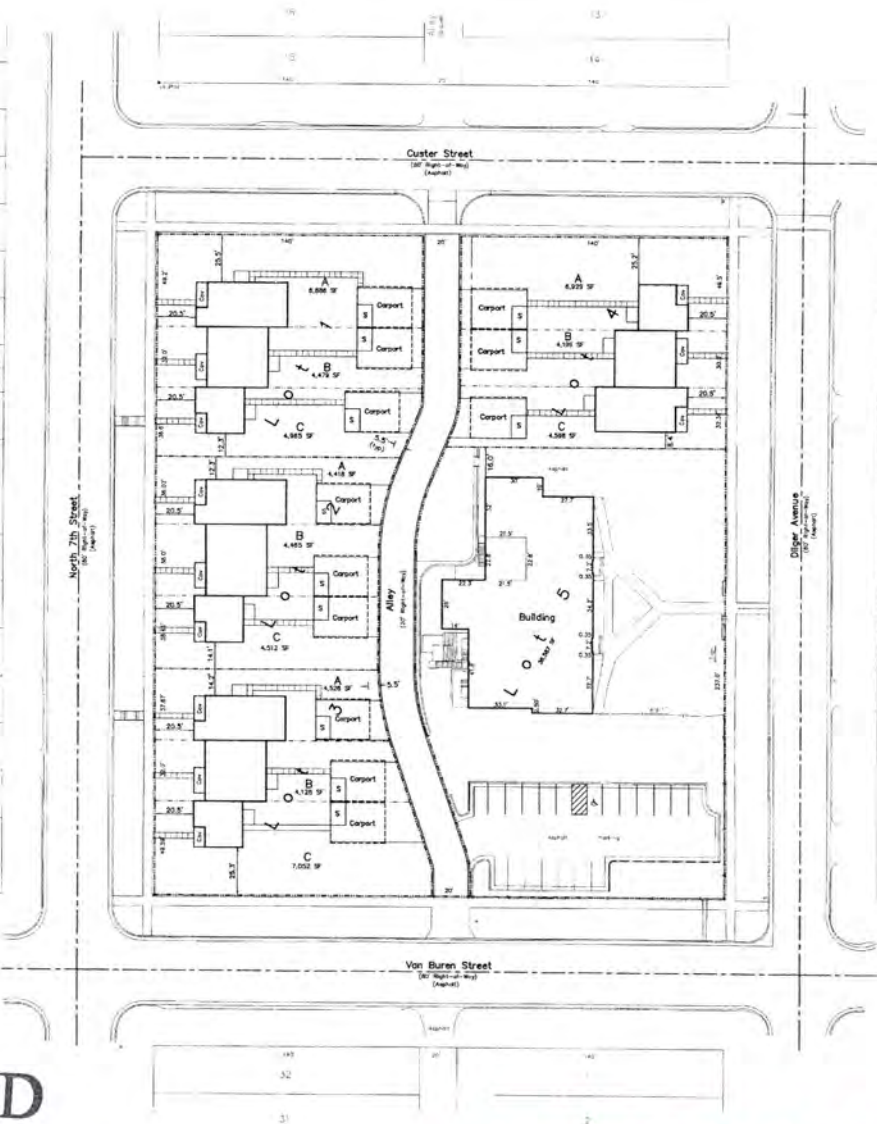


RECEIVED

DEC 27 2013

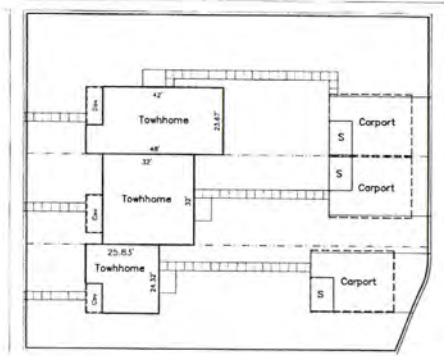
PRELIMINARY

30  
31  
32  
33  
34  
35  
36  
37  
38  
39  
40  
41  
42  
43  
44  
45  
46



26  
27  
28  
29  
30  
31  
32  
33  
34  
35  
36  
37  
38  
39  
40  
41  
42  
43  
44  
45  
46

Typical Unit Details  
1" = 20'



Fisk Land Surveying & Consulting Engineers, Inc.  
1100 South 27th Street  
Rapid City, South Dakota 57704  
(605) 348-1335 (ph) (605) 341-1112 (fx)  
fisk@fiskengineers.com

The information herein is confidential, material, and specific to the date, time, and purpose as stated. No warranty or guarantee is expressed or implied in any part, for any other purpose at any time except as stated.

Proposed Site Plan  
Black Hills Area Habitat for Humanity  
Garfield Green  
Block 76, North Rapid Addition #2  
Rapid City, Pennington County, South Dakota

Surveyed by: ML/CD  
Date: 3/22/13  
Drawn by: BL/RWF  
Date: 4/24/13  
Checked by: JF

Revisions  
12/9/13-Layout

Project No.  
13-03-07  
Proposed Site Plan

DATE  
12-27-13  
13-03-07-13-1474