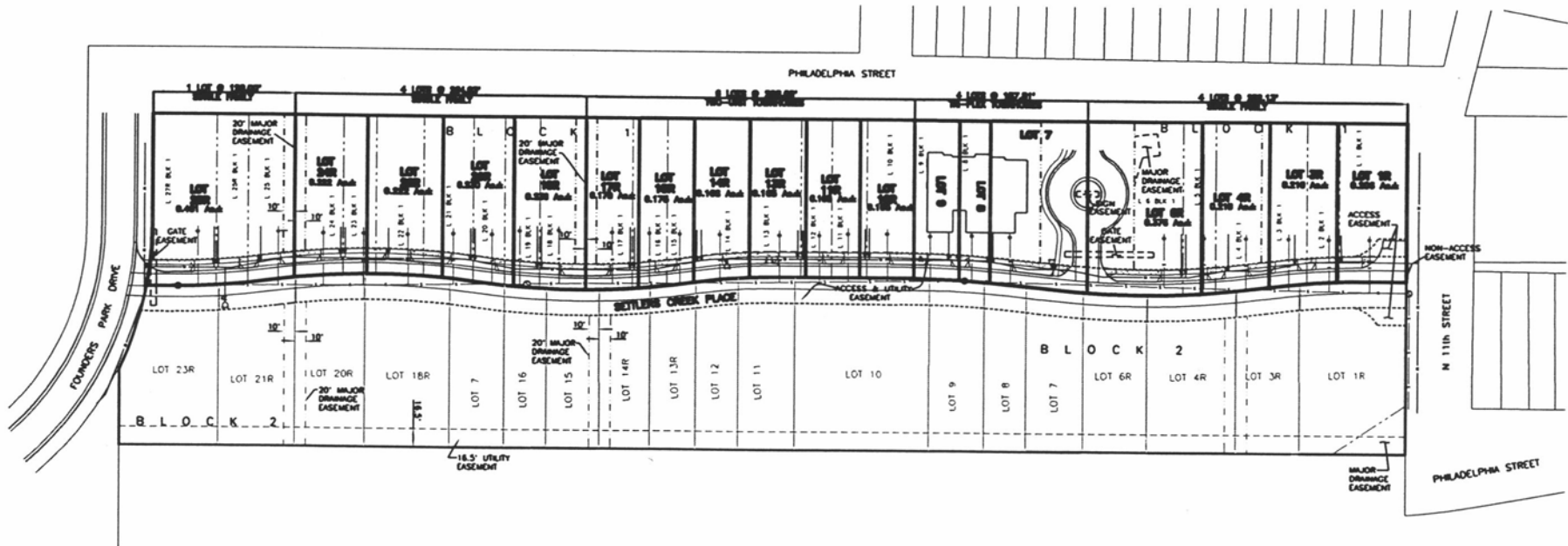


RECEIVED

APR 26 2013

**RAPID CITY COMMUNITY PLANNING
& DEVELOPMENT SERVICES**



SINGLE FAMILY - 8 d.u.
TOWNHOUSE - 6 d.u.

- | | | | |
|-----------|-----------------------|---|--------------|
| — | NEW PROPERTY LINES | ○ | FIRE HYDRANT |
| - - - | OLD PROPERTY LINES | ⊕ | GATE VALVE |
| - · - · - | EXISTING SEWER SYSTEM | ● | CLEAN OUT |
| - · - - | EXISTING WATER SYSTEM | □ | CURB STOP |

SPERLICH Consulting, Inc.
 921 Columbia St., Suite 1 Rapid City, SD 57701
 TEL: (605) 340-1100 FAX: (605) 726-4048
 E-MAIL: info@sperrlich.com
 Engineering, Surveying, Planning

REVISIONS

NO.	DATE	REVISION

LEGAL DESCRIPTION

SETTLERS CREEK FINAL PLANNING DEVELOPMENT OVERLAY

PROJECT NUMBER: **3188.07**
 SHEET: **1 / 1**

