

EROSION AND SEDIMENT CONTROL (ESC) NARRATIVE

Site Name
Residential Townhomes
Lots 2A, 2B, 2C & 2D Severson Subdivision
located in Section 16, T1N, R7E, B1M3
Rapid City, Pennington County, South Dakota

Client
Chad Williams
2919 Harvard Ave.
Rapid City, SD 57701

Engineer
Fisk Land Surveying &
Consulting Engineers, Inc.
P.O. Box 8154
Rapid City, SD 57709

General Contractor
Unknown

PROJECT DESCRIPTION

The project consists of residential construction for four townhomes, including minor shaping and grading for parking/creation, service the installations and associated concrete walls/dikes.

EXISTING SITE CONDITIONS

The site is on undeveloped HWY 16 road L102

ADJACENT AREAS
North: LDR 1
South: LDR 1
East: LDR 1
West: LDR 1

SOILS

Designations B & D (from Book Plan)

AREA AND VOLUME DISTURBED

Disturbed area is 15,000 SFs (0.34Ac).
Total volume disturbed 1,500 Cfs. See Plan.

SEDIMENT CONTROL MEASURES

Sediment control measures will consist of Wetbas, (or Compact Filter Sock, Inlet Protection, Temporary Sediment Traps and Vehicle Tracking Control. See Schedules.

AREA FOR STOCKPILES AND STORAGE

Topsoil stockpile areas on necessary storage areas shall be contained within the settled containment areas as shown on the ESC Plan.

EROSION AND SEDIMENT CONTROL CONSTRUCTION SEQUENCE

Phase 1: Install Erosion and Sediment Control devices and Notification/Contact info signage in accordance with the plan (See Tables)

Phase 2: Upon completion of construction improvements, initiate permanent stabilization measures on all disturbed areas.

Phase 3: When disturbed areas are stabilized, remove sediment control devices and the notices of termination with the State.

CONSTRUCTION AND ESC SEQUENCE SCHEDULE PERMANENT STABILIZATION MEASURES

ESC Device installation and demolition/removal operations represent the initial phase of construction activity followed by grading/shaping and construction of residential structures. Installation of concrete paving will complete construction activities. Permanent stabilization measures include turf and restorative landscaping. Maintenance of landscaping is required until vegetation is established and stabilized.

STORMWATER MANAGEMENT CONSIDERATIONS

Prior installation of improvements to the site drain westerly at 102 E. Construction activity and completed construction will not alter the historical drainage patterns. Utilities along the downhill side of the site and temporary sediment traps will provide primary Erosion and Sediment Control.

MAINTENANCE

Inspection of Erosion and Sediment Control Measures should be scheduled weekly and following any storm event of 0.5 inches or greater. All measures will be maintained in good working order. Inspection and maintenance will continue until all disturbed areas have reached final stabilization.

SPILL PREVENTION

Prevention Products: On-site construction equipment will be maintained for leaks & regular repair/preventive maintenance. Asphalt, Chemical and Fertilizer: The use of asphalt and fertilizer within designated work areas. Surplus concrete from washout areas shall be disposed of at a permitted dump site.

SPILL CONTROL PRACTICES

Chemical and petroleum product spills of toxic or hazardous materials will be reported to the appropriate Federal, State or Local Government agency. All spills will be cleaned up immediately after discovery.

SOIL SURFACE STABILIZATION PRACTICES

After construction begins, soil surface stabilization shall be applied within 14 days to all disturbed areas that may not be at final grade but will remain dormant (undisturbed) for periods longer than 21 calendar days. Within 14 days after final grade is reached on any portion of the site, permanent or temporary soil surface stabilization shall be applied to disturbed areas and soil stockpiles.

MAXIMUM LIMITS OF LAND EXPOSURES FOR SELECTION OF EROSION CONTROLS

Erosion Control Method	Maximum allowable period of exposure (months)
Surface Roughening	N/A
Mulching	12
Temporary Revegetation	12-24
Permanent Revegetation	24 or more
Soil Stockpile Revegetation	12
Early Application of Road Base	12

SITE PLAN

The existing contours are shown at two foot intervals. The proposed area of one foot intervals. The construction limits, loading area, washout area and all features are shown on the plan.

NOTICE OF INTENT (Permit No. _____)

A notice of intent has not been filed with DNR.

NEEDS

No variances will be requested for this project.

DEWATERING

Dewatering operations are not expected. If needed, a general dewatering permit will be obtained from DNR.

EROSION AND SEDIMENT CONTROL PLAN CERTIFICATION

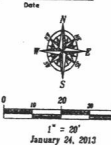
This erosion and sediment control narrative and attached erosion and sediment plan appears to fulfill the technical criteria and the criteria for erosion control and the requirements of the City of Rapid City. I understand that additional erosion and sediment control measures may be needed if unforeseen erosion problems occur or if the submitted plan does not function as intended. The requirements of this plan shall run with the land and be the obligation of the responsible party until such time as the plan is completed, modified or voided.

Owner/Developer _____ Date _____

General Contractor _____ Date _____

ENGINEER'S CERTIFICATION
I hereby certify that these plans were prepared under my direct supervision and that I am a duly registered Professional Engineer under the laws of the State of South Dakota.

Engineer _____ Date _____



SURVEYOR'S NOTES

Utilities shown are from visual inspection, sketches provided by individual service providers and Utility Locates performed by South Dakota One Call. The actual location of utilities and service lines may vary from the information shown hereon. We assume no liability for utilities and services that are not marked or are incorrectly defined by utility locators.

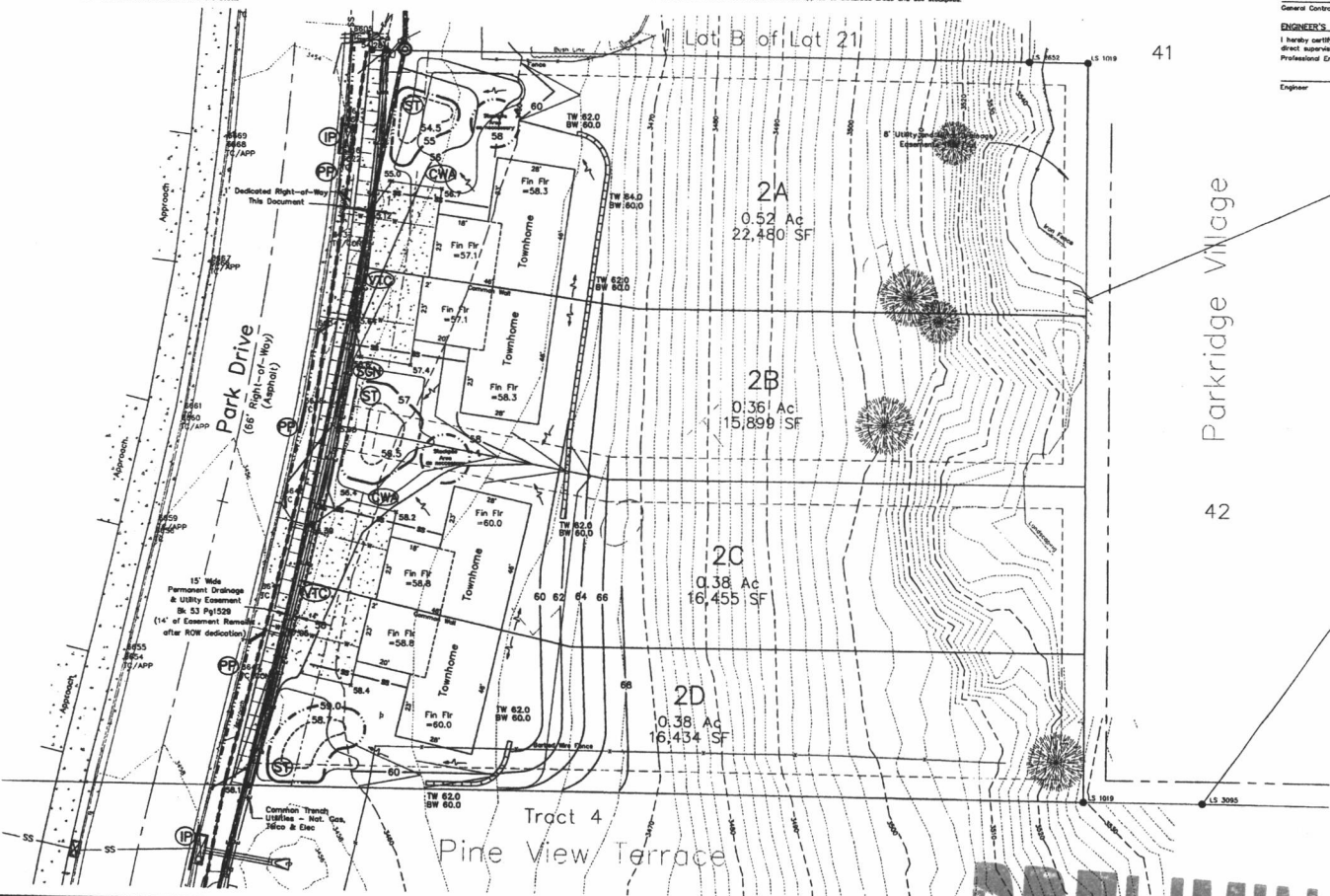
Bench Mark: City BM Network (NGVD29) - 2' interval

LEGEND

- +— = Fire Hydrant
- +— = Water Valve
- +— = Water Main
- +— = Water Service
- +— = Sanitary Sewer Manhole
- +— = Sanitary Sewer Main
- +— = Storm Sewer Inlet (Type E)
- +— = Storm Sewer Inlet (Type B)
- +— = Storm Sewer Main
- +— = Elec. Transformer (or at grade cabinet)
- +— = Telecommunications Pedestal
- +— = Fence Line
- +— = Property Line
- +— = Sign

ESC Device Key

- VTC = Vehicle Tracking Control
- SCN = Sign (Diameter Quality Standard 1.8L3)
- CWA = Concrete Washout Area
- ST = Temporary Sediment Trap
- IP = Inlet Protection
- PP = Permanent Protection (Compact Filter Sock)



PRELIMINARY

ONE CALL
BEFORE DIGGING
1-800-781-7474

Fisk Land Surveying & Consulting Engineers, Inc.
1022 Main Street, P.O. Box 8154
Rapid City, South Dakota 57709
(605) 348-0336 (fax)
fisk@fisklandsurvey.com



The information herein is copyright material, and specific to the date, client and purpose as stated.
No warranty or guarantee is expressed or implied for any party, for any other purpose at any time except as stated.

Erosion & Sediment Control Plan
Lots 2A, 2B, 2C & 2D of Severson Subdivision
Section 16, T1N, R7E, B1M3
Rapid City, Pennington County, South Dakota

Surveyed by: ML/CD
Date: 1/21/13
Drawn by: BL
Date: 1/24/13
Checked by: RWF

Revisions
Setbacks - 2/1/13
Let split, ROW - 3/7/13

Project No. 13-01-05
E & SC Plan
5 of 5