

UTILITY EASEMENT
LOT A OF SW1/4NW1/4
SECTION 26, T1N, R7E OF THE BHM
PENNINGTON COUNTY, SOUTH DAKOTA

OWNER: HIGHWAY 16 PROPERTIES, LLC



LEGEND

- FOUND MONUMENT
- ▭ UTILITY EASEMENT
- PROPERTY LINE
- - - EXISTING EASEMENT

PREVIOUSLY VACATED RIGHT-OF-WAY

PREVIOUSLY VACATED SECTION LINE RIGHT-OF-WAY

EXISTING UTILITY EASEMENT

PREVIOUSLY VACATED RIGHT-OF-WAY

UNREADABLE
 N = 627332.12
 E = 1200883.31

PREVIOUSLY VACATED SECTION LINE RIGHT-OF-WAY

20' WIDE UTILITY EASEMENT FOR EXISTING POWERLINE (THIS EXHIBIT) CONTAINING 0.08 AC +/-

LOT A OF SE1/4NE1/4 SECTION 27, T1N, R7E
 OWNER: HIGHWAY 16 PROPERTIES, LLC

LOT A OF SW1/4NW1/4 SECTION 26, T1N, R7E
 OWNER: HIGHWAY 16 PROPERTIES, LLC

HWS 1019
 N = 627061.67
 E = 1200874.06

LINE TABLE		
LINE #	DIRECTION	L (FT)
L1	S88°02'29"E	13.00
L2	S01°57'31"W	270.60
L3	N88°02'29"W	13.00
L4	N01°57'31"E	270.60

NOTE:
 BEARINGS REFERENCED TO SOUTH DAKOTA STATE PLANE, SOUTH ZONE, NAD83.

P:\12-124\AutoCAD\Easements\3726100003-UTILITY_PERM.dwg

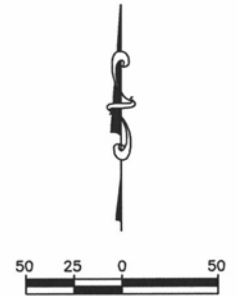
Ferber Engineering Company, Inc.
 Civil Engineering • Water Resources • Transportation • Land Surveying • GIS
 728 East Washington St, Rapid City, SD 57701 • Phone: (605) 343-3111

EXHIBIT A

PROJECT NO.
 J08-131
 FIGURE NO.
 1 OF 1

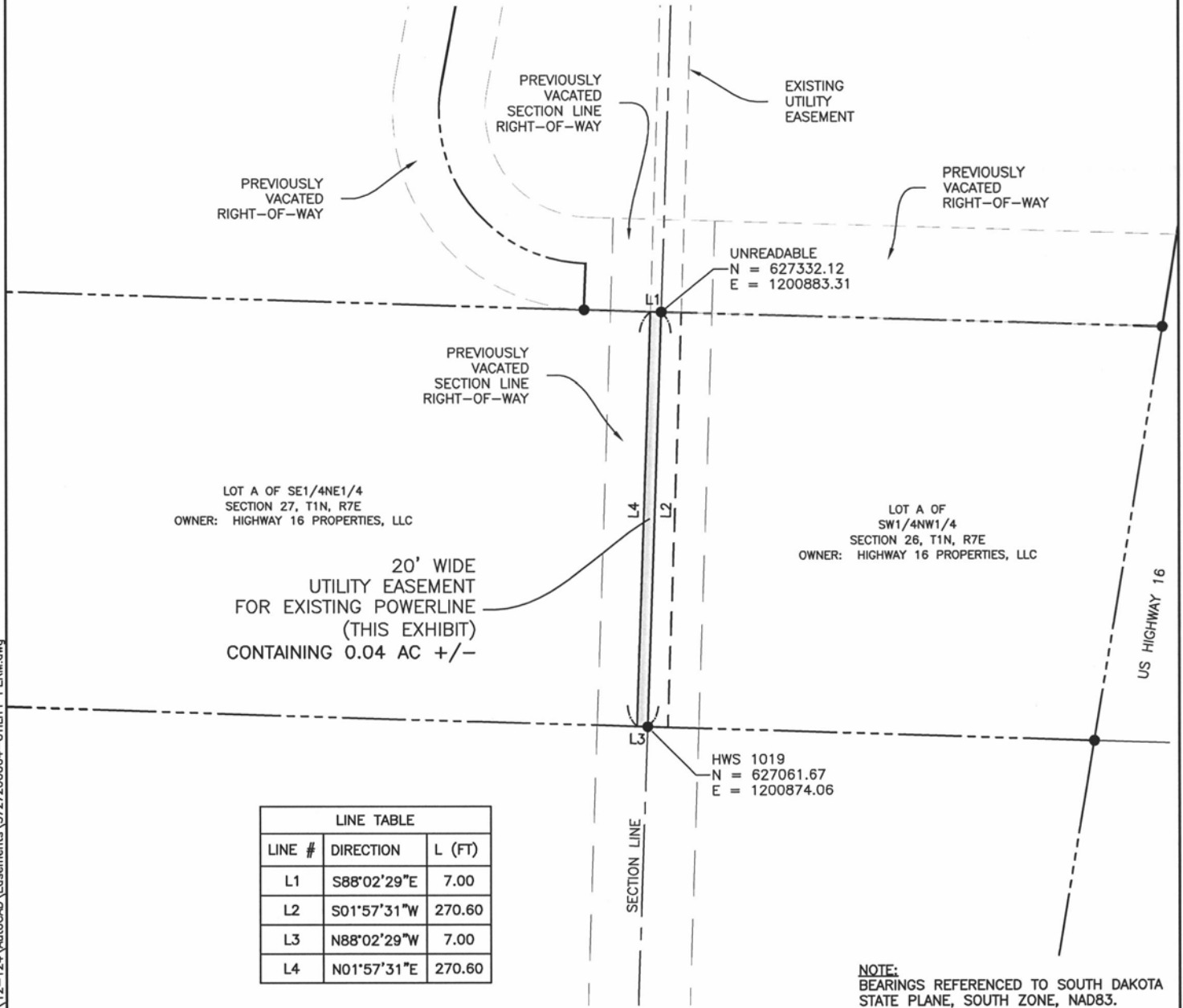
UTILITY EASEMENT
LOT A OF SE1/4NE1/4
SECTION 27, T1N, R7E OF THE BHM
PENNINGTON COUNTY, SOUTH DAKOTA

OWNER: HIGHWAY 16 PROPERTIES, LLC



LEGEND

- FOUND MONUMENT
- ▭ UTILITY EASEMENT
- PROPERTY LINE
- - - EXISTING EASEMENT



LINE TABLE		
LINE #	DIRECTION	L (FT)
L1	S88°02'29"E	7.00
L2	S01°57'31"W	270.60
L3	N88°02'29"W	7.00
L4	N01°57'31"E	270.60

NOTE:
 BEARINGS REFERENCED TO SOUTH DAKOTA STATE PLANE, SOUTH ZONE, NAD83.

P:\12-124\AutoCAD\Easements\3727200004-UTILITY_PERM.dwg

FEC Ferber Engineering Company, Inc.
 Civil Engineering • Water Resources • Transportation • Land Surveying • GIS
 729 East Watkinson St., Rapid City, SD 57701 • Phone: (605) 343-3311

EXHIBIT A

PROJECT NO.
 J08-131
 FIGURE NO.
 1 OF 1