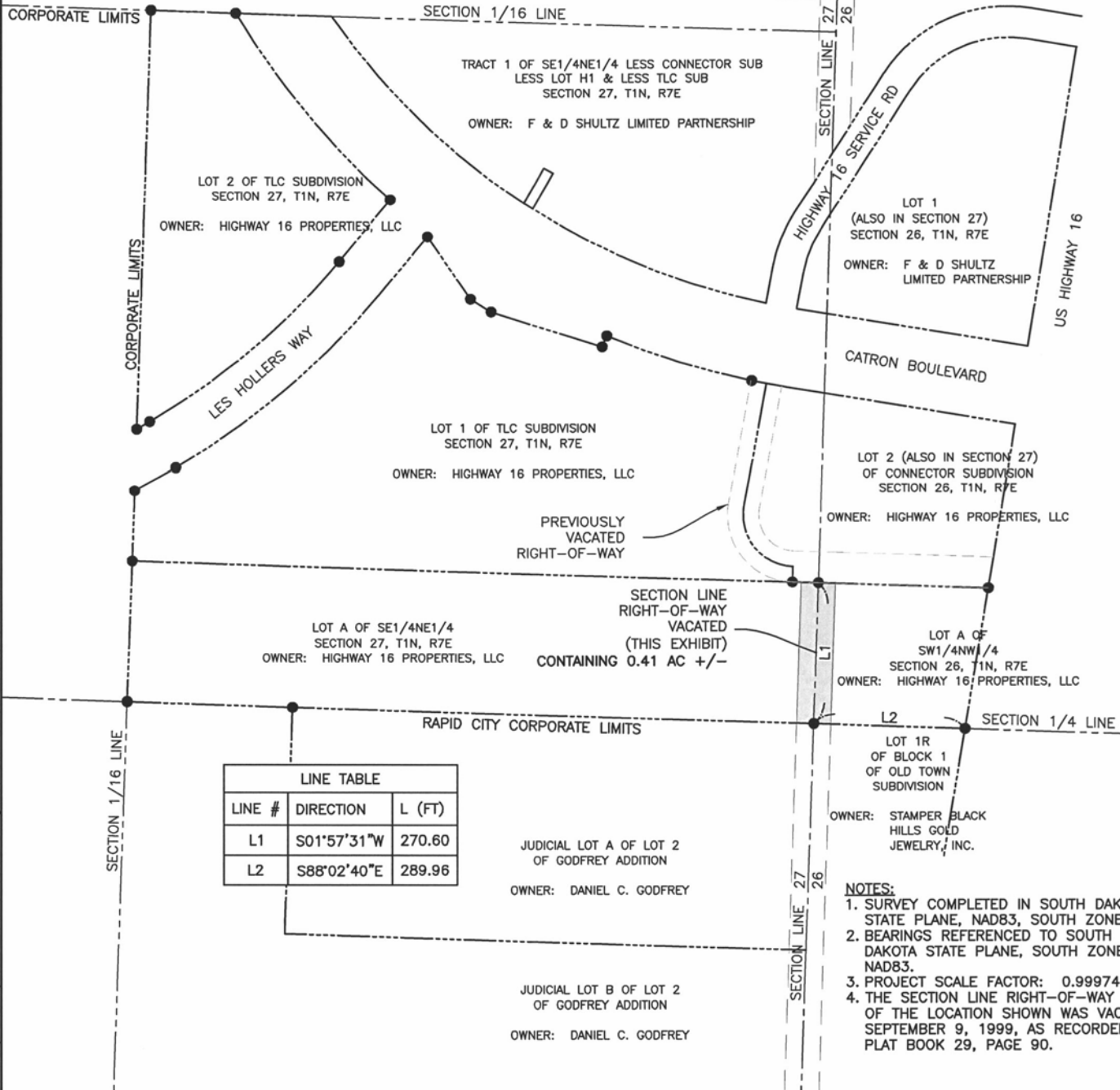
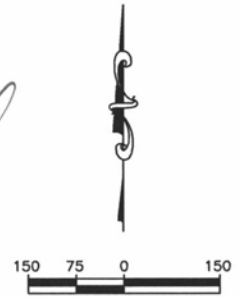


**A PORTION OF SECTION LINE
RIGHT-OF-WAY TO BE VACATED
IN THE SE1/4NE1/4 OF SECTION 27, T1N, R7E AND
IN THE SW1/4NW1/4 OF SECTION 26, T1N, R7E, BHM
RAPID CITY, PENNINGTON COUNTY, SOUTH DAKOTA**

LEGEND

- FOUND SURVEY MONUMENT
- ▭ ROW TO BE VACATED THIS DOCUMENT
- PROPERTY LINE



LINE TABLE		
LINE #	DIRECTION	L (FT)
L1	S01°57'31"W	270.60
L2	S88°02'40"E	289.96

- NOTES:**
1. SURVEY COMPLETED IN SOUTH DAKOTA STATE PLANE, NAD83, SOUTH ZONE.
 2. BEARINGS REFERENCED TO SOUTH DAKOTA STATE PLANE, SOUTH ZONE, NAD83.
 3. PROJECT SCALE FACTOR: 0.9997475
 4. THE SECTION LINE RIGHT-OF-WAY NORTH OF THE LOCATION SHOWN WAS VACATED ON SEPTEMBER 9, 1999, AS RECORDED IN PLAT BOOK 29, PAGE 90.

P:\12-124\Autocad\ROW VACATION EXHIBIT 2.dwg

FEC Ferber Engineering Company, Inc.
Civil Engineering • Water Resources • Transportation • Land Surveying • GIS
729 East Waterman St, Rapid City, SD 57701 • Phone: (605) 343-3311

EXHIBIT A

PROJECT NO.
J12-124
FIGURE NO.
1 OF 1