

MINUTES  
Utility Support Fund and SAB 28 Fund Oversight Committee  
December 14, 2012

Members Present: Terry Wolterstorff, Brett Limbaugh, Charity Doyle, Ritchie Nordstrom, John Roberts, and Ron Sasso.

Members Absent: Kay Rippentrop, Chad Lewis, Pauline Sumption, and Mayor Sam Kooiker.

The following members arrived during the course of the meeting: None.

Others Present: Dale Tech, Amber Sitts, and Brenda Hafner.

Call to Order

Wolterstorff called the meeting to order at 10:00 a.m.

Adopt Agenda

Nordstrom moved to adopt the agenda as prepared, second by Sasso. Motion carried unanimously.

Approval of Minutes

Doyle moved, second by Nordstrom to approve the minutes of the June 29, 2012. Motion carried unanimously.

SAB 28 Fund – Wolterstorff explained the fund and suggested that it be used for assessment projects and that this fund needs to be utilized more. This committee needs to set policies on how the fund is used. Uses for the fund were discussed. Wolterstorff suggested that all projects that are funded by the SAB 28 Fund will go before this committee for approval. Limbaugh would like a list of all roads that are not paved for possible use of this fund. Doyle moved to acknowledge the discussion, second by Roberts. Motions carried unanimously.

Adjust Funding Schedule

Wolterstorff explained the reason for the adjustment of the funding schedule. Nordstrom moved, second by Sasso to adjust the funding schedule on the following projects:

Seeger Drive / 143<sup>rd</sup> Avenue / Country Road Water Extension - \$150,000 in 2013 and \$1,950,000 in 2014.

Southside Drive Sewer (Elks Club Sewer Interceptor) – \$4,150,000 in 2013.

Motion carried unanimously.

5<sup>th</sup> Street Oversize Request

Roberts moved, second by Sasso to fund \$500,000.00 for the streets and drainage portion through the Utility Support Fund. Motion carried unanimously.

Utility Support Fund and SAB 28 Fund Oversight Committee  
Page 2

Viking Drive Sanitary Sewer

Dale Tech explained the reason for the funding request. Tech is requesting some design money in 2013 and the rest for construction in 2014. Sasso moved to approve funding of \$520,000.00 from the Utility Support Fund for the Viking Drive Sanitary Sewer, with \$50,000.00 in 2013 and \$470,000.00 in 2014, second by Nordstrom.

Request for Additional Improvements on Kansas City Street

Dale Tech explained the reason for the request. Hani Shafai explained and showed the additional improvements proposed. There was discussion on other similar projects that have been done in the downtown area with public funds. There was discussion on the request and the amount of money needed for the improvements in the right of way only. Nordstrom moved, second by Roberts to allocate \$160,000.00 from the Utility Support Fund for additional improvements in the right of way.

Adjourn

There being no further business, a motion was made by Doyle, second by Nordstrom to adjourn the meeting at 11:25 a.m. Motion carried unanimously.



# CITY OF RAPID CITY

RAPID CITY, SOUTH DAKOTA 57701

---

Public Works Department  
**Engineering Services Division**

300 Sixth Street

Telephone: (605) 394-4154 FAX: (605) 355-3083

Web: [www.rcgov.org](http://www.rcgov.org)

## MEMORANDUM

TO: Terry Wolterstorff  
FROM: Michelle Schweitzer  
SUBJECT: Cobalt Drive Sanitary Sewer Extension

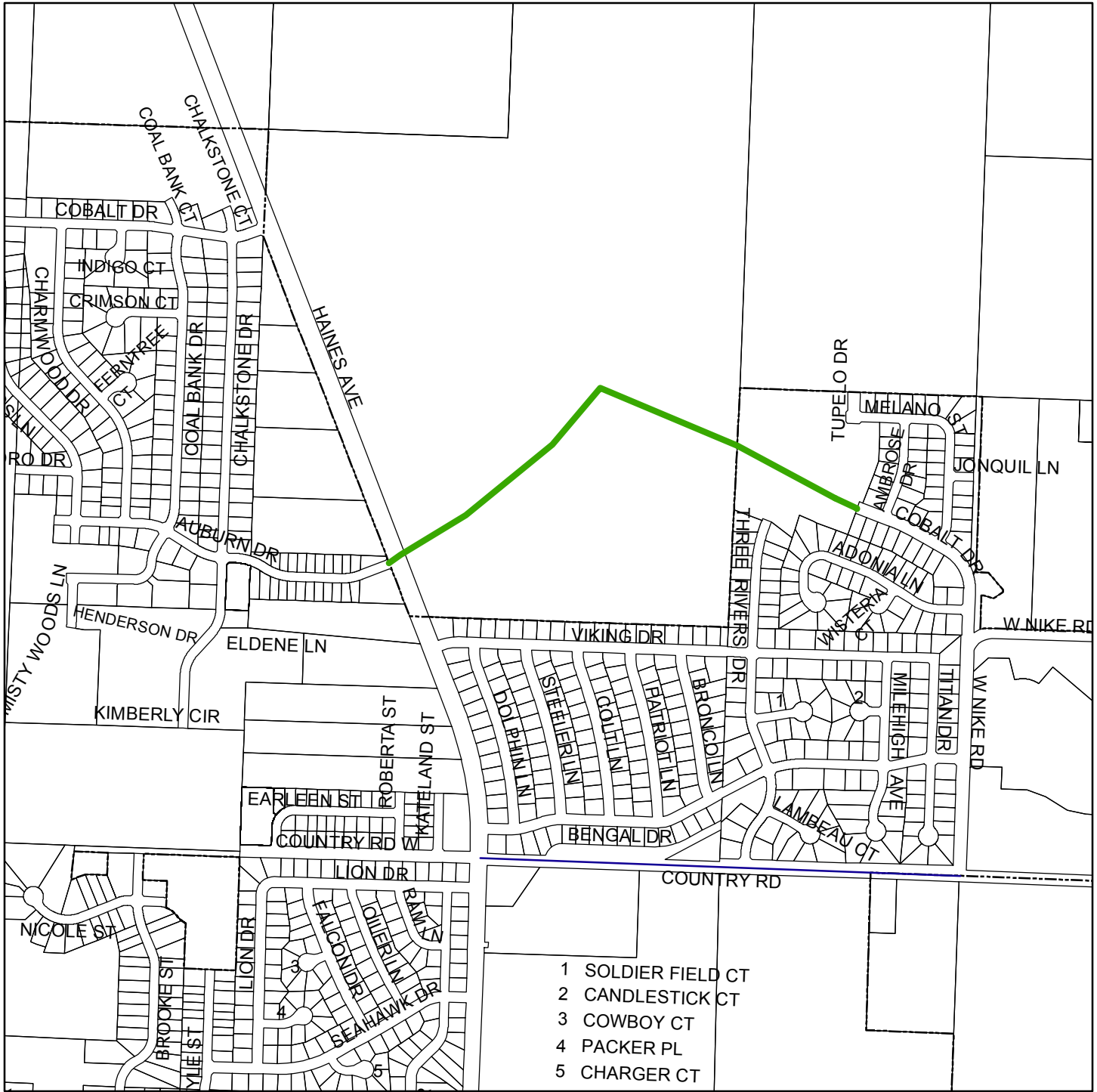
DATE: December 11, 2012

During a recent review of development plans in the northeast area of Rapid City, it has come to staff's attention that there is a need to extend sanitary sewer as shown on Exhibit "A" to relieve capacity concerns in our existing sanitary sewer system. The location shown on the exhibit was identified as a desirable location for a trunk sewer main in the Country Road Lift Station Engineering Study.

Staff anticipates a 12" sanitary sewer main will be required as shown on the exhibit with an estimated cost of \$520,000. Staff proposes the majority of the cost to construct the sewer main to be recouped through construction fees. Two fees would be established for this sewer main. The property through which the sewer main is constructed would be responsible for the base cost of an 8" main which will be recouped through the use of a frontage fee. The cost to upsize the sanitary sewer main to a 12" main will be allocated to the upstream basin as an oversize fee collected on a per acre basis. The City will not be able to recoup 100% of the oversize fees due to the existing development upstream of the proposed sewer. What can be collected will be done as property develops and buildings connect to the City sanitary sewer system.



EQUAL OPPORTUNITY EMPLOYER



- 1 SOLDIER FIELD CT
- 2 CANDLESTICK CT
- 3 COWBOY CT
- 4 PACKER PL
- 5 CHARGER CT

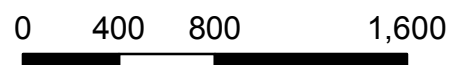
### Cobalt Drive Trunk Sewer Extension



#### Legend

#### Classification

— Proposed Trunk Sewer



1 inch = 800 feet