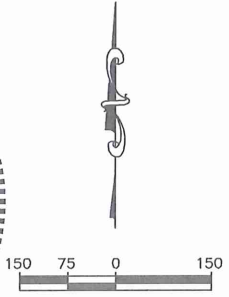
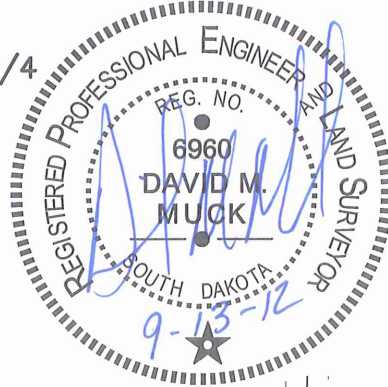
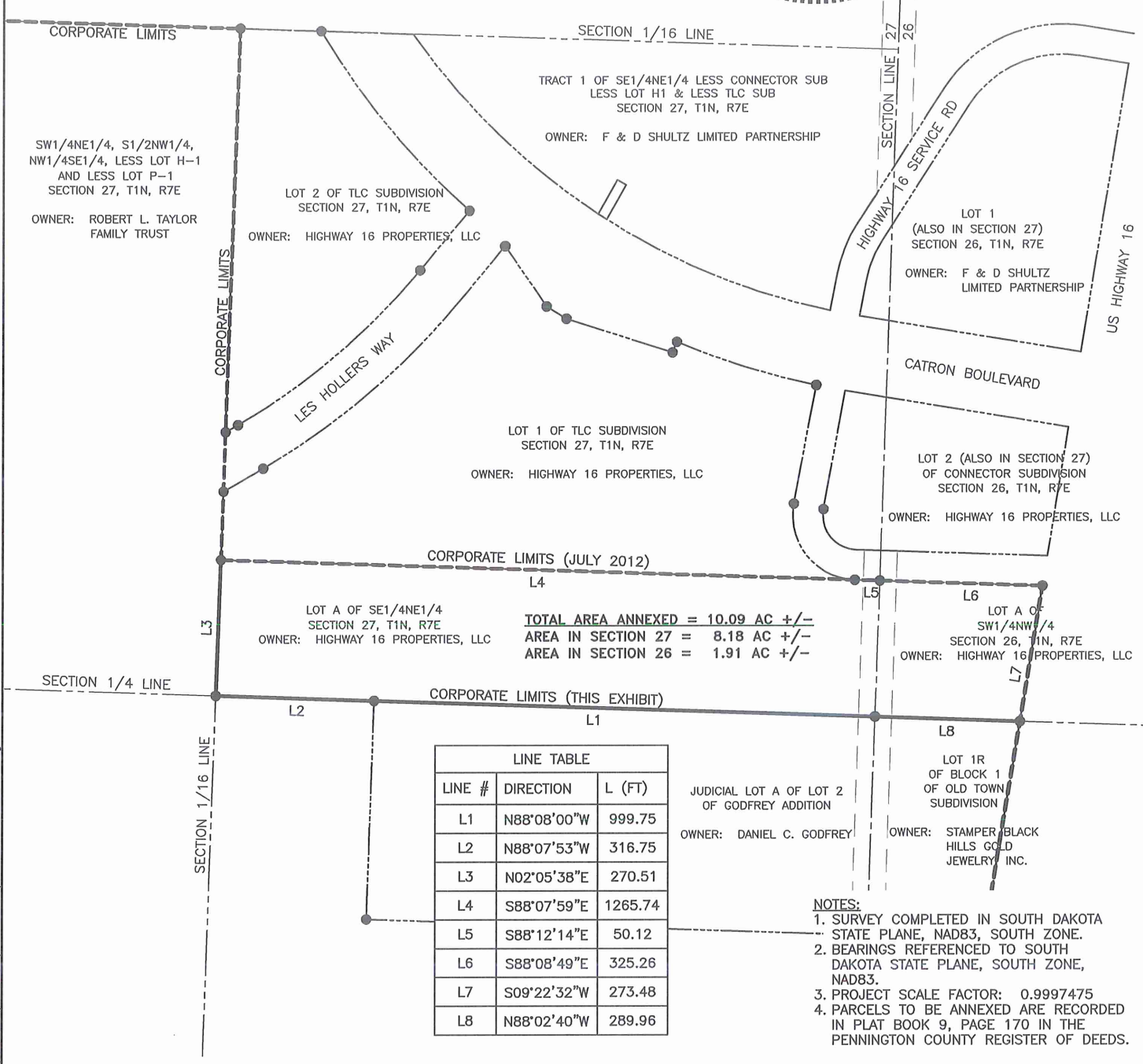


**ANNEXATION  
OF LOT A OF THE SE1/4NE1/4 OF  
SECTION 27, T1N, R7E AND LOT A OF THE SW1/4NW1/4  
OF SECTION 26, T1N, R7E, PENNINGTON COUNTY  
INTO THE CITY OF RAPID CITY, SOUTH DAKOTA**



**LEGEND**

- FOUND SURVEY MONUMENT
- ROW TO BE VACATED THIS DOCUMENT
- - - - - PROPERTY LINE



LINE TABLE		
LINE #	DIRECTION	L (FT)
L1	N88°08'00"W	999.75
L2	N88°07'53"W	316.75
L3	N02°05'38"E	270.51
L4	S88°07'59"E	1265.74
L5	S88°12'14"E	50.12
L6	S88°08'49"E	325.26
L7	S09°22'32"W	273.48
L8	N88°02'40"W	289.96

- NOTES:**
1. SURVEY COMPLETED IN SOUTH DAKOTA STATE PLANE, NAD83, SOUTH ZONE.
  2. BEARINGS REFERENCED TO SOUTH DAKOTA STATE PLANE, SOUTH ZONE, NAD83.
  3. PROJECT SCALE FACTOR: 0.9997475
  4. PARCELS TO BE ANNEXED ARE RECORDED IN PLAT BOOK 9, PAGE 170 IN THE PENNINGTON COUNTY REGISTER OF DEEDS.

P:\12-124\AutoCAD\Esasements\ANNEXATION EXHIBIT.dwg 09-13-12

**Ferber Engineering Company, Inc.**  
 Civil Engineering • Water Resources • Transportation • Land Surveying • GIS  
 729 East Watertown St, Rapid City, SD 57708 • Phone: (605) 343-3311

# EXHIBIT A

PROJECT NO.	J12-124
FIGURE NO.	1 OF 1