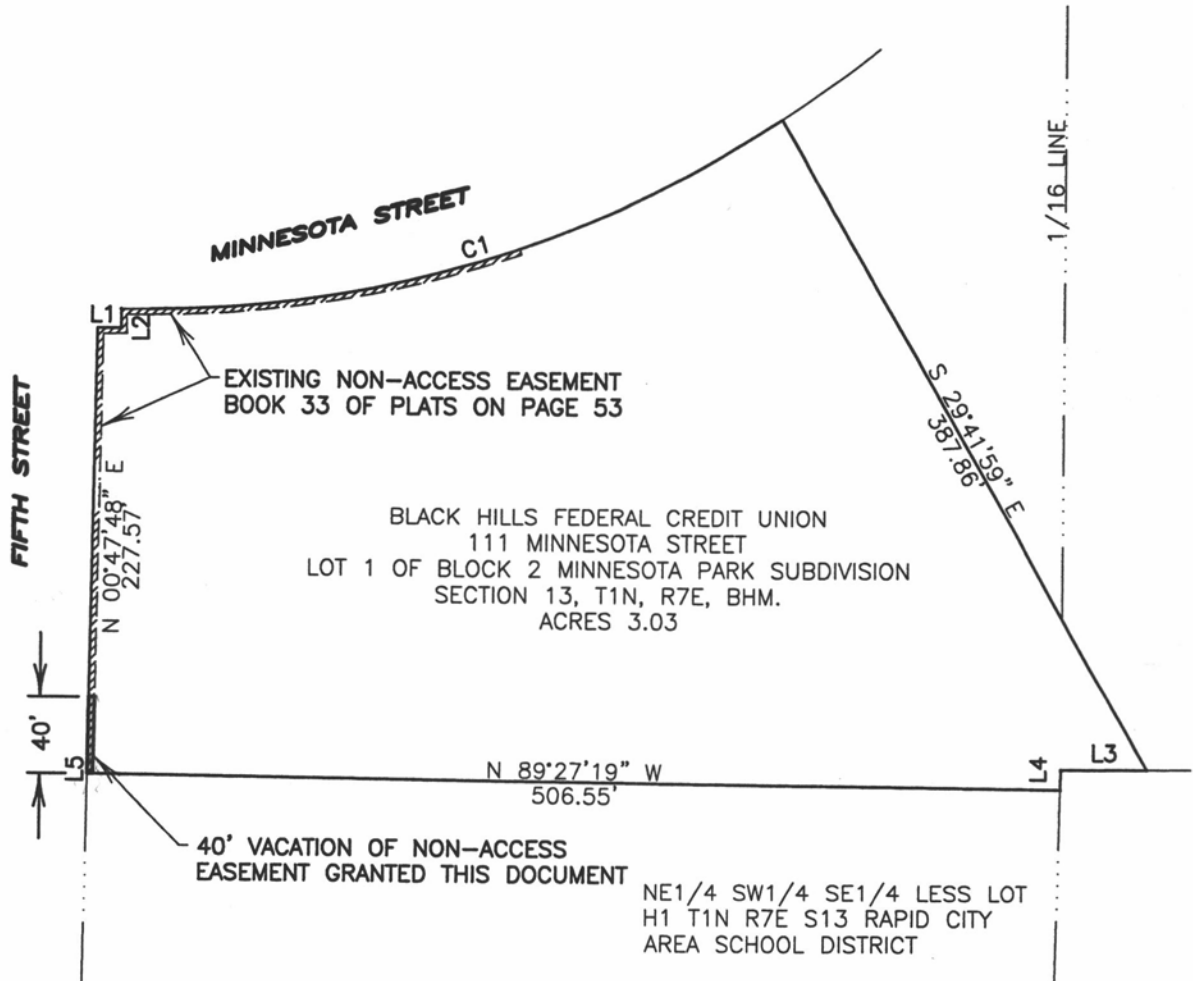


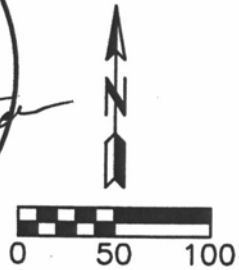
### EASEMENT EXHIBIT A

**PARTIAL VACATION OF NON-ACCESS EASEMENT  
LOCATED ON LOT 1 OF BLOCK 2 MINNESOTA PARK SUBDIVISION  
SECTION 13, T1N, R7E, B.H.M.  
RAPID CITY, PENNINGTON COUNTY, SOUTH DAKOTA**



CURVE	RADIUS	ARC LENGTH	CHORD LENGTH	CHORD BEARING	DELTA ANGLE
C1	604.52'	349.01'	344.19	S 73°01'37" W	33°04'45"

LINE	BEARING	DISTANCE
L1	S 89°32'23" W	12.30'
L2	N 01°16'23" W	9.95'
L3	S 89°29'47" W	44.83'
L4	N 01°13'37" E	10.32'
L5	S 00°47'48" W	4.65'



RECEIVED

JUN 28 2012

PREPARED BY: City Community Planning  
**cetec** ENGINEERING SERVICES, INC.  
1580 Corporate Blvd  
Rapid City, SD 57703  
Phone: (605) 341-7800  
Fax: (605) 341-7884  
www.cetecengineering.com  
Date: 6/27/12