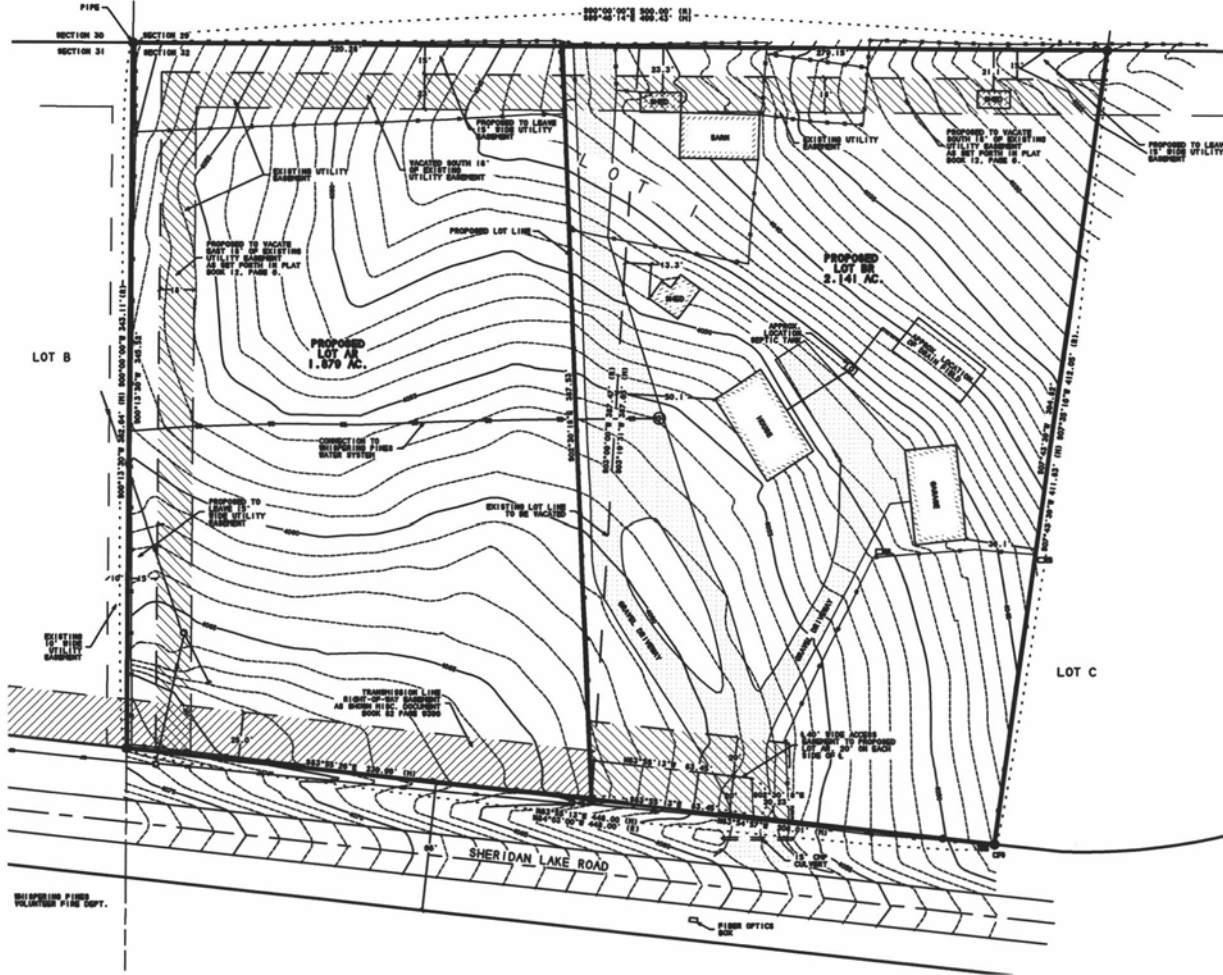


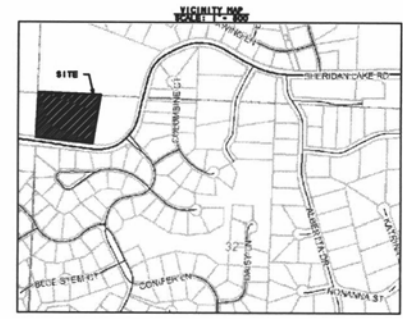
TRACT A



RECEIVED

MAR 01 2012

Rapid City Community Planning  
Development Services



- LEGEND**
- 1'-00" 1" CONTOUR INTERVAL
  - 5'-00" 5' CONTOUR INTERVAL
  - STONEY CENTERLINE
  - PROPERTY LINE
  - EXISTING BARRIAGE LINE
  - EXISTING WATER SERVICE
  - YARD DRAINAGE
  - EXISTING STORM SEWER LINE
  - OVERHEAD POWER LINE
  - PO FIBER OPTIC BOX
  - PO FENCE LINE
  - PO GUY ANCHOR
  - PO POWER POLE
  - PO ELECTRIC BOX
  - PO CONTROL POINT
  - PO (SET FOR THIS SURVEY)
  - PO INDICATES POINT SURVEY POINTMENT
  - PO INDICATES SET 5/8" IRISAN WITH SURVEY CAP NUMBER "TRIMMED TO LS 421", UNLESS OTHERWISE NOTED.
  - PO TELEPHONE JUNCTION BOX
  - PO INDICATES RECORD DIMENSION FROM PREVIOUS PLAT OR OS&D.
  - PO INDICATES DIMENSION MEASURED IN THIS SURVEY.

BRITTON ENGINEERING &  
LAND SURVEYING, INC.  
8035 BLACK HAWK ROAD, SUITE 5,  
PO BOX 649 BLACK HAWK, SD 57718  
PH. (605) 716-7988

BE  
LS

LOTS A & B OF LOT 1 OF U. V.  
JOHNSON SUB. NW 1/4 OF THE NW 1/4,  
SEC 32, T1N, R7E, BHM, RAPID CITY  
PENNINGTON COUNTY, SOUTH DAKOTA

LARRY DEAN WEICHMANN  
PROPOSED LOTS A & B BR  
8048 SHERIDAN LAKE RD.



Project No.	
Drawn by	
Checked by	
Date	