

08P093

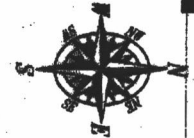
FINAL

Plat of Lots 1 through 10 of Elysian Heights Subdivision and Dedicated Right-of-Way

(Formerly a portion of the N1/2 SW1/4 of Section 21, T1N, R7E, BHM)
located in the N1/2 SW1/4 of Section 21, T1N, R7E, BHM,
Rapid City, Pennington County, South Dakota

Prepared by:
Fisk Land Surveying & Consulting Engineers, Inc.
P.O. Box 8164
Rapid City, SD 57709
(605) 346-1888
Project No. 88-10-02

All residential dwellings shall be equipped with fire suppression sprinkler systems.



1" = 100'

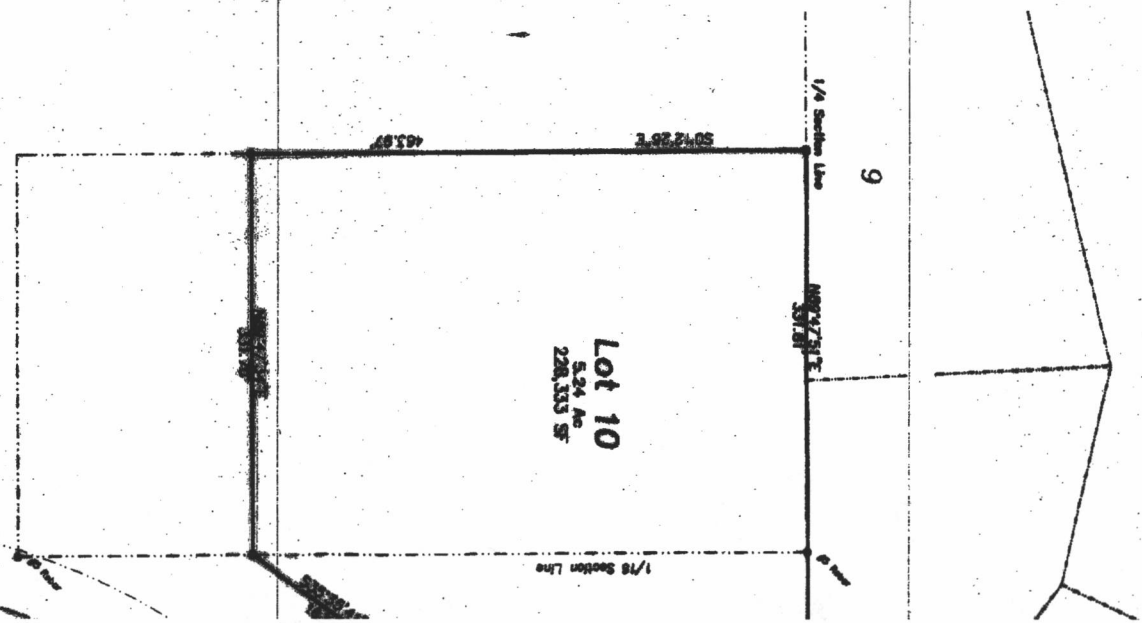
October 12, 2006
Rev. Nov 12, 2006
Rev. Dec. 6, 2006
Rev. Aug. 15, 2007
Rev. January 22, 2008

- = Found Survey Monument marked as noted
- ⊙ = Set Rebar with cap marked "RW Plat 8885"

6' Utility and Minor Drainage Easements on the interior sides of all lot lines.

Carriage Hills Drive and Elysian Court, containing 1.07 Acres more or less, as shown hereon are hereby dedicated as public right-of-way, however, such dedication shall not be construed to mean a donation of the fee of said land.

All Major Drainage Easements Shown Hereon Shall Be Keep Free Of All Obstructions, including But Not Limited To Buildings, Walls, Fences, Hedges, Trees And Shrubs. These Easements Grant To All Public Authorities The Right To Construct, Operate, Maintain, Inspect, And Repair Such Improvements And Structures As It Deems Expedient To Facilitate Drainage From Any Source.



BLK	DEPT	AREA	PERMITS	REVENUE
C1	9744.58'	68.75'	302.88'	N21.54.2
C2	9744.58'	68.75'	302.88'	N11.46.2
C3	5774.5'	42.16'	442.28'	N23.42.2
C4	1408.75'	800.35'	442.28'	N13.27.2
C5	1100.25'	28.82'	402.28'	N25.13.4
C7	3030.66'	24.74'	40.68'	S28.03.2
C8	1013.58'	7.37'	40.68'	N7.03.1
C9	8178.08'	70.88'	51.88'	S7.78.2
C10	8727.82'	47.88'	51.88'	S9.47.2
C11	8727.82'	47.88'	51.88'	S10.74.2
C12	8727.82'	47.88'	51.88'	S12.01.2
C13	8727.82'	47.88'	51.88'	S13.28.2
C14	8727.82'	47.88'	51.88'	S14.55.2

RECEIVED

FEB 09 2008