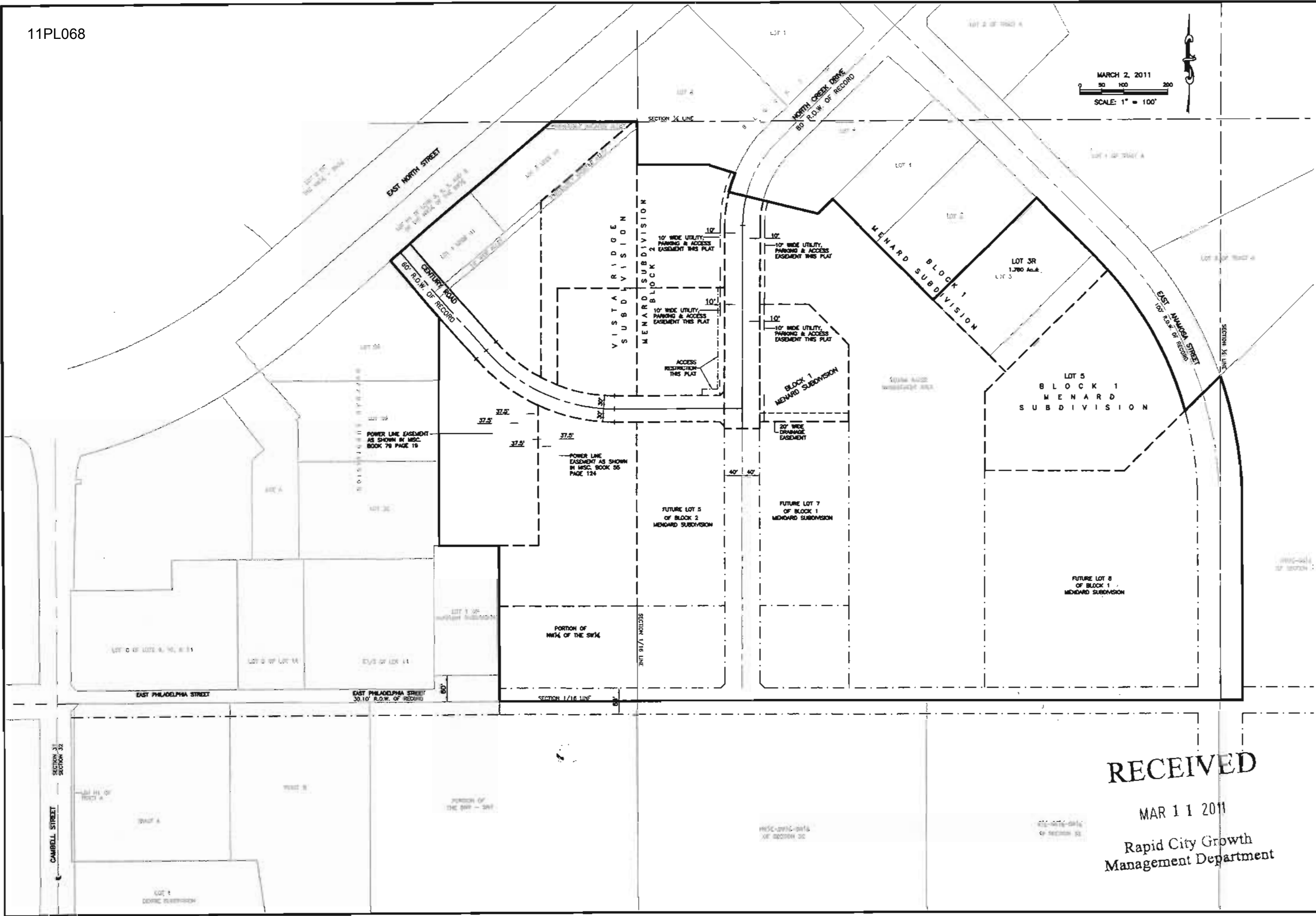


MARCH 2, 2011
 SCALE: 1" = 100'



SPERLICH
 Consulting, Inc.
 420 Columbus St., Suite 1100, St. Louis, MO 63101
 Telephone: 314-404-7144 Fax: 314-404-7145
 E-MAIL: asperlich@sperrlich.com
 Engineering - Surveying - Training

REVISIONS	REVISION	DATE

LEGAL DESCRIPTION:
 PART OF THE 1/4 OF THE SW 1/4 OF SECTION 32, T12N, R10E, S11E, PLAT 11, MENARD SUBDIVISION, SHERMAN COUNTY, MISSOURI.
 SURVEYED BY: SGT
 DATE: 02/11/11

RECEIVED
 MAR 11 2011
 Rapid City Growth
 Management Department

REVISIONED SITE PLAN
EAST PHILADELPHIA STREET EXTENSION
 PROJECT NUMBER **3198.03**
 SHEET **1/1**