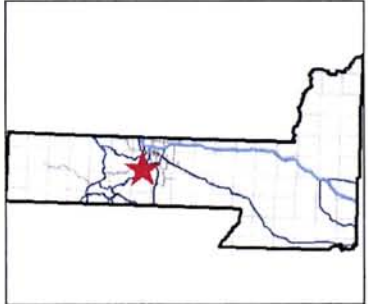
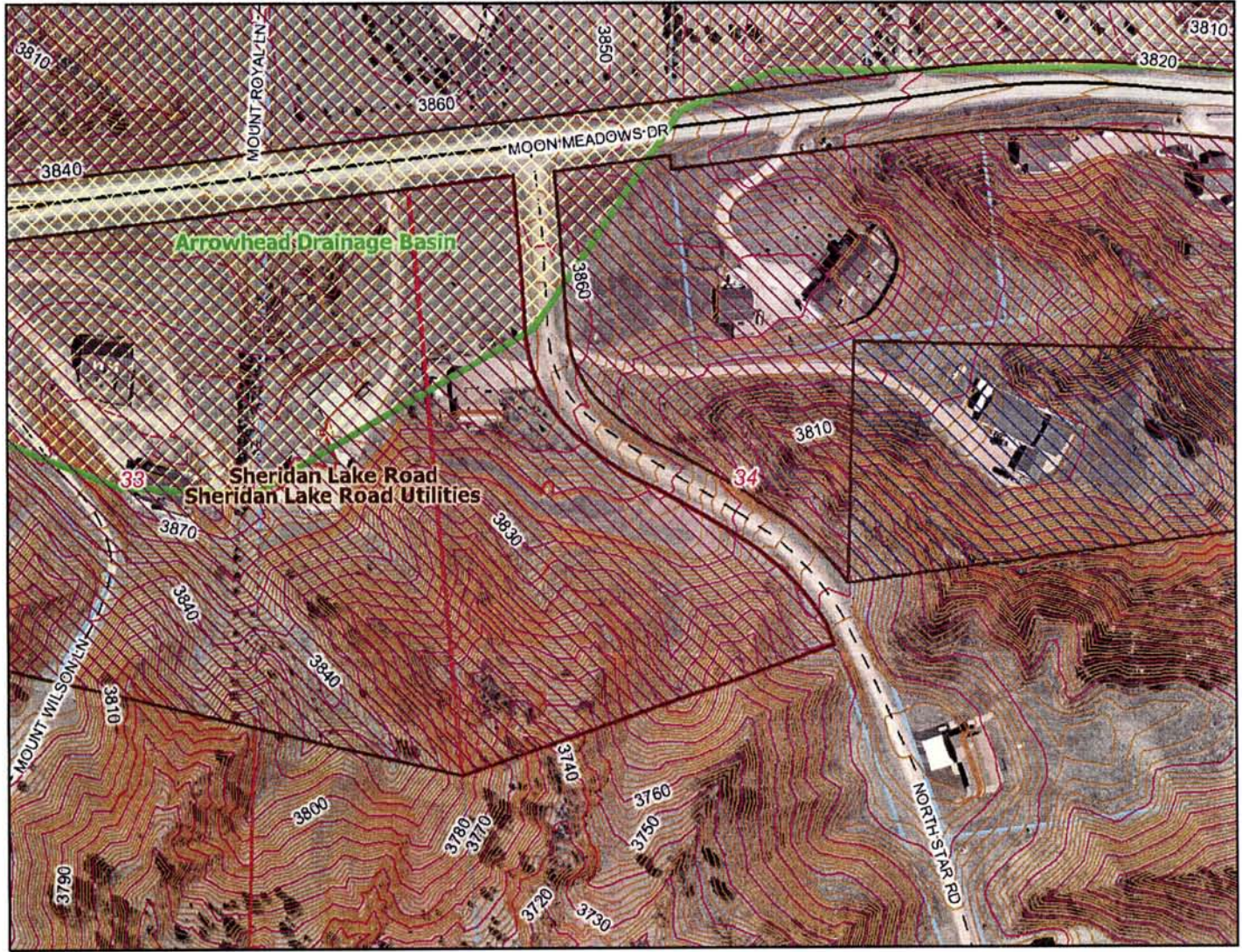


Topography

8133 North Star Rd



Legend

Sewer Connection Fee Areas

- Aamco Transmissions Sanitary Sewer Boring
- Brookfield 10" sewer
- Brookfield 10" Sewer Force Main
- Catron Blvd Sanitary Sewer Extension
- Cliff Dr. Sewer
- Copperfield/Vista
- Copperfield Vista Phase 1B
- Corral Dr. sewer
- Corral Dr. Sewer
- Deadwood Avenue / Lein Street
- Deadwood Avenue Trunk
- Eastridge Estates (Phase 1&2)
- Fifth St. Sanitary Sewer Extension
- Heidiway Lane Sanitary Sewer
- Highway 16 sewer
- Highway 16 Sewer
- Highway 79 Sewer
- Horst Centre Street Sewer Main
- Mallow Street Sanitary Sewer
- Mallridge Subdivision
- MJK Sanitary Sewer Oversize
- Moon Ridge Offsite Sewer
- NE Area SS Interceptor
- North Wildwood Sewer
- Parkview Dr. Sewer
- Parkview Dr Sewer
- Promise Road
- Red Rock Estates Ph3
- Red Rock Lift Station
- Red Rock Meadows Dunsmore Rd
- Samco Road Improvements
- Sheridan Lake Road
- Sheridan Lake Road Utilities
- Southeast Connector Sanitary Sewer
- Southeast Connector Sanitary Sewers
- Southside Drive



Map center: 44° 0' 21.6" N, 103° 16' 13.0" W



Scale: 1:2,460

DISCLAIMER: This map is provided 'as is' without warranty of any representation of accuracy, timeliness, or completeness. The burden for determining accuracy, completeness, timeliness, merchantability, and fitness for or the appropriateness for use rests solely on the user. Rapid City and Pennington County make no warranties, express or implied, as to the use of the map. There are no implied warranties of merchantability or fitness for a particular purpose. The user acknowledges and accepts the limitations of the map, including the fact that the data used to create the map is dynamic and is in a constant state of maintenance, correction, and update. This document does not represent a legal survey of the land. There are no restrictions on the distribution of printed Rapid City/Pennington County maps, other than the City of Rapid City copyright/credit notice must be legible on the print. The user agrees to recognize and honor in perpetuity the copyrights and other proprietary claims for the map(s) established or produced by the City of Rapid City or the vendors furnishing said items to the City of Rapid City.