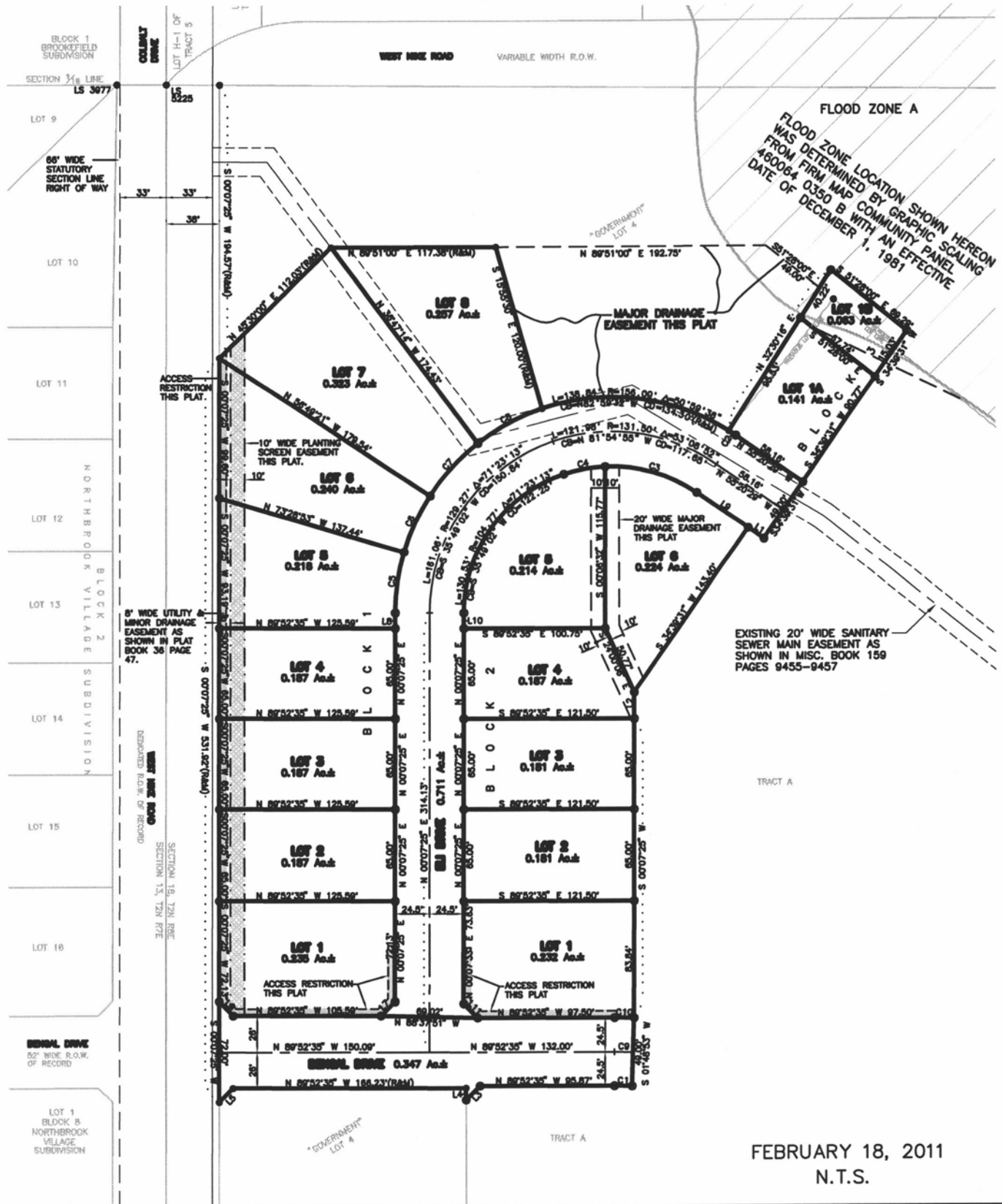


LOTS 1 THROUGH 8 OF BLOCK 1, LOTS 1 THROUGH 6 OF BLOCK 2 AND LOT 1A AND LOT 1B OF BLOCK 3, OF PRAIRIE MEADOWS SUBDIVISION AND MAJOR DRAINAGE EASEMENT OF "GOVERNMENT" LOT 4

(formerly a portion of Tract A of Prairie Meadows Subdivision and a portion of "Government" Lot 4 of Section 18, T2N, R8E, B.H.M.)
LOCATED IN "GOVERNMENT" LOT 4,
SECTION 18, T2N, R8E, B.H.M.,
RAPID CITY, PENNINGTON COUNTY, SOUTH DAKOTA



FLOOD ZONE A
 FLOOD ZONE LOCATION SHOWN HEREON
 WAS DETERMINED BY GRAPHIC SCALING
 FROM FIRM MAP #60064 0350 B WITH A COMMUNITY PANEL
 DATE OF DECEMBER 1, 1981

EXISTING 20' WIDE SANITARY
 SEWER MAIN EASEMENT AS
 SHOWN IN MISC. BOOK 159
 PAGES 9455-9457

FEBRUARY 18, 2011
 N.T.S.