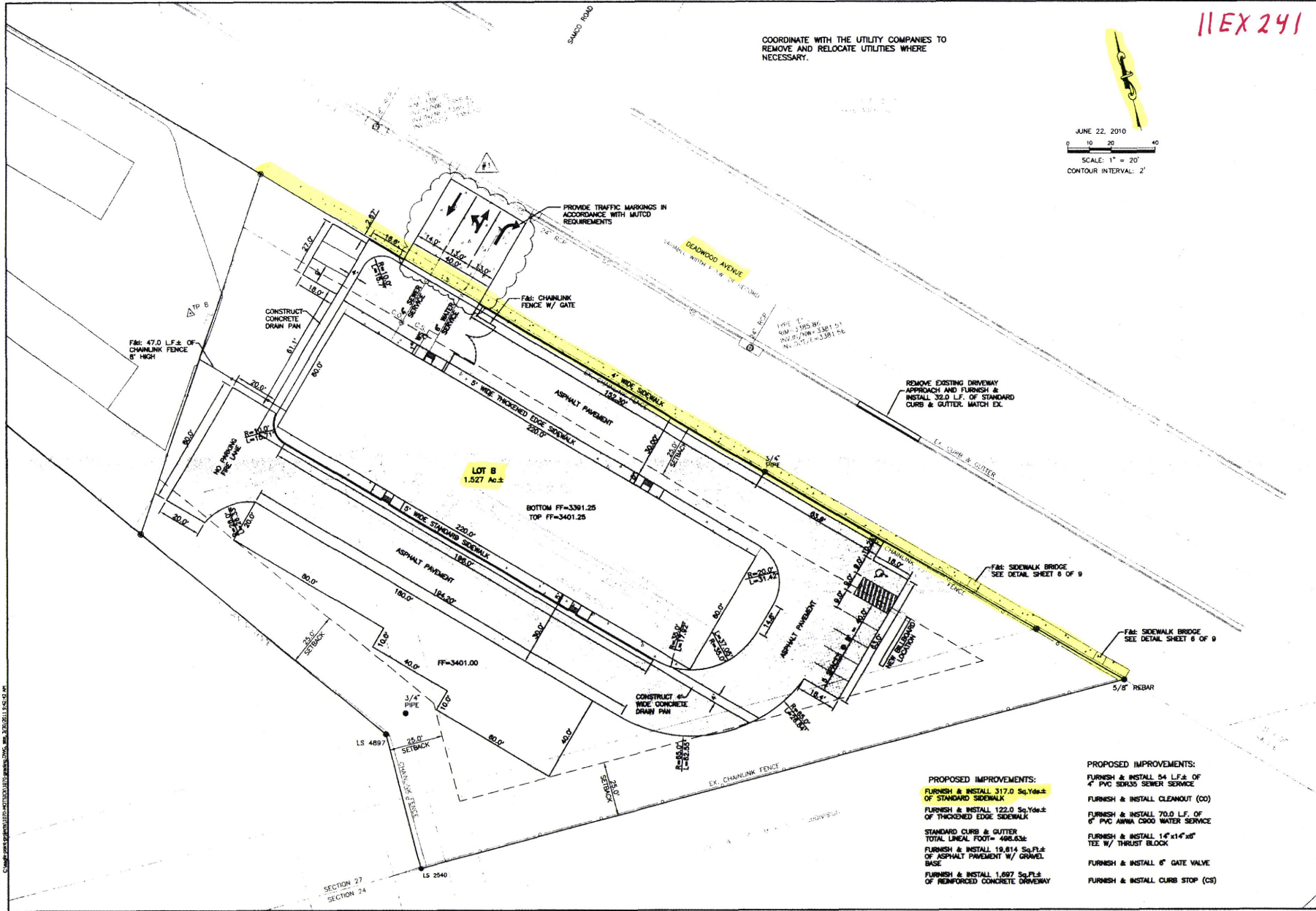
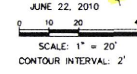


11EX241

COORDINATE WITH THE UTILITY COMPANIES TO REMOVE AND RELOCATE UTILITIES WHERE NECESSARY.



PROPOSED IMPROVEMENTS:
 FURNISH & INSTALL 317.0 Sq.Yds± OF STANDARD SIDEWALK
 FURNISH & INSTALL 122.0 Sq.Yds± OF THICKENED EDGE SIDEWALK
 STANDARD CURB & GUTTER
 TOTAL LINEAL FOOT= 408.63±
 FURNISH & INSTALL 19,814 Sq.Ft± OF ASPHALT PAVEMENT W/ GRAVEL BASE
 FURNISH & INSTALL 1,697 Sq.Ft± OF REINFORCED CONCRETE DRIVEWAY

PROPOSED IMPROVEMENTS:
 FURNISH & INSTALL 54 L.F± OF 4" PVC 300x35 SEWER SERVICE
 FURNISH & INSTALL CLEANNOUT (CO)
 FURNISH & INSTALL 70.0 L.F. OF 6" PVC ANNA CROO WATER SERVICE
 FURNISH & INSTALL 14"x14"x20" TEE W/ THRUST BLOCK
 FURNISH & INSTALL 6" GATE VALVE
 FURNISH & INSTALL CURB STOP (CS)

SPERLICH Consulting, Inc.
 821 Columbus St. Suite 1040
 TEL: (609) 721-4040 FAX: (609) 721-4048
 Engineering, Surveying, Planning

RECEIVED PROFESSIONAL ENGINEERING BOARD
 REG. NO. 2735
 DOUGLAS SPERLICH
 PE IN PENNSYLVANIA

DATE	REVISION	LEGAL DESCRIPTION
01/24/11	ADD SIDEWALK APPROACH	LOT B OF LOT DS-2
03/29/11	CHANGE APPROACH BACK TO ORIGINAL DESIGN	LOT B OF LOT DS-2

SITE PLAN
 PROPOSED LOT B OF LOT DS-2, REVISED OF THE ATTC SUBDIVISION

PROJECT NUMBER: **1070**
 SHEET: **3 / 9**