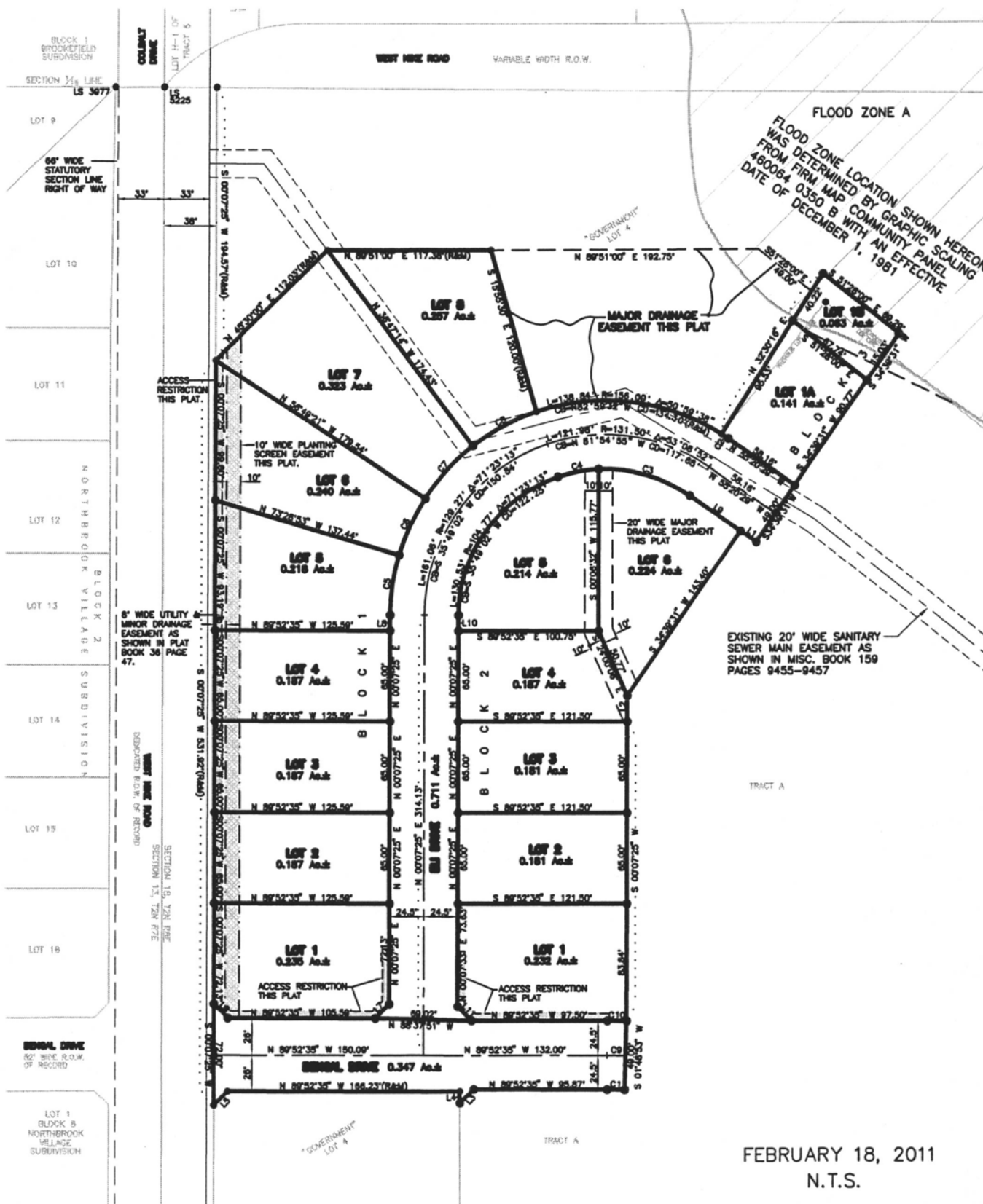


# LOTS 1 THROUGH 8 OF BLOCK 1, LOTS 1 THROUGH 6 OF BLOCK 2 AND LOT 1A AND LOT 1B OF BLOCK 3, OF PRAIRIE MEADOWS SUBDIVISION AND MAJOR DRAINAGE EASEMENT OF "GOVERNMENT" LOT 4

(formerly a portion of Tract A of Prairie Meadows Subdivision and a portion of "Government" Lot 4 of Section 18, T2N, R8E, B.H.M.)

LOCATED IN "GOVERNMENT" LOT 4,  
SECTION 18, T2N, R8E, B.H.M.,  
RAPID CITY, PENNINGTON COUNTY, SOUTH DAKOTA



FEBRUARY 18, 2011  
N.T.S.