

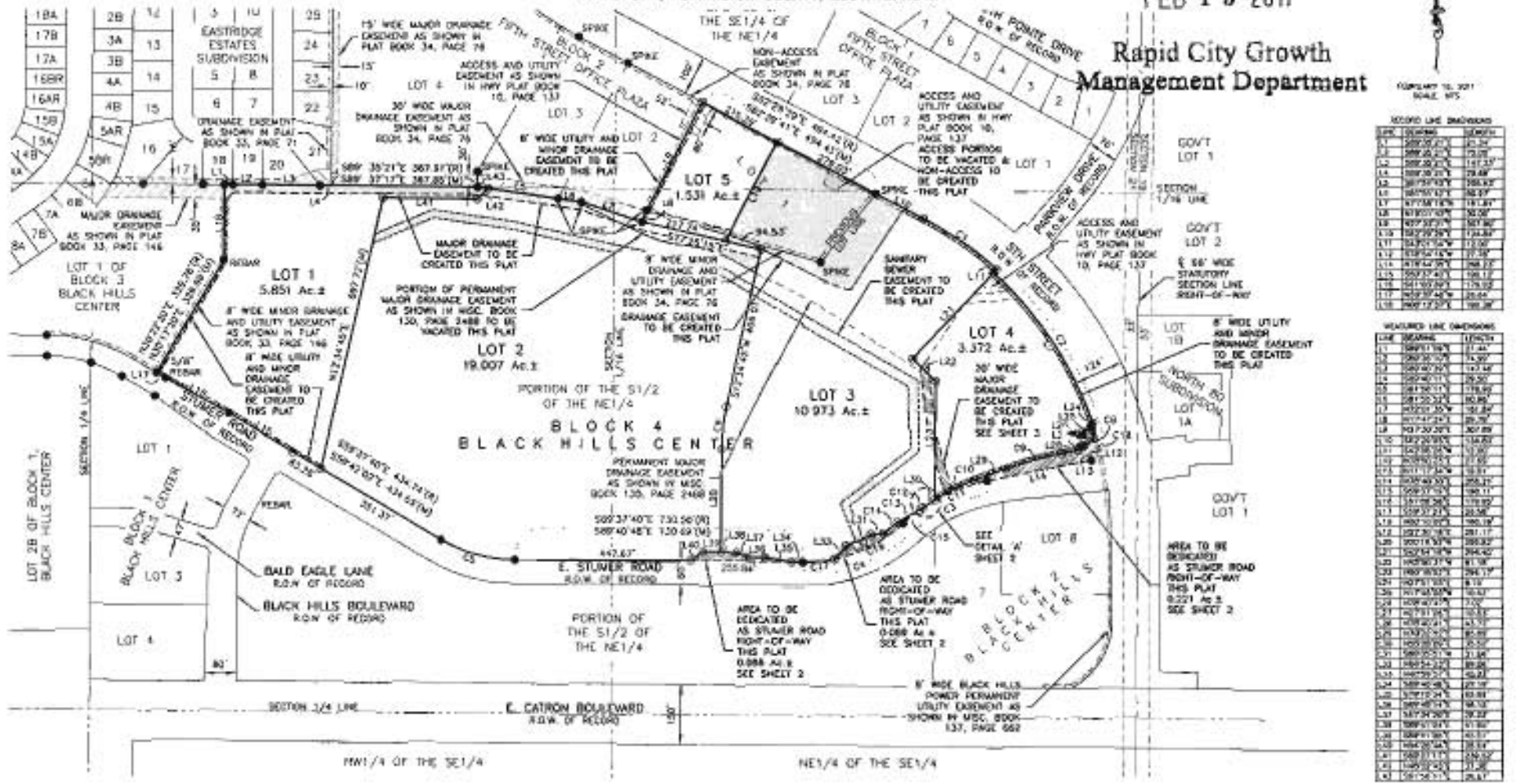
PLAT OF
**LOTS 1 THRU 5, BLOCK 4 OF BLACK HILLS CENTER
 & DEDICATED STUMER ROAD RIGHT-OF-WAY**

(formerly Lot 1 of Block 2 of Fifth Street Office Plaza
 and a Portion of the S1/2 of the NE1/4 of Section 24)
 LOCATED IN THE NE1/4 OF THE NE1/4 AND
 IN THE S1/2 OF THE NE1/4
 SECTION 24, T18, R7E, BHM
 RAPID CITY, PENNINGTON COUNTY, SOUTH DAKOTA

RECEIVED
 ALL PLAT LAYOUT

FEB 15 2011

Rapid City Growth
 Management Department



RECORD LINE DIMENSIONS

LINE NUMBER	BEARING	DISTANCE
L1	S89°52'21"E	25.24
L2	S89°52'21"E	25.24
L3	S89°52'21"E	111.23
L4	S89°52'21"E	79.48
L5	S89°52'21"E	286.97
L6	S89°52'21"E	48.57
L7	S71°51'18"E	19.25
L8	N10°01'40"E	92.50
L9	S89°52'21"E	507.96
L10	S89°52'21"E	124.84
L11	S43°01'50"W	12.50
L12	S25°01'10"W	12.50
L13	S15°01'10"W	12.50
L14	S15°01'10"W	12.50
L15	S89°52'21"E	196.17
L16	S41°00'00"W	175.00
L17	S89°52'21"E	25.24
L18	S89°52'21"E	199.38

MEASURED LINE DIMENSIONS

LINE NUMBER	BEARING	DISTANCE
L1	S89°52'21"E	25.24
L2	S89°52'21"E	25.24
L3	S89°52'21"E	111.23
L4	S89°52'21"E	79.48
L5	S89°52'21"E	286.97
L6	S89°52'21"E	48.57
L7	S71°51'18"E	19.25
L8	N10°01'40"E	92.50
L9	S89°52'21"E	507.96
L10	S89°52'21"E	124.84
L11	S43°01'50"W	12.50
L12	S25°01'10"W	12.50
L13	S15°01'10"W	12.50
L14	S15°01'10"W	12.50
L15	S89°52'21"E	196.17
L16	S41°00'00"W	175.00
L17	S89°52'21"E	25.24
L18	S89°52'21"E	199.38
L19	S89°52'21"E	281.17
L20	S89°52'21"E	284.40
L21	S89°52'21"E	284.40
L22	S89°52'21"E	91.30
L23	S89°52'21"E	284.17
L24	S89°52'21"E	91.30
L25	S89°52'21"E	284.17
L26	S89°52'21"E	91.30
L27	S89°52'21"E	284.17
L28	S89°52'21"E	91.30
L29	S89°52'21"E	284.17
L30	S89°52'21"E	91.30
L31	S89°52'21"E	284.17
L32	S89°52'21"E	91.30
L33	S89°52'21"E	284.17
L34	S89°52'21"E	91.30
L35	S89°52'21"E	284.17
L36	S89°52'21"E	91.30
L37	S89°52'21"E	284.17
L38	S89°52'21"E	91.30
L39	S89°52'21"E	284.17
L40	S89°52'21"E	91.30
L41	S89°52'21"E	284.17
L42	S89°52'21"E	91.30
L43	S89°52'21"E	284.17
L44	S89°52'21"E	91.30
L45	S89°52'21"E	284.17

RECORD CURVE DIMENSIONS

CURVE NUMBER	BEARING	RADIUS	CHORD	CHORD BEARING
C1	S89°52'21"E	111.23	111.23	S89°52'21"E
C2	S89°52'21"E	111.23	111.23	S89°52'21"E
C3	S89°52'21"E	111.23	111.23	S89°52'21"E
C4	S89°52'21"E	111.23	111.23	S89°52'21"E
C5	S89°52'21"E	111.23	111.23	S89°52'21"E
C6	S89°52'21"E	111.23	111.23	S89°52'21"E
C7	S89°52'21"E	111.23	111.23	S89°52'21"E
C8	S89°52'21"E	111.23	111.23	S89°52'21"E
C9	S89°52'21"E	111.23	111.23	S89°52'21"E
C10	S89°52'21"E	111.23	111.23	S89°52'21"E
C11	S89°52'21"E	111.23	111.23	S89°52'21"E
C12	S89°52'21"E	111.23	111.23	S89°52'21"E
C13	S89°52'21"E	111.23	111.23	S89°52'21"E
C14	S89°52'21"E	111.23	111.23	S89°52'21"E
C15	S89°52'21"E	111.23	111.23	S89°52'21"E
C16	S89°52'21"E	111.23	111.23	S89°52'21"E
C17	S89°52'21"E	111.23	111.23	S89°52'21"E
C18	S89°52'21"E	111.23	111.23	S89°52'21"E
C19	S89°52'21"E	111.23	111.23	S89°52'21"E
C20	S89°52'21"E	111.23	111.23	S89°52'21"E

MEASURED CURVE DIMENSIONS

CURVE NUMBER	BEARING	RADIUS	CHORD	CHORD BEARING
C1	S89°52'21"E	111.23	111.23	S89°52'21"E
C2	S89°52'21"E	111.23	111.23	S89°52'21"E
C3	S89°52'21"E	111.23	111.23	S89°52'21"E
C4	S89°52'21"E	111.23	111.23	S89°52'21"E
C5	S89°52'21"E	111.23	111.23	S89°52'21"E
C6	S89°52'21"E	111.23	111.23	S89°52'21"E
C7	S89°52'21"E	111.23	111.23	S89°52'21"E
C8	S89°52'21"E	111.23	111.23	S89°52'21"E
C9	S89°52'21"E	111.23	111.23	S89°52'21"E
C10	S89°52'21"E	111.23	111.23	S89°52'21"E
C11	S89°52'21"E	111.23	111.23	S89°52'21"E
C12	S89°52'21"E	111.23	111.23	S89°52'21"E
C13	S89°52'21"E	111.23	111.23	S89°52'21"E
C14	S89°52'21"E	111.23	111.23	S89°52'21"E
C15	S89°52'21"E	111.23	111.23	S89°52'21"E
C16	S89°52'21"E	111.23	111.23	S89°52'21"E
C17	S89°52'21"E	111.23	111.23	S89°52'21"E
C18	S89°52'21"E	111.23	111.23	S89°52'21"E
C19	S89°52'21"E	111.23	111.23	S89°52'21"E
C20	S89°52'21"E	111.23	111.23	S89°52'21"E



RENNER & ASSOCIATES, LLC.
 616 SIXTH ST. * RAPID CITY, SD 57701
 PHONE: 605/721-7310 * FAX: 605/721-7313
 EMAIL: GARY@RENNERASSOC.COM



PLAT OF
**LOTS 1 THRU 5, BLOCK 4 OF BLACK HILLS CENTER
 & DEDICATED STUMER ROAD RIGHT-OF-WAY**

(formerly Lot 1 of Block 2 of Fifth Street Office Plaza
 and a Portion of the S1/2 of the NE1/4 of Section 24)
 LOCATED IN THE NE1/4 OF THE NE1/4 AND
 IN THE S1/2 OF THE NE1/4
 SECTION 24, T1N, R7E, B1M
 RAPID CITY, PENNINGTON COUNTY, SOUTH DAKOTA

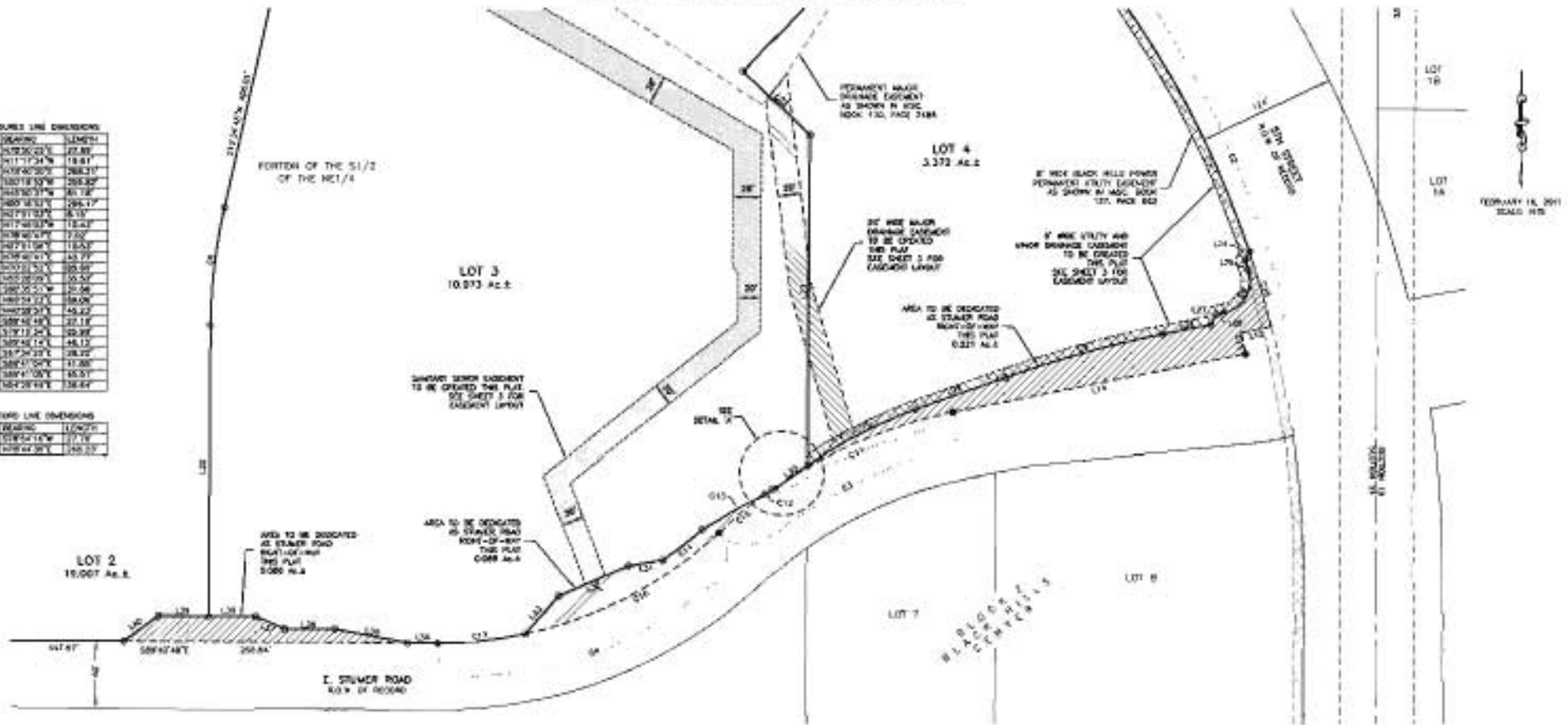
RIGHT-OF-WAY DEDICATION

MEASURED LINE DIMENSIONS

LINE BEARING	LENGTH
L01	S12°36'22"E 25.85
L02	N11°17'34"W 18.81
L03	S09°40'20"E 268.21
L04	S00°18'30"W 268.20
L05	S00°00'00"W 41.18
L06	S88°58'51"E 264.17
L07	N07°01'03"E 6.15
L08	N17°48'03"W 18.81
L09	S08°40'20"E 7.00
L10	N07°11'38"E 15.50
L11	S08°40'20"E 43.77
L12	S00°00'00"E 26.80
L13	S00°00'00"E 26.50
L14	S00°00'00"E 20.26
L15	S00°00'00"E 26.00
L16	S00°00'00"E 45.82
L17	S08°58'49"E 22.18
L18	S10°11'24"E 28.88
L19	S09°40'20"E 44.12
L20	S17°24'23"E 28.20
L21	S00°00'00"E 11.88
L22	S00°00'00"E 16.51
L23	S04°28'14"E 16.82

BEING LINE DIMENSIONS

LINE BEARING	LENGTH
B11	S08°40'20"E 17.18
B12	S08°40'20"E 16.27



MEASURED CURVE DIMENSIONS

CURVE	LENGTH	BEARING	DELTA	CHORD BEARING	CHORD DISTANCE
C01	100.00	S00°00'00"E	180°00'00"	S00°00'00"E	100.00
C02	100.00	S00°00'00"E	180°00'00"	S00°00'00"E	100.00
C03	100.00	S00°00'00"E	180°00'00"	S00°00'00"E	100.00
C04	100.00	S00°00'00"E	180°00'00"	S00°00'00"E	100.00
C05	100.00	S00°00'00"E	180°00'00"	S00°00'00"E	100.00
C06	100.00	S00°00'00"E	180°00'00"	S00°00'00"E	100.00
C07	100.00	S00°00'00"E	180°00'00"	S00°00'00"E	100.00
C08	100.00	S00°00'00"E	180°00'00"	S00°00'00"E	100.00
C09	100.00	S00°00'00"E	180°00'00"	S00°00'00"E	100.00
C10	100.00	S00°00'00"E	180°00'00"	S00°00'00"E	100.00
C11	100.00	S00°00'00"E	180°00'00"	S00°00'00"E	100.00
C12	100.00	S00°00'00"E	180°00'00"	S00°00'00"E	100.00
C13	100.00	S00°00'00"E	180°00'00"	S00°00'00"E	100.00
C14	100.00	S00°00'00"E	180°00'00"	S00°00'00"E	100.00
C15	100.00	S00°00'00"E	180°00'00"	S00°00'00"E	100.00
C16	100.00	S00°00'00"E	180°00'00"	S00°00'00"E	100.00
C17	100.00	S00°00'00"E	180°00'00"	S00°00'00"E	100.00
C18	100.00	S00°00'00"E	180°00'00"	S00°00'00"E	100.00
C19	100.00	S00°00'00"E	180°00'00"	S00°00'00"E	100.00
C20	100.00	S00°00'00"E	180°00'00"	S00°00'00"E	100.00
C21	100.00	S00°00'00"E	180°00'00"	S00°00'00"E	100.00
C22	100.00	S00°00'00"E	180°00'00"	S00°00'00"E	100.00
C23	100.00	S00°00'00"E	180°00'00"	S00°00'00"E	100.00
C24	100.00	S00°00'00"E	180°00'00"	S00°00'00"E	100.00
C25	100.00	S00°00'00"E	180°00'00"	S00°00'00"E	100.00
C26	100.00	S00°00'00"E	180°00'00"	S00°00'00"E	100.00
C27	100.00	S00°00'00"E	180°00'00"	S00°00'00"E	100.00
C28	100.00	S00°00'00"E	180°00'00"	S00°00'00"E	100.00
C29	100.00	S00°00'00"E	180°00'00"	S00°00'00"E	100.00
C30	100.00	S00°00'00"E	180°00'00"	S00°00'00"E	100.00

BEING CURVE DIMENSIONS

CURVE	LENGTH	BEARING	DELTA	CHORD BEARING	CHORD DISTANCE
B01	100.00	S00°00'00"E	180°00'00"	S00°00'00"E	100.00
B02	100.00	S00°00'00"E	180°00'00"	S00°00'00"E	100.00
B03	100.00	S00°00'00"E	180°00'00"	S00°00'00"E	100.00
B04	100.00	S00°00'00"E	180°00'00"	S00°00'00"E	100.00
B05	100.00	S00°00'00"E	180°00'00"	S00°00'00"E	100.00
B06	100.00	S00°00'00"E	180°00'00"	S00°00'00"E	100.00
B07	100.00	S00°00'00"E	180°00'00"	S00°00'00"E	100.00
B08	100.00	S00°00'00"E	180°00'00"	S00°00'00"E	100.00
B09	100.00	S00°00'00"E	180°00'00"	S00°00'00"E	100.00
B10	100.00	S00°00'00"E	180°00'00"	S00°00'00"E	100.00
B11	100.00	S00°00'00"E	180°00'00"	S00°00'00"E	100.00
B12	100.00	S00°00'00"E	180°00'00"	S00°00'00"E	100.00
B13	100.00	S00°00'00"E	180°00'00"	S00°00'00"E	100.00
B14	100.00	S00°00'00"E	180°00'00"	S00°00'00"E	100.00
B15	100.00	S00°00'00"E	180°00'00"	S00°00'00"E	100.00
B16	100.00	S00°00'00"E	180°00'00"	S00°00'00"E	100.00
B17	100.00	S00°00'00"E	180°00'00"	S00°00'00"E	100.00
B18	100.00	S00°00'00"E	180°00'00"	S00°00'00"E	100.00
B19	100.00	S00°00'00"E	180°00'00"	S00°00'00"E	100.00
B20	100.00	S00°00'00"E	180°00'00"	S00°00'00"E	100.00

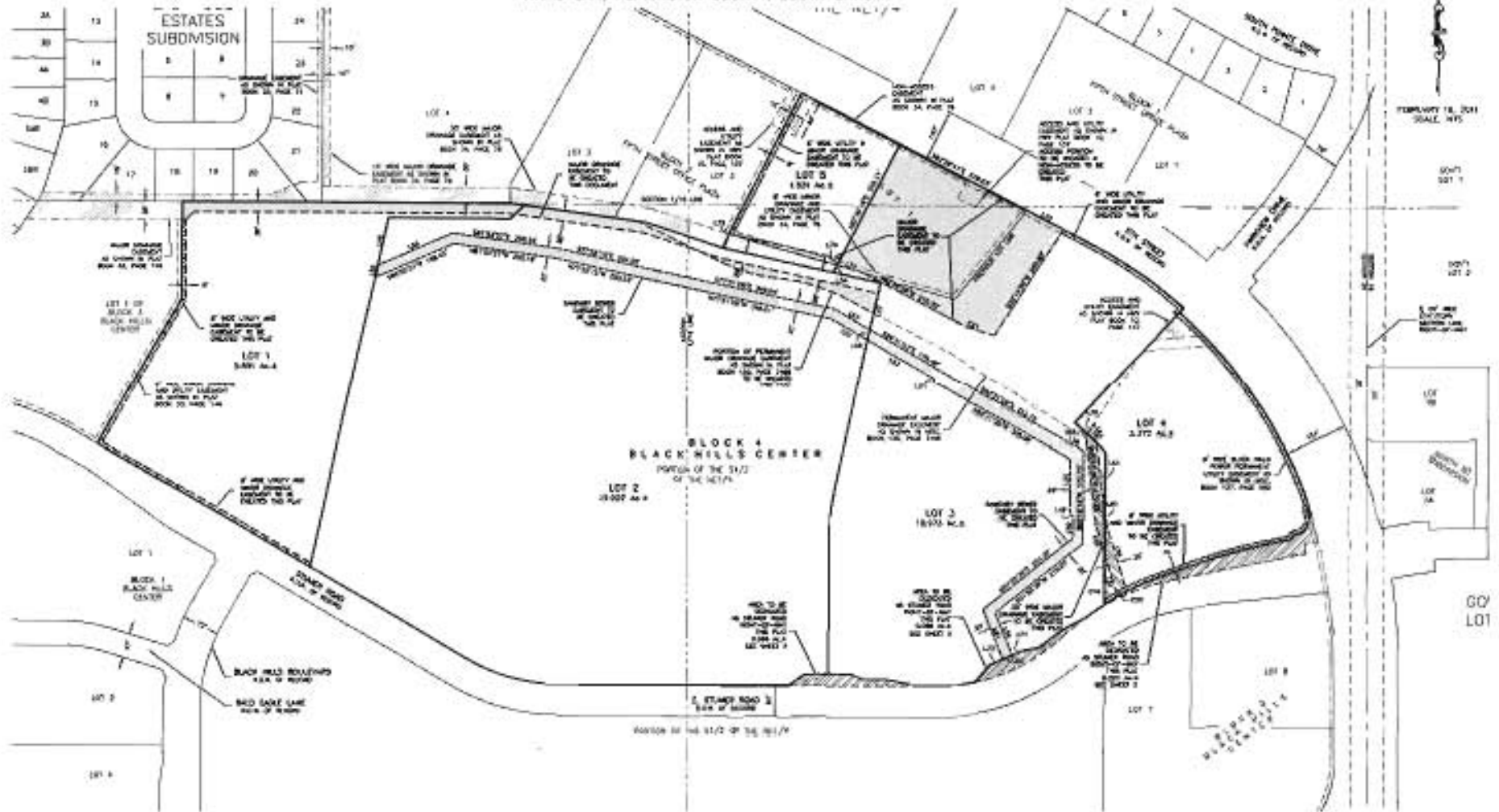


RENNER & ASSOCIATES, LLC.
 616 SIXTH ST. * RAPID CITY, SD 57701
 PHONE: 605/721-7310 * FAX: 605/721-7313
 EMAIL: GARY@RENNERASSOC.COM

PLAT OF
LOTS 1 THRU 5, BLOCK 4 OF BLACK HILLS CENTER
& DEDICATED STUMER ROAD RIGHT-OF-WAY

(formerly Lot 1 of Block 2 of Fifth Street Office Plaza
 and a Portion of the S1/2 of the NE1/4 of Section 24)
 LOCATED IN THE NE1/4 OF THE NE1/4 AND
 IN THE S1/2 OF THE NE1/4
 SECTION 24, T1N, R7E, BHM
 RAPID CITY, PENNINGTON COUNTY, SOUTH DAKOTA

EASEMENT LAYOUT



LINE	BEARING	LENGTH	LINE	BEARING	LENGTH
146	N172°34'45"	84.42	146	N77°30'57"W	124.82
147	N172°34'45"	83.22	147	N07°15'52"E	43.87
148	N172°34'45"	27.22	148	S04°43'25"E	48.82
149	S18°05'30"W	117.17	149	S07°12'25"E	118.74
150	S07°12'25"W	105.17	150	S08°25'25"E	118.87
151	S09°42'12"E	8.57	151	S11°04'00"E	118.37
152	S07°12'25"W	101.25	152	N10°00'00"W	88.17
153	S09°42'12"E	84.17	153	N10°00'00"W	88.17
154	S07°30'57"E	124.82	154	N07°15'52"E	43.87
155	N172°34'45"	84.42	155	S04°43'25"E	48.82
156	N172°34'45"	83.22	156	S07°12'25"E	118.74
157	N172°34'45"	27.22	157	S08°25'25"E	118.87
158	S18°05'30"W	117.17	158	S09°42'12"E	8.57
159	S07°12'25"W	105.17	159	S07°12'25"E	118.74
160	S09°42'12"E	8.57	160	S07°12'25"E	118.74

LINE	CURVE BEARING	DATA	START BEARING	CHORD DISTANCE
151	151.7	117.17	S07°12'25"E	88.17
152	152.1	105.17	S08°25'25"E	88.17
153	153.1	101.25	S09°42'12"E	88.17



RENNER & ASSOCIATES, LLC.

616 SIXTH ST. * RAPID CITY, SD 57701
 PHONE: 605/721-7310 * FAX: 605/721-7313
 EMAIL: GARY@RENNERASSOC.COM



PLAT OF
**LOTS 1 THRU 5, BLOCK 4 OF BLACK HILLS CENTER
 & DEDICATED STUMER ROAD RIGHT-OF-WAY**

(formerly Lot 1 of Block 2 of Fifth Street Office Plaza
 and a Portion of the S1/2 of the NE1/4 of Section 24)
 LOCATED BY THE NE1/4 OF THE NE1/4 AND
 IN THE S1/2 OF THE NE1/4
 SECTION 24, T1N, R7E, B1M
 RAPID CITY, PENNINGTON COUNTY, SOUTH DAKOTA

CERTIFICATES



CERTIFICATE OF JURISDICTION
 State of South Dakota
 County of Pennington S.S.

I, Patrick B. Hall, Managing Member of Renner & Associates, LLC, do hereby certify that we are the owners of the O&G of land shown and described herein, that said land is free from any encumbrances that we did authorize and do hereby approve the survey and within plot of said land, and that the development of said land shall conform to all existing applicable zoning, subdivision, and erosion and sediment control regulations.

Any land shown on the within plat as dedicated to public right-of-way is hereby dedicated to public use and public utility use in such manner, but such dedication shall not be deemed to be in violation of the law of such land.

In witness whereof, I have set my hand and seal.

DAVID STONEROD, LLC

By _____
 Patrick B. Hall, Managing Member

On this ____ day of _____, 20____, before me, a Notary Public, personally appeared _____, known to me to be the person described in the foregoing instrument and acknowledged to me that he/she signed the same.

NOTARY PUBLIC:
 My commission expires: _____

CERTIFICATE OF DIRECTOR OF EDUCATION

I, Director of Education of Pennington County, do hereby certify that I have on record in my office a copy of the within described plat.

Dated this ____ day of _____, 20____.

Director of Education of Pennington County

APPROVED: _____
 Director of Education of Pennington County

CERTIFICATE OF FINANCE OFFICER

I, Finance Officer of the City of Rapid City, do hereby certify that the Growth Management Director of the City of Rapid City has approved the final plat as shown herein.

Dated this ____ day of _____, 20____.

Finance Officer of the City of Rapid City

CERTIFICATE OF FINANCE OFFICER

I, Finance Officer of the City of Rapid City, do hereby certify that all special assessments which are levied upon the within described lands are fully paid according to the records of my office.

Dated this ____ day of _____, 20____.

Finance Officer of the City of Rapid City

CERTIFICATE OF SURVEY
 State of South Dakota
 County of Pennington S.S.

I, Ed Q. Howard, Registered Land Surveyor No. 3722 in the State of South Dakota, do hereby certify that at the request of the owners (joint owners), I have surveyed the tract of land shown, and to the best of my knowledge and belief, the within plat is a representation of said survey. Easements or restrictions of record have been noted or private agreements that are not shown to me are not shown herein.

In witness whereof, I have hereunto set my hand and seal.

Ed Q. Howard, Registered Land Surveyor

Date

CERTIFICATE OF HIGHWAY OR STREET AUTHORITY

The location of the proposed roadway shown herein relative to the Highway or Street as shown herein is hereby approved. Any approaches or crosses to the Highway or Street will require additional approval. Dated this ____ day of _____, 20____.

Signature of Street Authority

CERTIFICATE OF COUNTY TREASURER

I, Treasurer of Pennington County, do hereby certify that all taxes which are due upon the within described lands are fully paid according to the records of my office.

Dated this ____ day of _____, 20____.

Treasurer of Pennington County

CERTIFICATE OF GROWTH MANAGEMENT DIRECTOR

I, Growth Management Director of the City of Rapid City, have released the plat and have found it to conform to the the Subdivision requirements of Chapter 10.02.020 of the Rapid City Municipal Code and as such I have approved this Plat as a Final Plat.

Dated this ____ day of _____, 20____.

Growth Management Director of the City of Rapid City

CERTIFICATE OF REGISTER OF DEEDS
 State of South Dakota
 County of Pennington S.S.

Plat this ____ day of _____, 20____, at _____ o'clock, ____ M. in Book ____ of Plats, Page ____.

Register of Deeds

Page 1



RENNER & ASSOCIATES, LLC.

616 SIXTH ST. * RAPID CITY, SD 57701
 PHONE: 605/721-7310 * FAX: 605/721-7313
 EMAIL: GARY@RENNERASSOC.COM