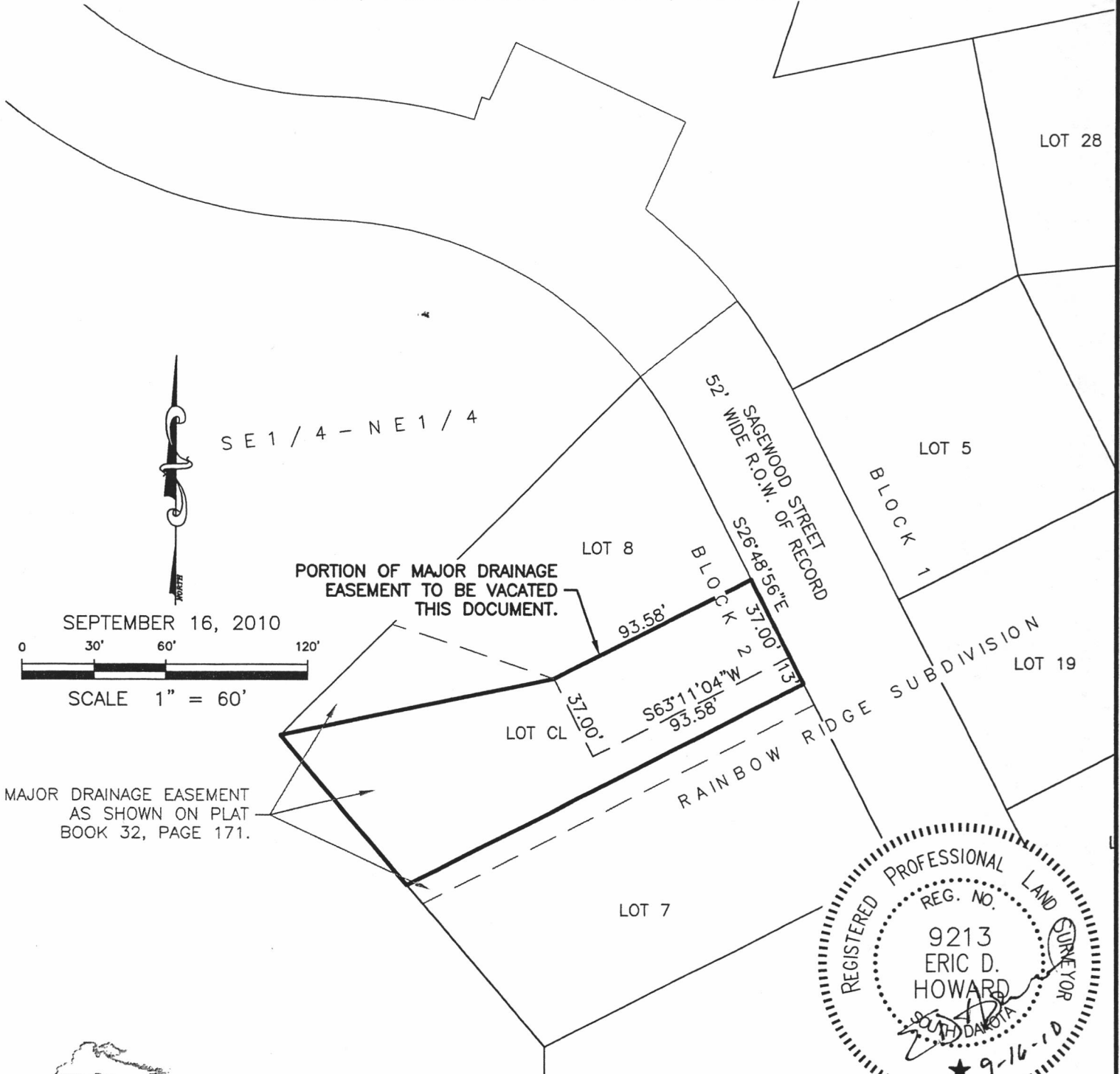
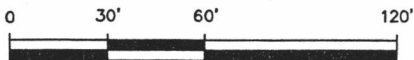


VACATION OF PORTION OF MAJOR DRAINAGE EASEMENT LOCATED IN LOT-CL OF BLOCK 2 OF RAINBOW RIDGE SUBDIVISION

LOCATED IN THE SE1/4 OF THE NE1/4 OF
SECTION 23, T2N, R7E, BHM
RAPID CITY, PENNINGTON COUNTY, SOUTH DAKOTA



SEPTEMBER 16, 2010



SCALE 1" = 60'



CITY HALL 1903

RENNER & ASSOCIATES, LLC.

616 SIXTH ST. * RAPID CITY, SD 57701
PHONE: 605/721-7310 FAX: 605/721-7313
SPEARFISH OFFICE: 605/717-0016

PREPARED FOR:
DREAM DESIGN INTERNATIONAL, INC
528 KANSAS CITY STREET, STE. 4
RAPID CITY, SD 57701
(605) 348-0538