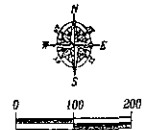


RECEIVED

SEP 25 2009

Rapid City Growth Management Department



 1" = 100'

 January 22, 2008

 Revised Feb 11, 2008

 Revised Mar 13, 2008

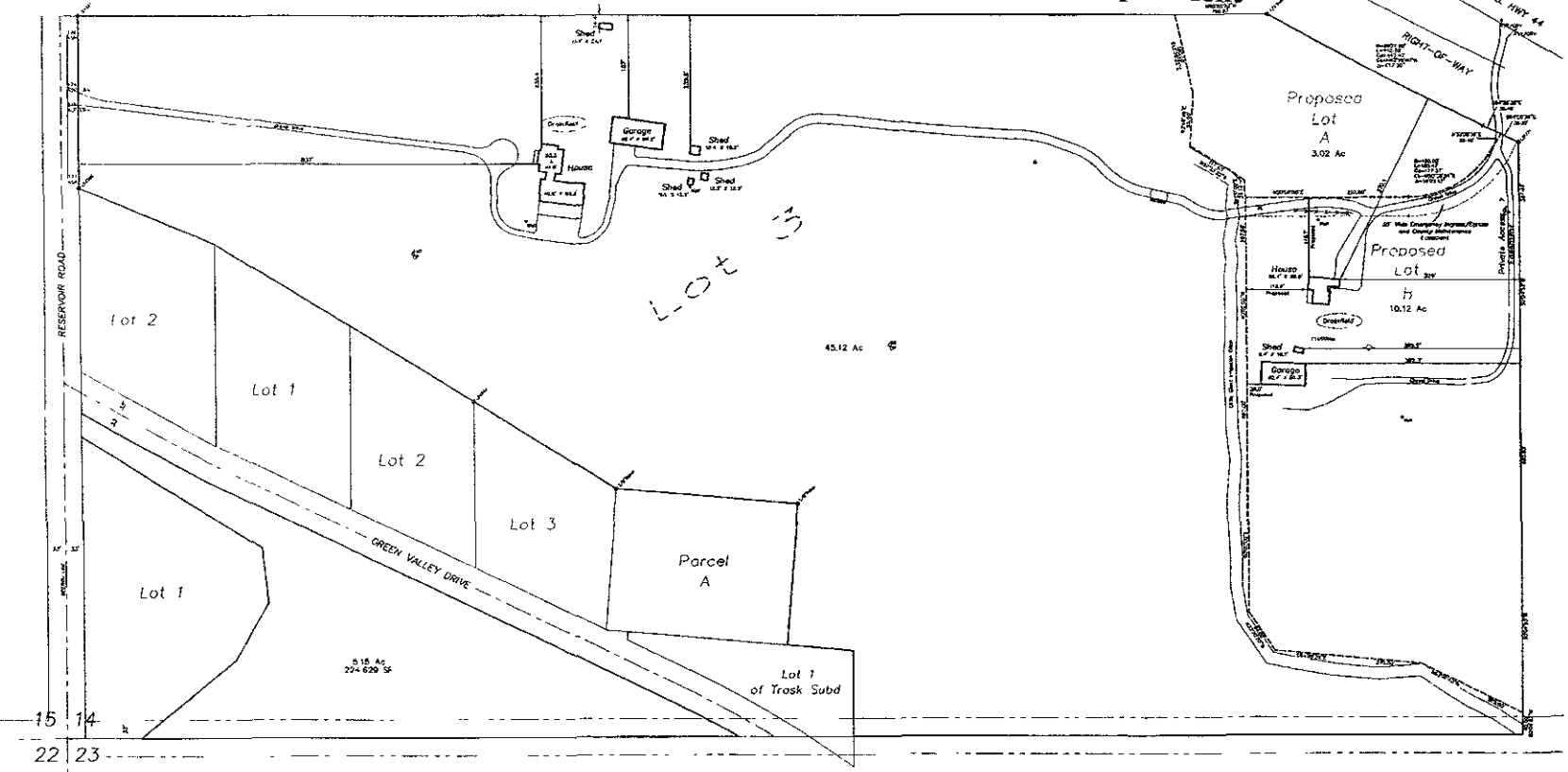
 Revised September 25, 2009

Fisk Land Surveying & Consulting Engineers, Inc.

 1904 5th St. South, Rapid City, SD 57701

 (605) 348-5335 (fax) (605) 341-1112 (cell)

 fisk@fisk-engineers.com



The information herein is copyright material, and specific to the client and purposes as stated. No warranty or guarantee is expressed or implied by any party for any other purpose of any kind except as stated.

Proposed Platting
 Balance of Lot 3 in the S1/2 SW1/4
 Section 14, T1N, R8E, B.H.M.
 Pennington County, South Dakota

Surveyed by	RLM
Date	1/2/08
Drawn by	RWF BL
Date	2/01/08
Checked by	RWF
Revisions	
	2/11/08
	3/13/08
	9/25/09

Project no: 08-01-01

Layout

1 of 1

RECEIVED

SEP 25 2009

Rapid City Growth Management Department

PRELIMINARY