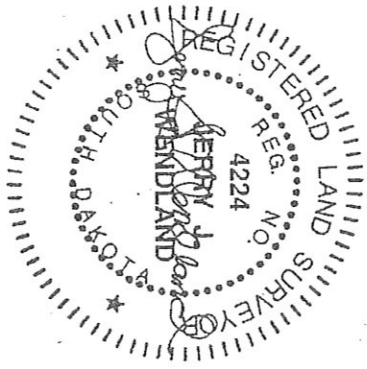


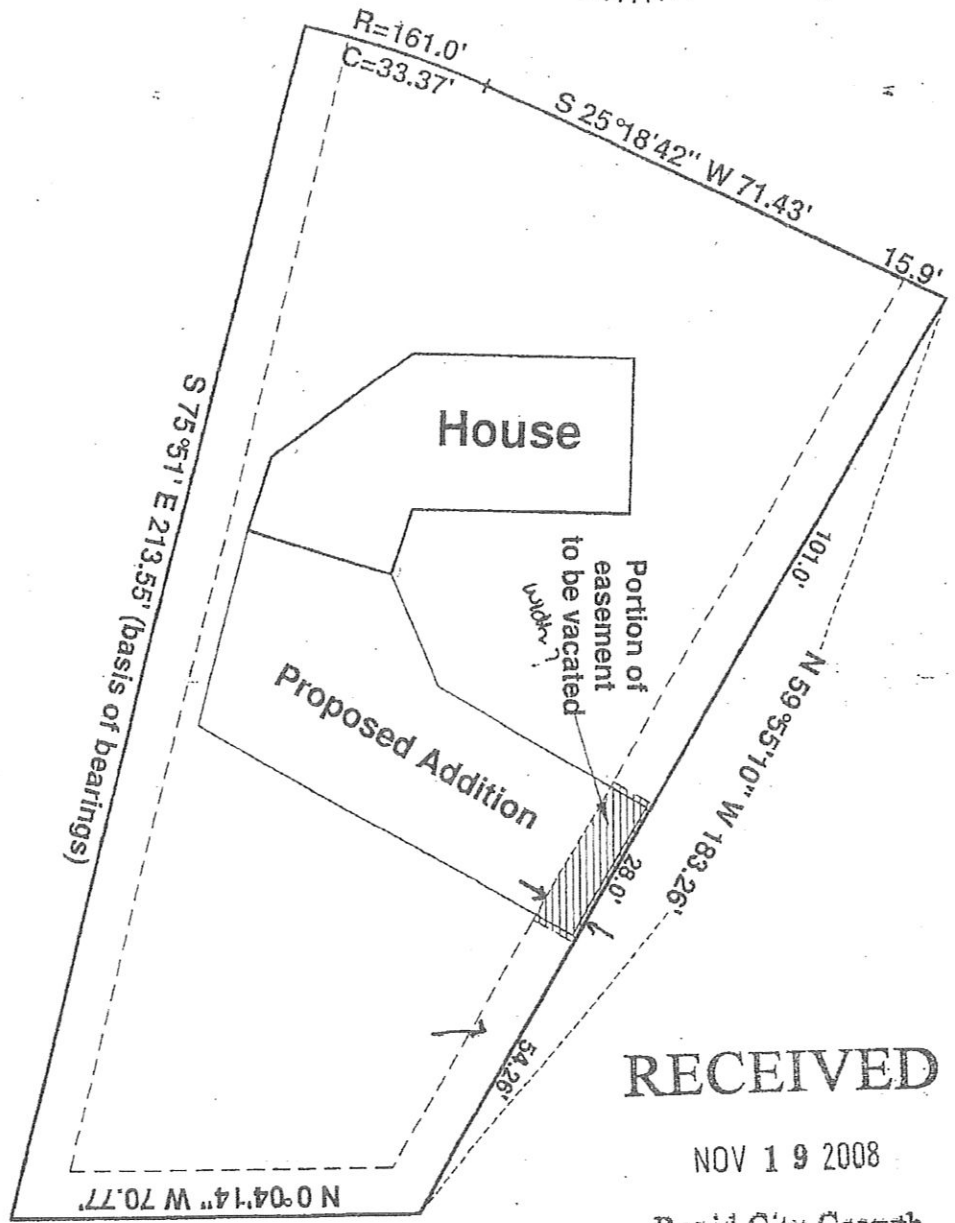
08VE031

JERRY J. WENDLAND  
 LAND SURVEYING  
 6909 Ridgeway Dr.  
 Black Hawk, SD  
 57718-9555  
 Tele: 605-787-4503 / Fax: 605-787-9454

**ANGLE SURVEYS**



1"=30'  
 November 2008



**Exhibit A''**

Vacation of a portion of the utility & drainage easement  
 in Lot 1R, Block 2, Mountain View Subd #2, located  
 in the SE<sup>1</sup>/<sub>4</sub> of Section 3, T1N, R7E, Rapid City,  
 Pennington County, South Dakota

**RECEIVED**

NOV 16 2008

Rapid City Growth  
 Management Department

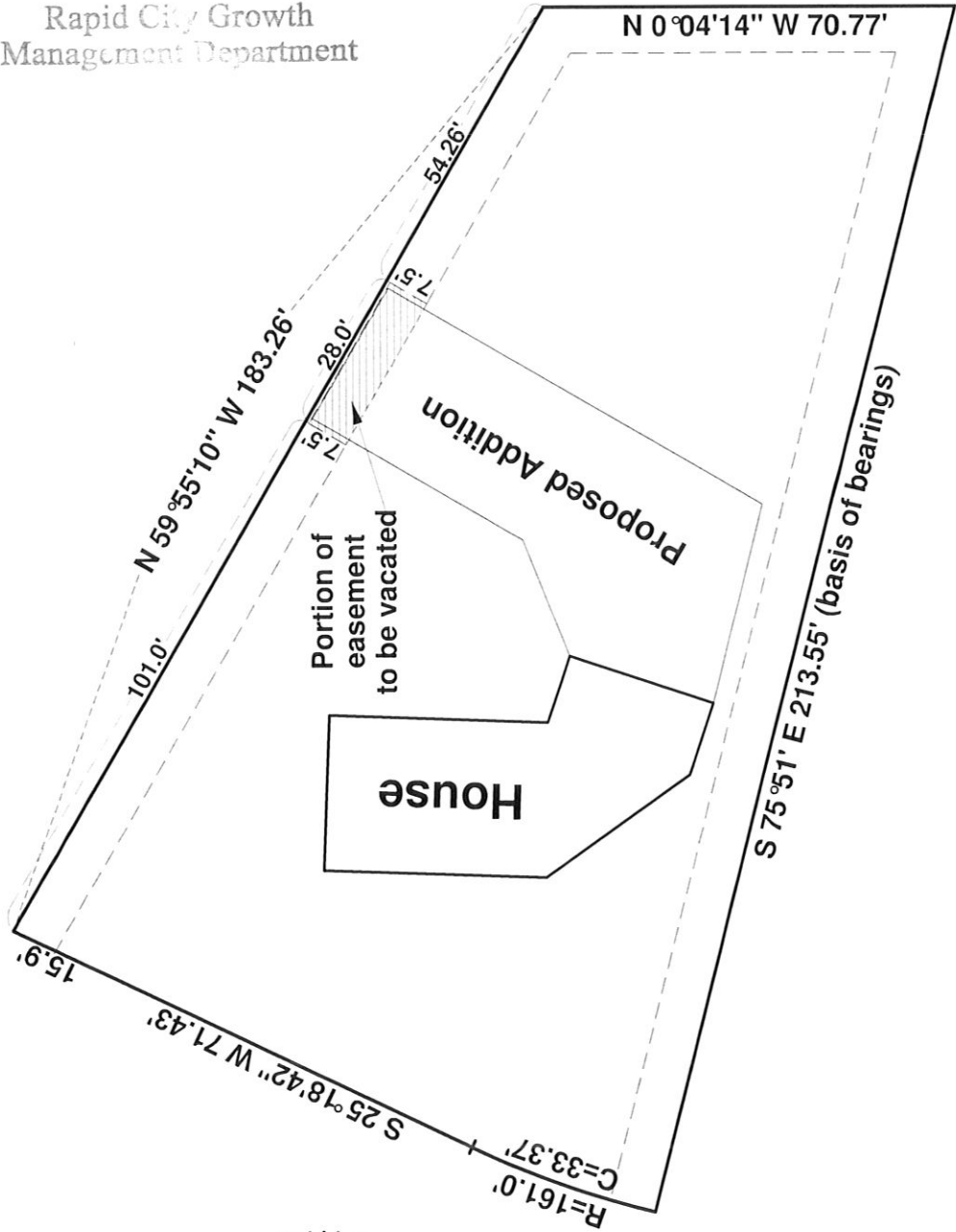
RECEIVED

JAN 07 2009

Rapid City Growth  
Management Department

# Exhibit A"

Vacation of a portion of the utility & drainage easement  
in Lot 1R, Block 2, Mountain View Subd #2, located  
in the SE<sup>1</sup>/<sub>4</sub> of Section 3, T1N, R7E, Rapid City,  
Pennington County, South Dakota



JERRY J. WENDLAND  
LAND SURVEYING  
6909 Ridgeview Dr.  
Black Hawk, SD  
57718-9555  
Tel: 605-787-4509 / Fax: 605-787-9454

**ANGLE SURVEYS**



1" = 30'  
January 2009

