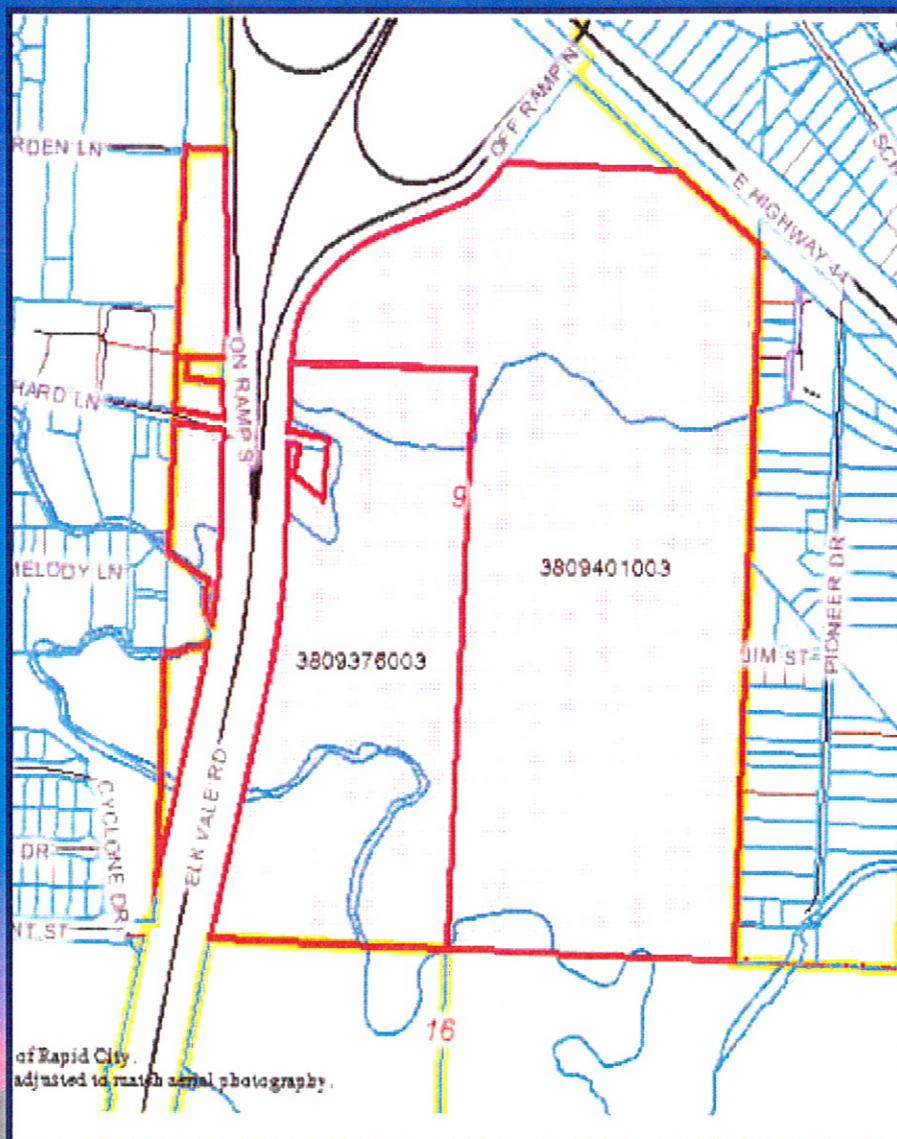
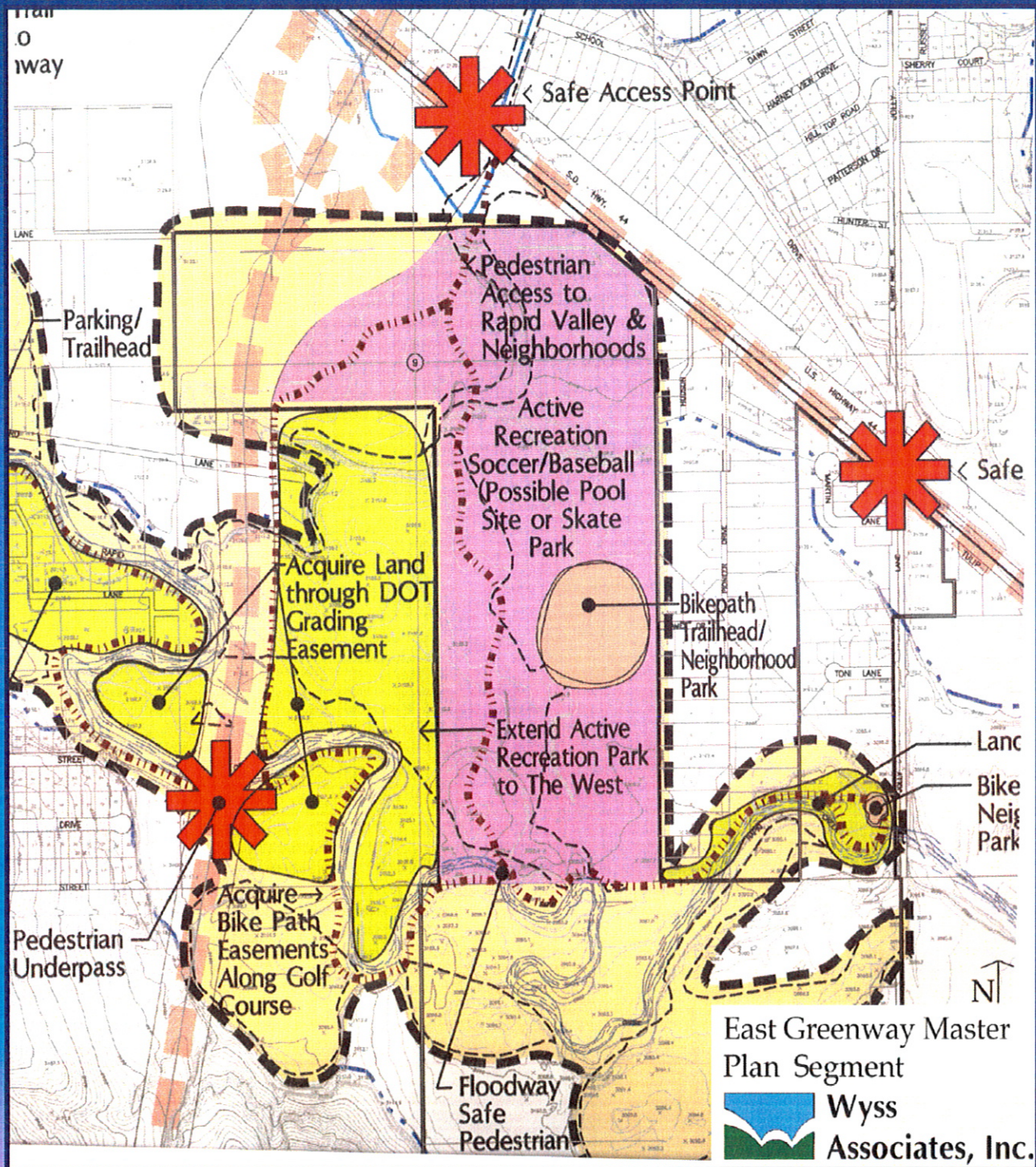


# Wally Byam Land

- No frontage needed
- Flood Plain usage





The East Greenway Master Plan was approved unanimously by the City Council on Dec. 20, 1999 which identified the Wally Byam Site as "Active Recreation" including soccer fields.

# Soccer Structure of Rapid City

**All are non-profit organizations**

- Soccer Rapid City ~ Umbrella Organization
- Rapid City Youth Soccer League
- Rushmore Soccer Club
- Men's Soccer League
- COED League
- Women's League
- SDSMT Men's College Team

**Approximately 4,000 players**

