

# EXHIBIT A 08VE010

## VACATION OF EASEMENT LOT 1 OF FORT HAYES SUBDIVISION

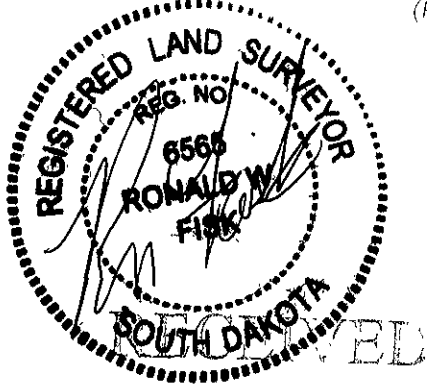
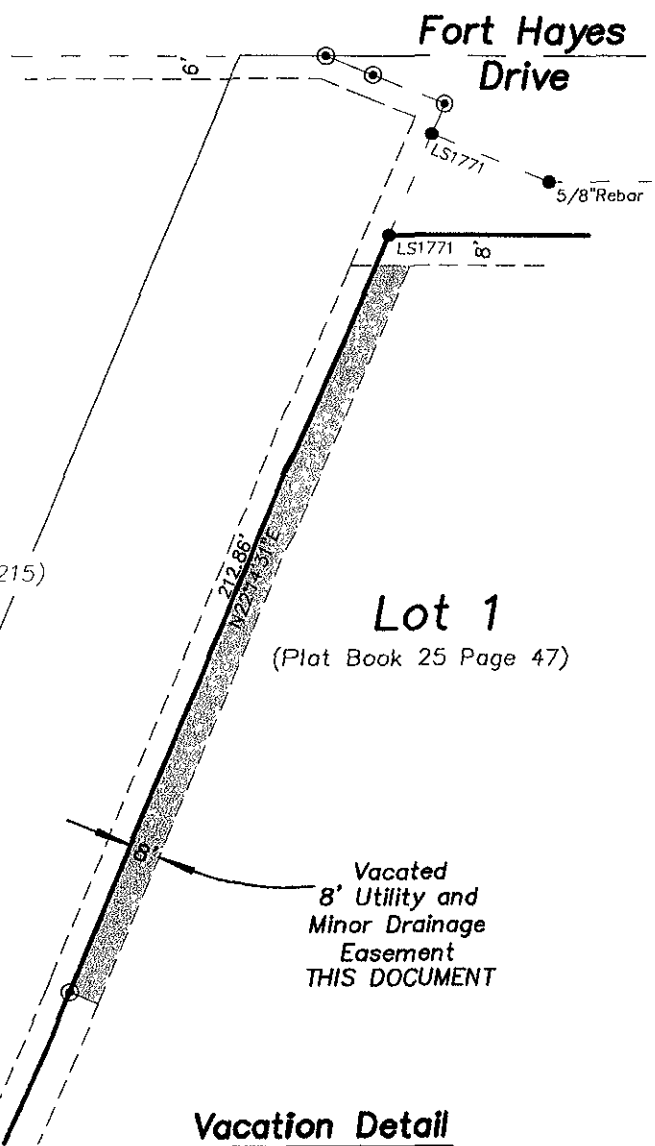
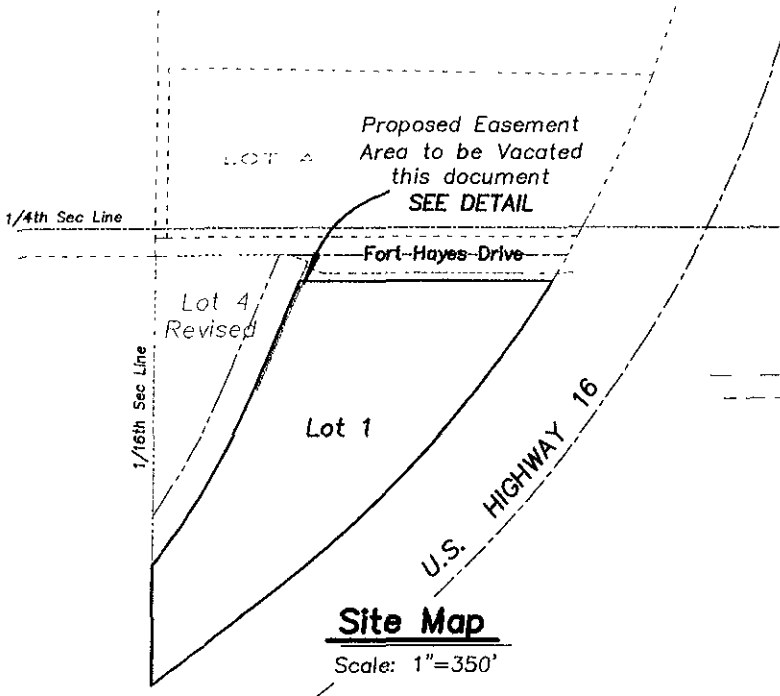
All located in the NE1/4 SE1/4 of Section 34, T1N, R7E, BHM.,  
Pennington County, South Dakota



Scale as noted

### LEGEND

- = Found 5/8" Rebar or as noted
- ⊙ = Found LS 1771 or as noted



MAR 25 2008

Rapid City Growth  
Management Commission

## VACATION OF EASEMENTS

### LOT 4 REVISED OF LOT 4 AND A PORTION OF LOT H1 OF NE1/4 SE1/4

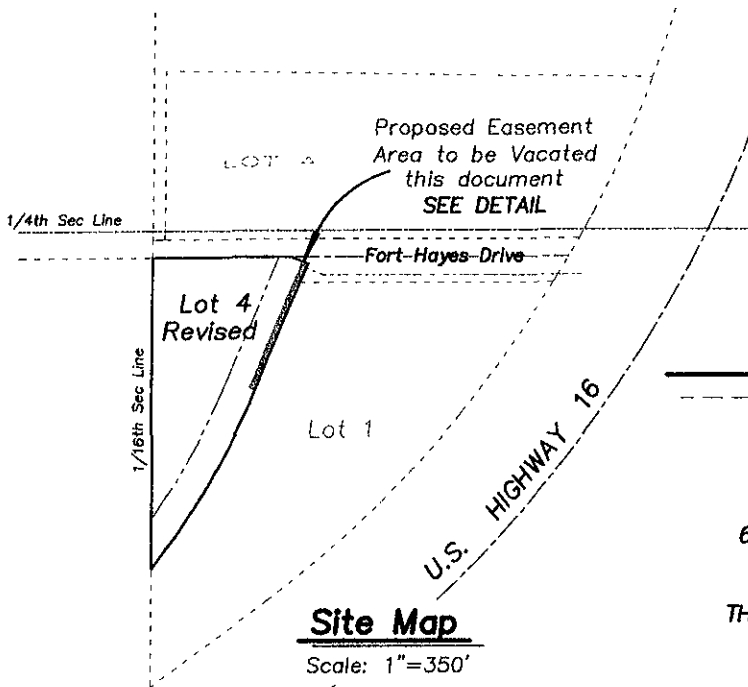
All located in the NE1/4 SE1/4 of Section 34, T1N, R7E, BHM.,  
Pennington County, South Dakota



Scale as noted

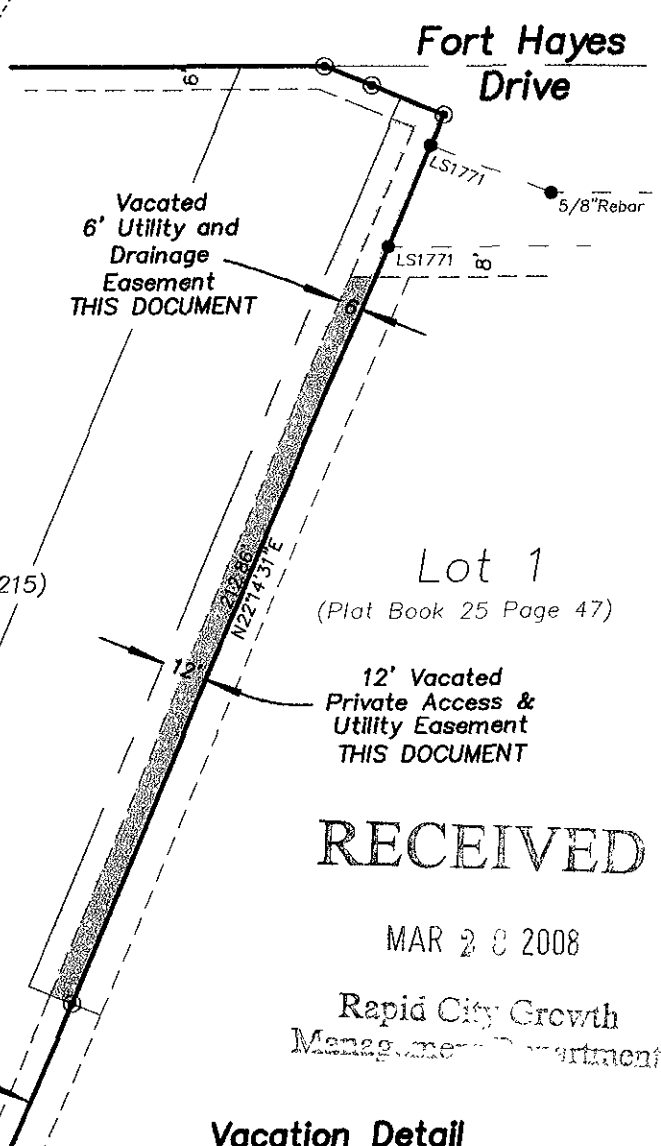
### LEGEND

- = Found 5/8" Rebar or as noted
- ⊙ = Found LS 1771 or as noted



**Lot 4 Revised**  
(Plat Book 12 Page 215)

**Lot 1**  
(Plat Book 25 Page 47)



53' Private Access  
& Utility Easement  
(Plat Book 12 Page 126)

# RECEIVED

MAR 28 2008

Rapid City Growth  
Management Department