

EXHIBIT A
 CURRENT MAJOR STREET PLAN
 EXISTING LACROSSE STREET ALIGNMENT
 LOCATED IN
 SECTIONS 18 AND 19
 T2N, R8E, BHM
 RAPID CITY, SOUTH DAKOTA
 DECEMBER 28, 2007

RECEIVED
 DEC 28 2007
 Rapid City Growth
 Management Department

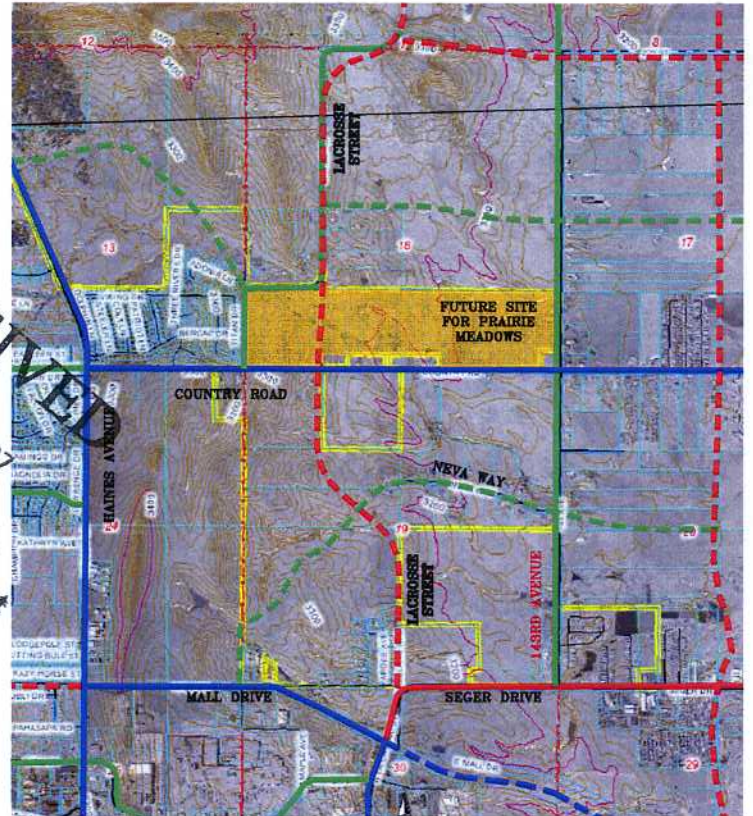


EXHIBIT B
 PROPOSED MAJOR STREET PLAN
 PROPOSED LACROSSE STREET ALIGNMENT
 LOCATED IN
 OF SECTIONS 18 AND 19
 T2N, R8E, BHM
 RAPID CITY, SOUTH DAKOTA
 DECEMBER 28, 2007



**PRELIMINARY
 FOR REVIEW ONLY**

