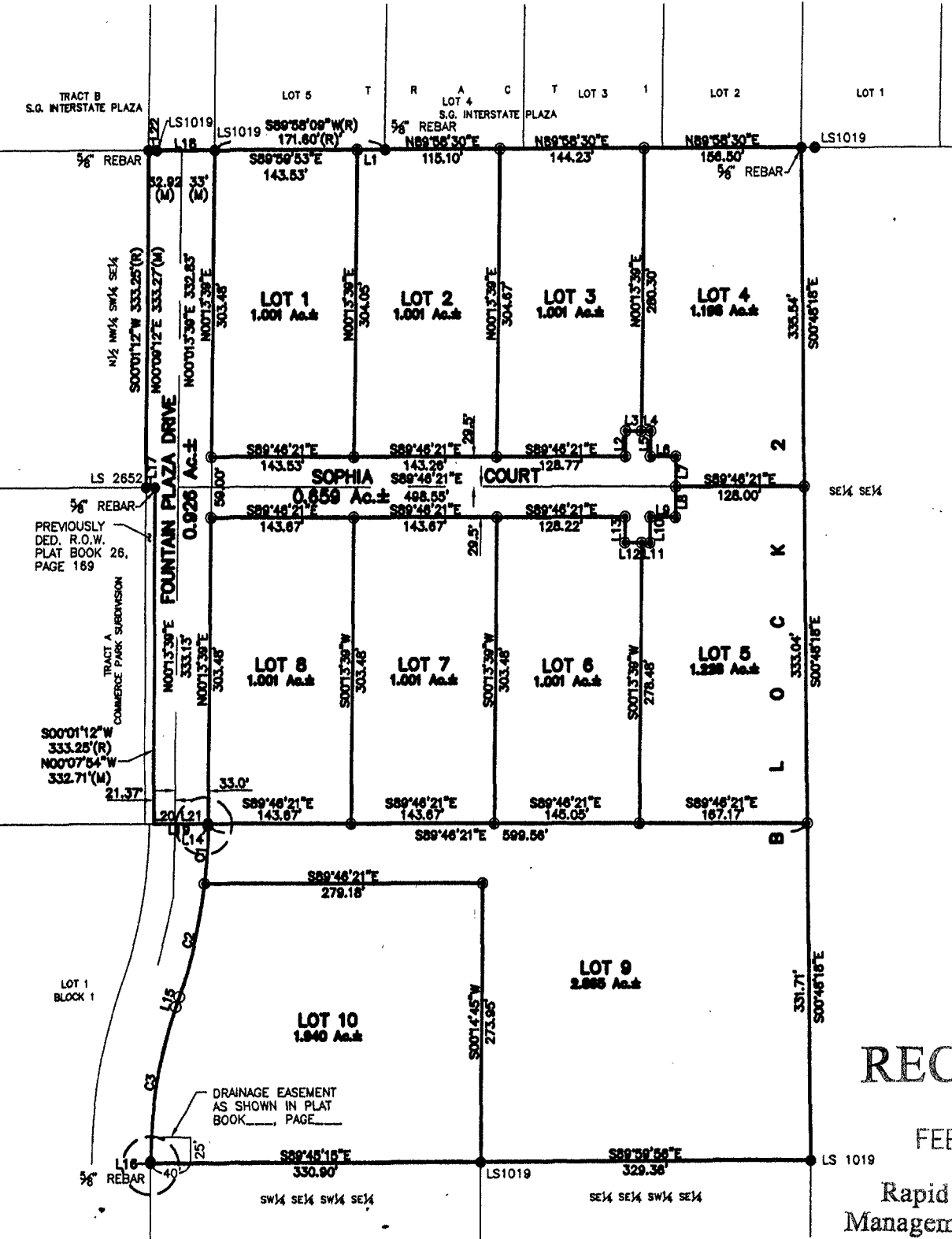


PLAT OF
LOTS 1 THROUGH 10 OF BLOCK 2,
COMMERCE PARK SUBDIVISION

(Formerly a portion of the NE 1/4 of the SW 1/4 of the SE 1/4, and a portion of the N 1/2 of the SE 1/4 of the SW 1/4 of the SE 1/4, all in Section 27, T2N, R7E)
LOCATED IN THE E 1/2 OF THE SW 1/4 OF THE SE 1/4,
SECTION 27, T2N, R7E, B.H.M.,
RAPID CITY, PENNINGTON COUNTY, SOUTH DAKOTA



N.T.S.

RECEIVED

FEB 09 2007

Rapid City Growth
Management Department