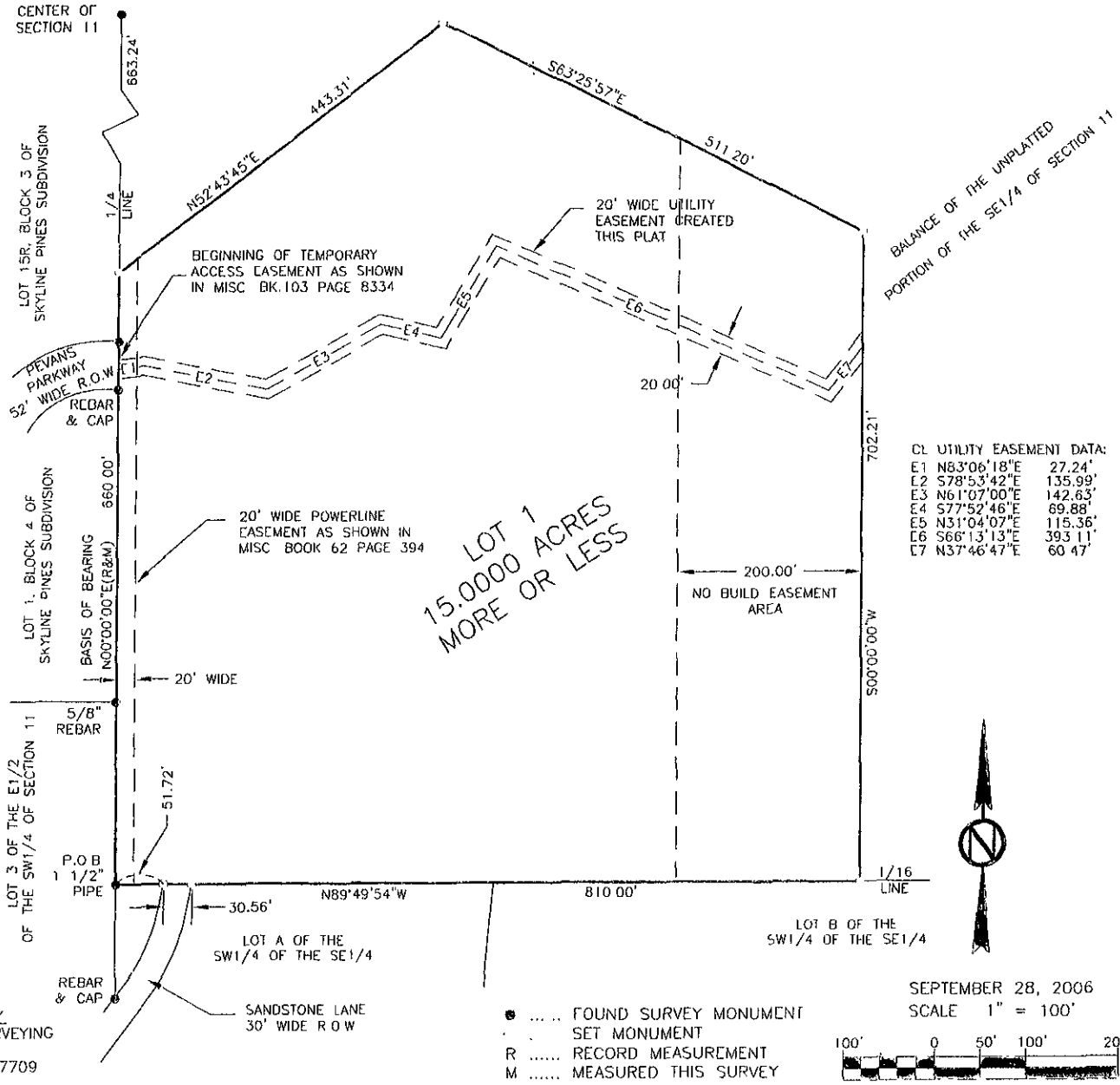


PLAT OF LOT 1 OF THE SE1/4,
OF SECTION 11, T1N, R7E, B.H.M..

RAPID CITY, PENNINGTON COUNTY, SOUTH DAKOTA

FORMERLY A PORTION OF THE UNPLATTED BALANCE OF THE SE1/4 OF SECTION 11, T1N, R7E, B.H.M..



PLAT PREPARED BY
PINHOLT LAND SURVEYING
P.O. BOX 704
RAPID CITY, S.D. 57709
(605) 394-7703

Utility and Minor Drainage easements - 8' on the interior side of all front, side, and rear lot lines.

RECEIVED

SEP 29 2006

Rapid City South
Management Department