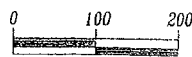


Plat of Elk Meadows Subdivision - including 06R2019

- Lots 1 thru 5 of Block 1,
- Lots 1 thru 10 of Block 2,
- Lots 1 thru 4 of Block 3,
- Lots 1 and 26 of Block 6,
- Lot 1 of Block 7,
- Lots 1 and 36 thru 41 of Block 8,
- Lots 1 thru 11 of Block 9,
- Lots 1 thru 13 of Block 10,
- Lots 1 thru 30 of Block 11 and
- Lot A and Lots 1 thru 23 of Block 12,
- and Dedicated Right-of-Way

All major drainage easements shown hereon shall be kept free of all obstructions including but not limited to buildings, wells, fences, hedges, trees & shrubs. These easements grant to all public authorities the right to construct, operate, maintain, inspect, and repair such improvements and structures as it deems expedient to facilitate drainage from any source.



1" = 100'  
 June 7, 2006  
 Basis of Bearings Assumed from Previous Surveys and confirmed by Solar Observation

located in the E1/2 NE1/4 of Section 21  
 TIN, RBE, BHM, Rapid City, Pennington County, South Dakota  
 Prepared by:  
 Fisk Land Surveying & Consulting Engineers, Inc.  
 P.O. Box 8164  
 Rapid City, SD 57709  
 (605) 348-1938  
 Project # 08-05-07

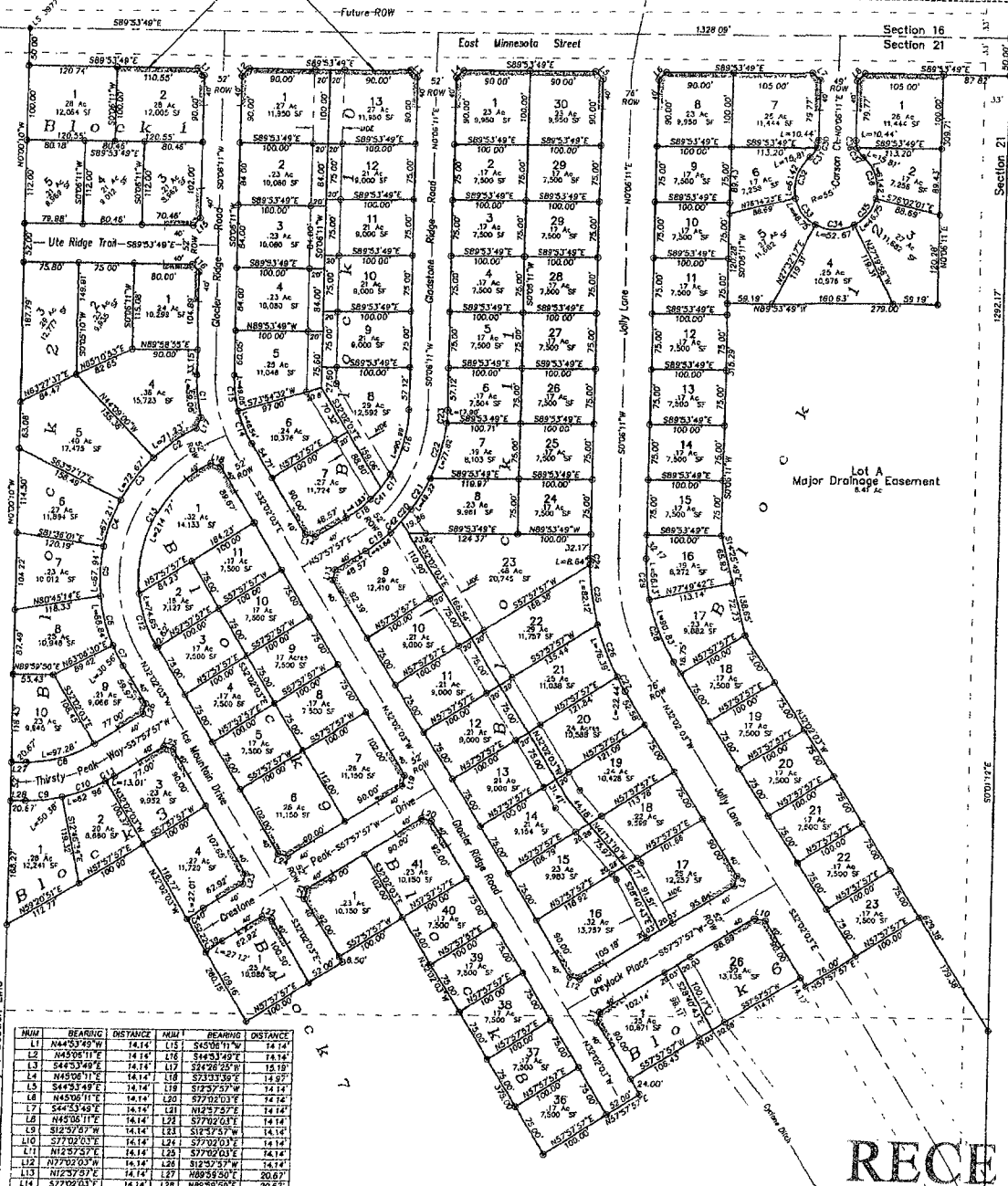
NOTE: The rear lot lines in Block 10 and portions of Block 11 represent the centerline of a 40' wide Major Drainage Easement (aka Cyclone Ditch). The side lot line annotations are to the Witness Corners located at the edge of the easement.

9' Utility and Minor Drainage Easements on the interior sides of all lot lines

- Legend
- = Found Survey Monument as noted
  - = Found Brass Cap (BLM - 1949)
  - = Set Rebar/Cap "RW FISK LS 6565"
  - = Major Drainage Easement

Access Restriction (See Notation at each Intersection)

East Minnesota Street (S1/2), Glacier Ridge Road, Gladstone Ridge Road, Jolly Lane, Carson Court, Ice Mountain Drive, Ute Ridge Trail, Thirsty Peak V Crestone Peak Drive and Greylock Place, containing 9.09 Acres more or less, as shown hereon are herewith dedicated as public right-of-ways, however, such dedication shall not be construed to mean a donation of the fee of said land.



1/16 Section Line

N/M	BEARING	DISTANCE	N/M	BEARING	DISTANCE
L1	N48°53'49"W	14.14	L12	S45°06'17"W	14.14
L2	N48°53'49"W	14.14	L13	S45°06'17"W	14.14
L3	S44°53'49"E	14.14	L14	S24°28'28"W	14.18
L4	N48°56'11"E	14.14	L15	S73°03'36"E	14.97
L5	N48°53'49"E	14.14	L16	S69°57'57"W	14.14
L6	N48°56'11"E	14.14	L17	S77°02'03"E	14.14
L7	S44°53'49"E	14.14	L18	N12°57'57"E	14.14
L8	N48°56'11"E	14.14	L19	S77°02'03"E	14.14
L9	S12°57'57"W	14.14	L20	S12°57'57"W	14.14
L10	S77°02'03"E	14.14	L21	S77°02'03"E	14.14
L11	N12°57'57"E	14.14	L22	S77°02'03"E	14.14
L12	N72°07'03"W	14.14	L23	S12°57'57"W	14.14
L13	N12°57'57"E	14.14	L24	N89°59'59"E	206.67
L14	S77°02'03"E	14.14	L25	N89°59'59"E	206.67

N/M	DELTA	ARC	RADIUS	BEARING	DISTANCE	N/M	DELTA	ARC	RADIUS	BEARING	DISTANCE
C1	14°58'21"	58.09'	228.00'	S72°30'07"E	58.69'	C22	19°43'42"	77.92'	228.00'	N14°30'22"E	77.43'
C2	18°03'34"	71.23'	228.00'	S54°52'47"W	70.94'	C23	13°22'20"	17.90'	228.00'	N22°21'21"E	17.90'
C3	16°28'25"	62.97'	228.00'	S58°30'19"W	78.35'	C24	12°55'25"	8.64'	338.00'	S89°37'47"E	8.64'
C4	17°02'17"	67.21'	228.00'	S48°54'10"W	86.86'	C25	13°52'27"	22.77'	338.00'	S89°37'47"E	22.77'
C5	17°13'30"	67.94'	228.00'	S14°38'38"W	87.69'	C26	12°56'54"	26.30'	338.00'	S21°42'54"E	26.22'

RECEIVED  
 JUN 10 2006