



# Boschee Engineering<sup>PW053006-21</sup>

520 Kansas City Street, Suite 307

(605) 342-8747

E-mail: [boschee\\_eng@midconetwork.com](mailto:boschee_eng@midconetwork.com)

June 20, 2006

Dirk Jablonski, P.E.  
Public Works Director  
300 Sixth Street  
Rapid City, SD 57701

Dear Mr Jabonski

After the recent storm I reviewed the street drainage issue located at along Enchantment Road. Due to the volume and high velocity of water running down the street, the water jumps the curb and flows around the PRV station at this location. It is my understanding the curb opening was placed in this location to provide a storm water outfall into the natural drainage way that exists to the north and to remove storm runoff from the street to meet the street drainage criteria at this point.

Sincerely,

Roy E. Boschee, PE  
Boschee Engineering



# CITY OF RAPID CITY

RW053006-21

## Engineering Services

300 Sixth Street

Rapid City, SD 57701-2724

Telephone: (605) 394-4154 FAX: (605) 394-6636

Direct Phone: (605) 394-5377 Ext. 219 Email: larry.chilstrom@rcgov.org

May 12, 2006

TO: THE PUBLIC WORKS COMMITTEE

FROM: LARRY V. CHILSTROM, PLS, PROJECT ADMINISTRATOR

RE: TO CONSIDER ORDERING IN SIDEWALK AT 730 ENCHANTMENT DRIVE

Back ground: Engineering Service's has received a complaint of missing sidewalk at this address. The sidewalk is discontinuous with approximately 32 lineal feet missing.

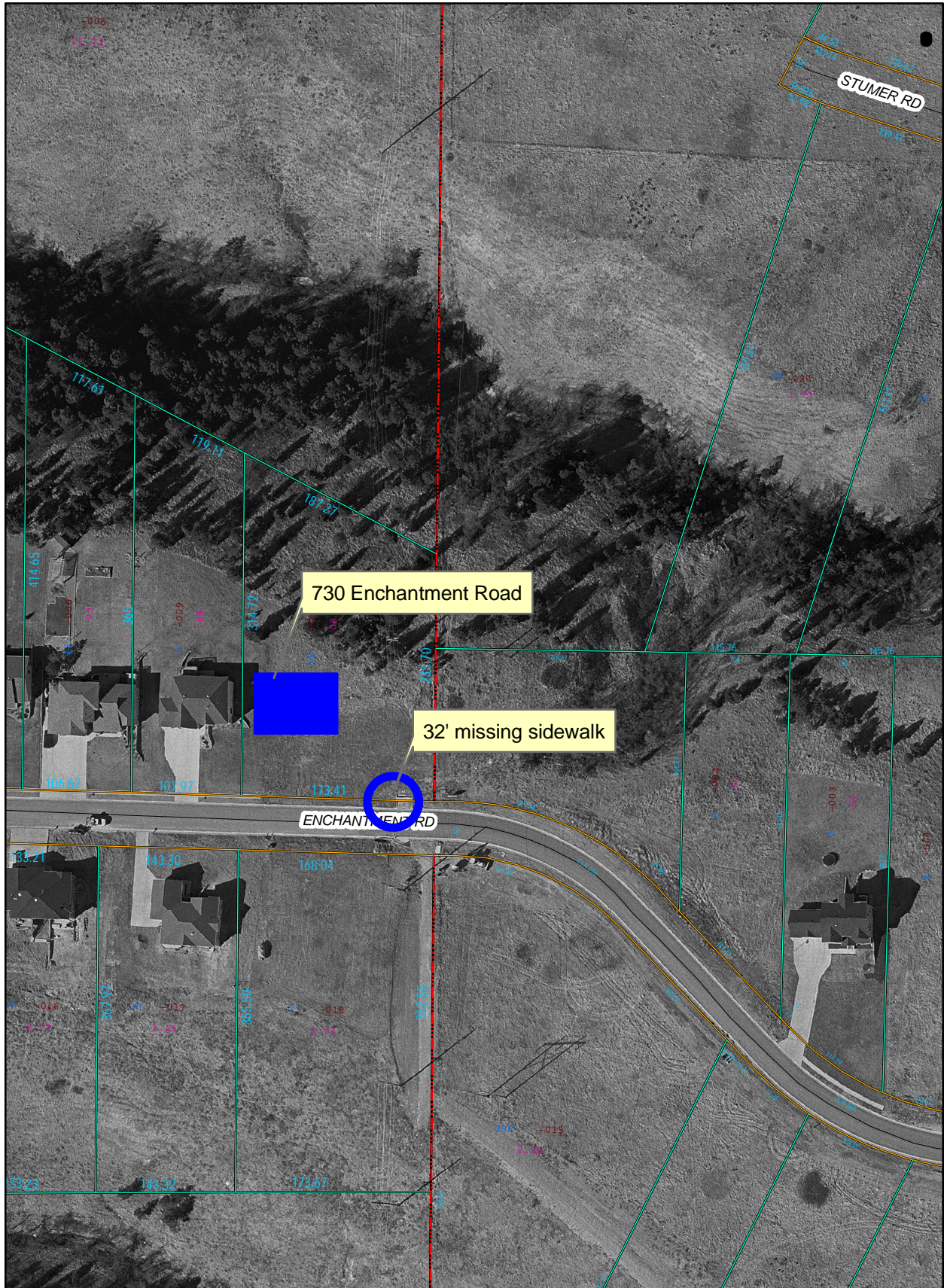
At the request of the complainant, Engineering Services requests that the City Council consider ordering in sidewalk at this location

Please see the attached vicinity map.

Cc: Dirk Jablonski – Public Works Director  
1542 file



EQUAL OPPORTUNITY EMPLOYER



730 ENCHANTMENT DRIVE VICINITY MAP